

IMD  
1997-2000  
가 가

			1997 3-30. ( '88-'94)(%. GDP )	
			8.9	15
			13.3	20
			.	.
			.	.
			.	.
			5.6	9
			5.1	6
			7.1	10
			40.0	28
			.	.
			.	.
			8.4	14
			0.6	1
			.	.
			2.8	4
			9.7	16
			.	.
			.	.
			.	.
가			.	.
			2.2	3
			.	.
			.	.
			1.9	2
			13.9	22
			.	.
			5.6	8
			13.6	21
			13.0	19
			.	.
			34.0	26
			25.0	24
			8.0	13
			.	.
			7.2	11
			5.4	7
			7.2	11
			40.0	27
			14.2	23
			10.0	17
			.	.
			3.0	5
가			10.3	18
			30.0	25
			.	.
			.	.

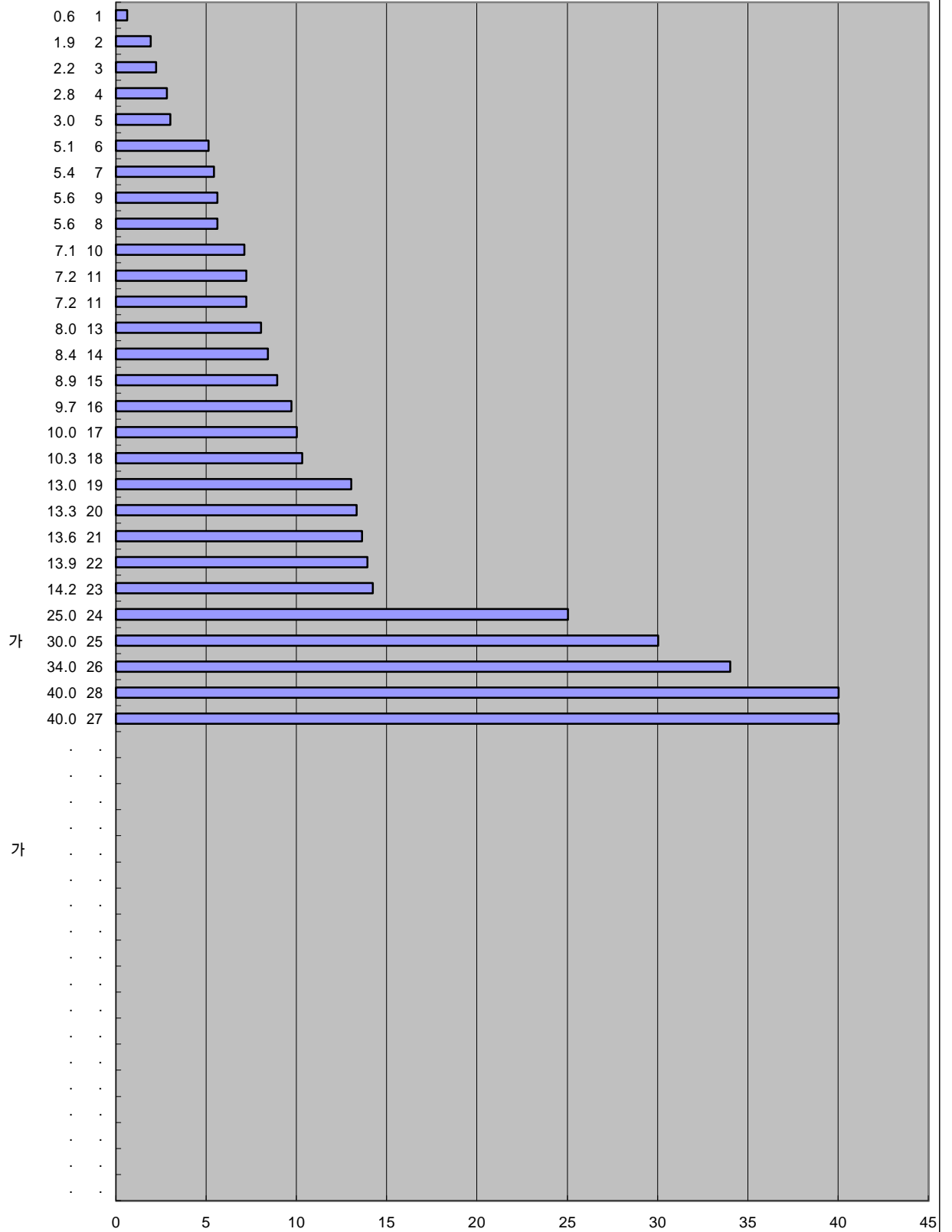
IMD 가

1997

가 가

3-30.

('88-'94)(%, GDP )



가

가