

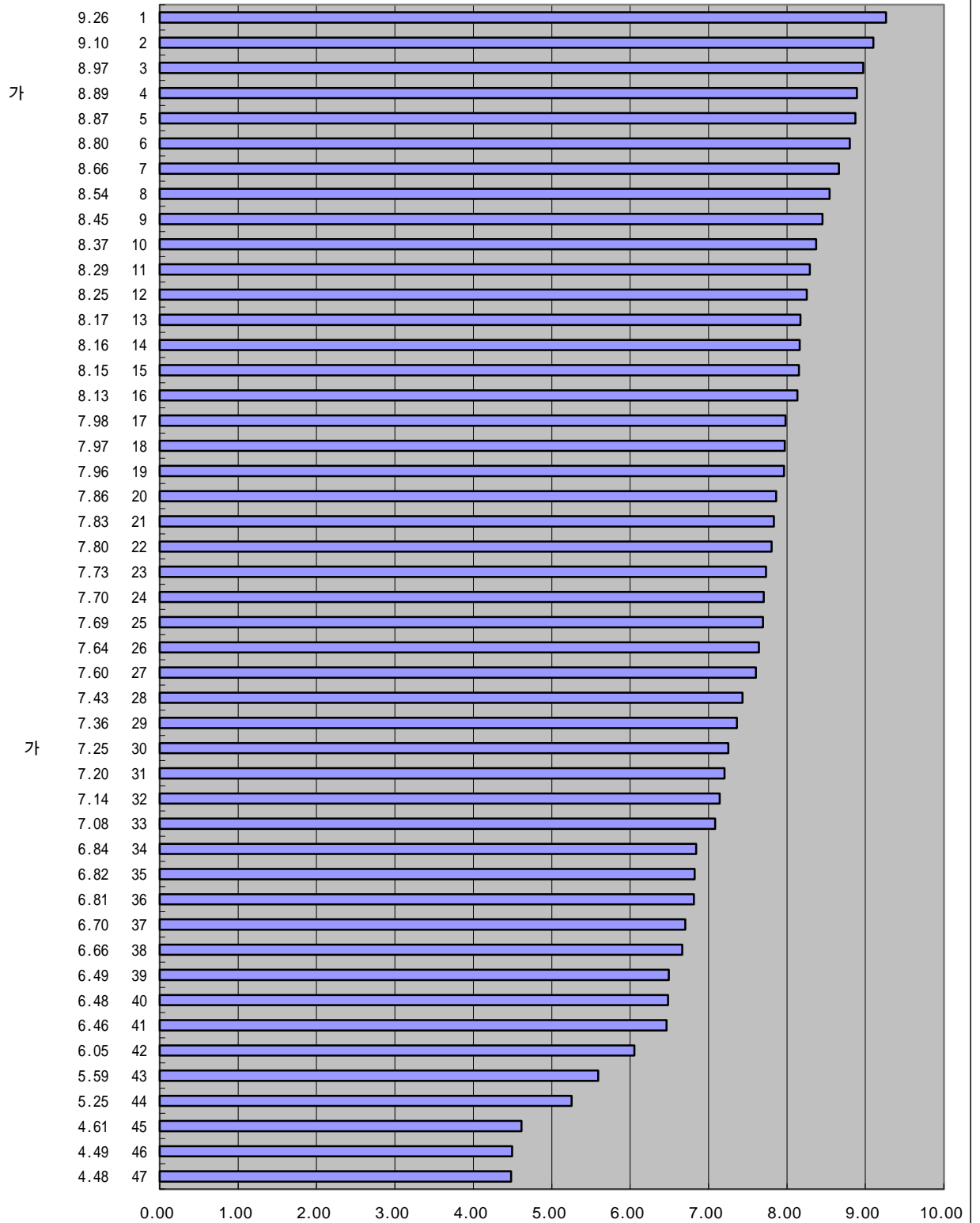
IMD 가
1997-2000
가 가

	2000 8-40.		1999 8-41.		1998 8-41.		1997 8-37.	
	2000 (1-10)		1999 (1-10)		1998 (1-10)		1997 (1-10)	
	8.16	14	7.83	20	8.55	9	9.04	7
	4.61	45	3.53	47	4.68	46	4.30	46
	8.17	13	7.98	17	8.29	14	8.61	12
	8.87	5	9.01	2	9.15	1	9.26	3
	7.96	19	8.08	15	8.04	21	8.11	25
	7.60	27	7.53	29	6.92	42	7.23	35
	9.10	2	8.99	3	8.95	3	8.77	8
	8.66	7	8.26	12	8.10	20	8.22	20
	5.25	44	5.54	42	6.03	44	5.27	45
	8.15	15	8.33	10	8.44	11	8.36	17
	7.14	32	7.57	28	7.85	23	8.13	24
	6.81	36	6.14	41	7.25	34	7.00	38
	6.70	37	6.48	39	7.00	39	6.98	39
	6.48	40	6.70	36	7.14	36	7.04	37
	7.98	17	7.82	22	7.82	24	8.38	16
	6.46	41	6.56	37	7.06	38	6.65	41
	8.37	10	8.62	6	8.91	4	8.20	21
	8.45	9	8.37	7	8.41	12	8.74	9
	7.80	22	8.26	13	7.55	28	8.60	13
	6.05	42	5.43	44
가	8.89	4	8.30	11	8.72	7	9.05	6
	6.84	34	6.55	38	6.95	41	7.95	27
	8.80	6	8.63	5	8.97	2	9.31	2
	7.97	18	7.82	21	8.18	19	8.56	14
	7.20	31	7.03	32	7.76	26	8.17	23
	8.97	3	8.96	4	8.78	6	9.05	5
	8.54	8	7.75	23	8.55	8	8.72	10
	7.36	29	7.60	27	8.28	15	7.52	32
	6.66	38	6.85	34	7.70	27	6.56	43
	4.49	46	5.49	43	7.51	29	7.40	34
	7.64	26	7.74	25	7.77	25	8.26	19
	6.82	35	7.14	31	7.22	35	7.20	36
	7.86	20	7.89	18	7.26	33	8.46	15
	7.73	23	7.71	26	7.51	30	7.84	29
	8.29	11	8.03	16	8.53	10	8.00	26
	4.48	47	4.58	46	5.56	45	5.43	44
	7.08	33	6.78	35	7.07	37	6.61	42
	8.13	16	8.36	8	8.23	18	9.10	4
	5.59	43	5.14	45	6.07	43	8.20	21
	7.70	24	8.17	14	7.97	22	7.51	33
	7.69	25	7.74	24	8.31	13	7.91	28
	9.26	1	9.06	1	8.86	5	9.41	1
	6.49	39	6.32	40	6.99	40	6.78	40
	7.43	28	6.87	33	7.26	32	8.62	11
가	7.25	30	7.84	19	7.40	31	7.77	30
	7.83	21	7.45	30	8.27	16	7.74	31
	8.25	12	8.35	9	8.24	17	8.30	18

IMD 가
2000 가
가

8-40.

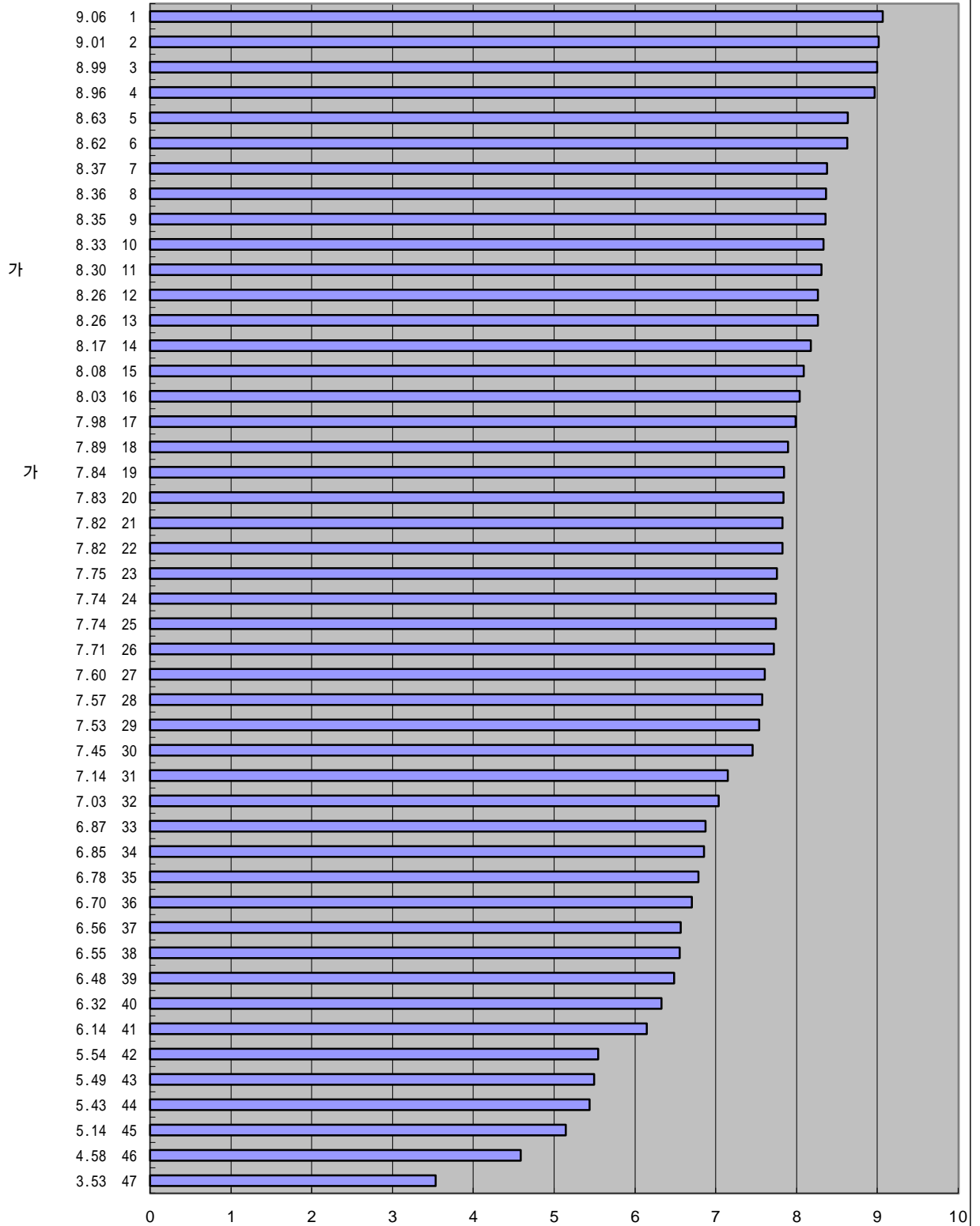
2000 , (1-10)



IMD 가
1999 가
가

8-41.

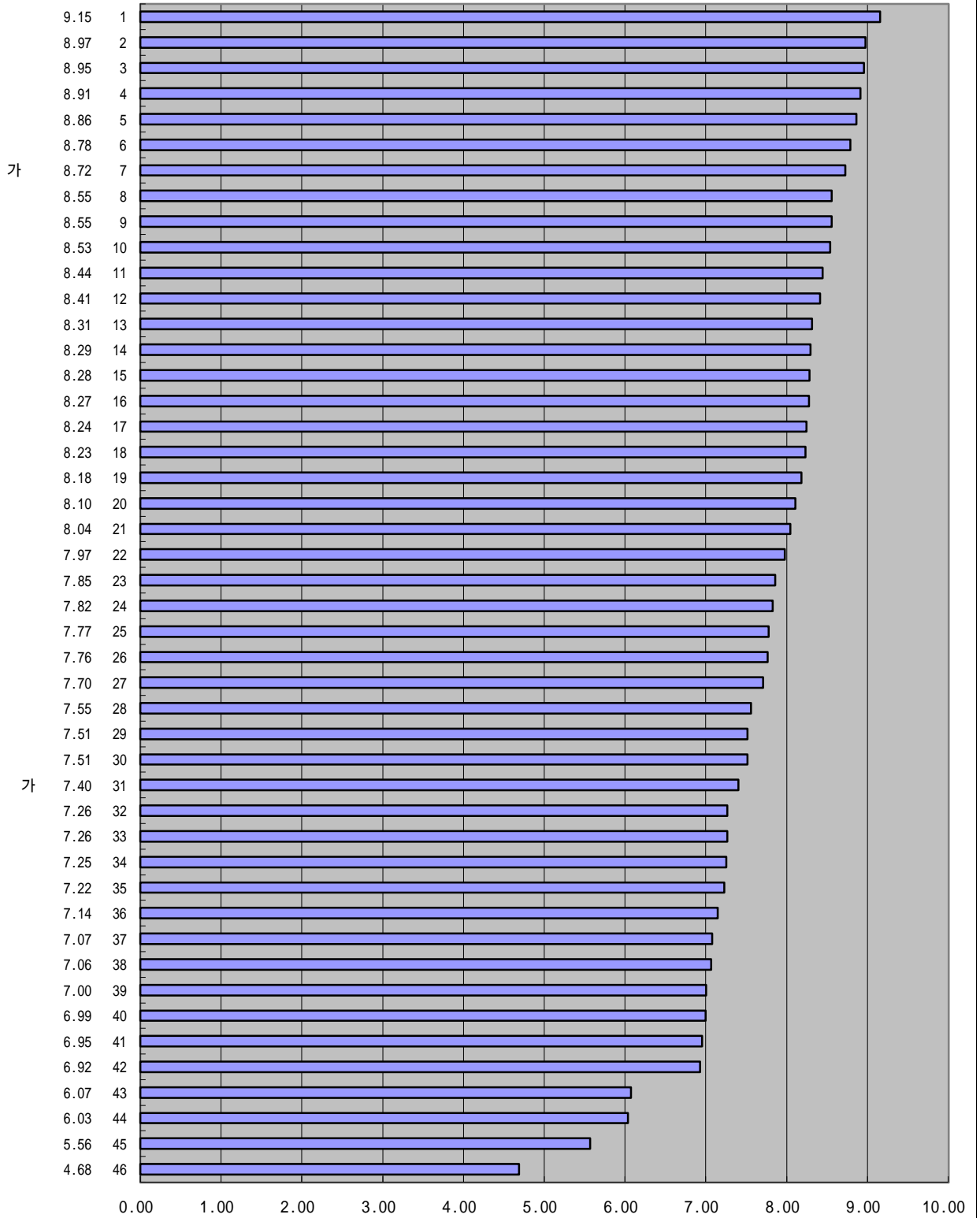
1999 , (1-10)



IMD 가
1998 가
가

8-41.

1998 , (1-10)



:

(IMD), 1998

(1998.4.15)

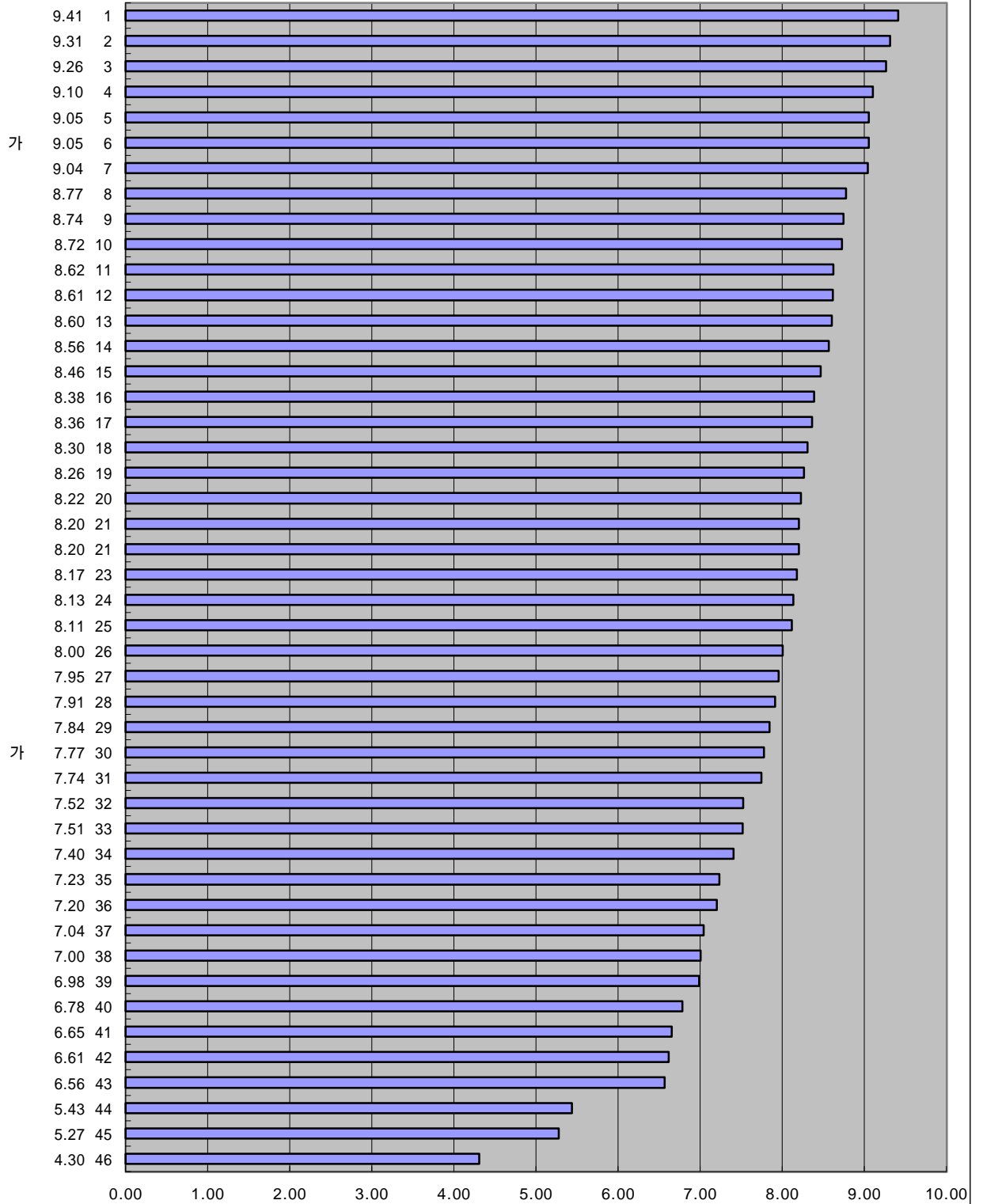
IMD 가

1997

가 가

8-37.

1997 , 1-10



:

(IMD), 1997

(1997.3.25)