

IMD 가
1997-2000
가 가

	2000 8-14. ('99) ()		1999 8-14. ('98) ()		1998 8-14. ('97) ()		1997 8-12. ('96) ()	
	21.3	9	21.3	8	21.3	7	21.3	8
	8.6	22	11.8	19	11.8	16	13.6	14
	4.1	37	4.1	39	4.1	38	4.1	36
	4.5	35	4.9	35	4.9	34	4.3	34
	9.4	20	8.2	24	8.5	22	9.5	19
	8.3	23	8.8	22	9.6	18	10.1	16
	5.2	31	5.2	32	5.2	31	5.2	30
	2.9	39	2.9	41	3.3	39	3.3	37
	18.3	12	18.3	12	18.3	11	7.9	23
	2.9	40	2.9	42	2.9	40	2.9	38
	26.4	8	16.8	13	16.8	12	16.8	10
	17.3	13	19.3	9	21.2	8	27.1	6
	2.6	43	3.0	40	2.9	41	2.9	40
	14.4	15	10.1	20	9.4	19	14.0	12
	2.6	41	2.6	43	2.6	43	2.6	41
	26.4	7	45.0	3	25.0	6	26.6	7
	2.6	42	2.6	44	2.8	42	2.9	39
	4.6	34	4.7	36	4.7	35	4.5	33
	7.5	26	7.7	26	8.1	24	8.7	21
	12.0	18	12.1	18
가	0.3	46	0.3	46	0.3	46	0.3	46
	8.1	24	8.9	21	8.9	20	8.9	20
	8.6	21	8.3	23	8.6	21	9.8	17
	13.7	16	13.7	15	13.7	15	13.7	13
	1.7	45	1.7	45	1.9	44	2.0	43
	6.6	27	6.8	27	7.5	26	7.5	25
	2.3	44	5.0	33	5.0	33	2.5	42
	5.6	29	6.5	29	7.0	27	7.0	26
	60.1	1	60.1	1	5.5	30	5.5	28
	42.9	5	41.2	6	68.0	1	47.3	3
	5.2	32	5.7	30	5.9	29	5.5	29
	49.8	2	49.9	2	52.9	2	52.9	2
	5.2	30	5.5	31	6.0	28	6.0	27
	14.8	14	14.1	14	14.3	13	16.0	11
	3.5	38	4.1	38	4.1	37	4.1	35
	19.0	10	19.0	11	19.0	10	1.5	44
	48.5	3	43.7	5	50.2	3	55.7	1
	43.0	4	45.0	4	45.0	4	44.9	4
	19.0	11	19.3	10	21.1	9	21.3	9
	12.7	17	13.4	16	14.0	14	12.3	15
	4.2	36	4.3	37	4.6	36	4.6	32
	6.3	28	6.6	28	7.7	25	7.7	24
	40.5	6	39.9	7	40.4	5	42.8	5
가	11.7	19	13.2	17	10.8	17	9.8	18
	7.7	25	8.0	25	8.3	23	8.2	22
	4.9	33	4.9	34	5.0	32	5.1	31
	0.0	47	0.0	47	0.6	45	0.6	45

IMD 가

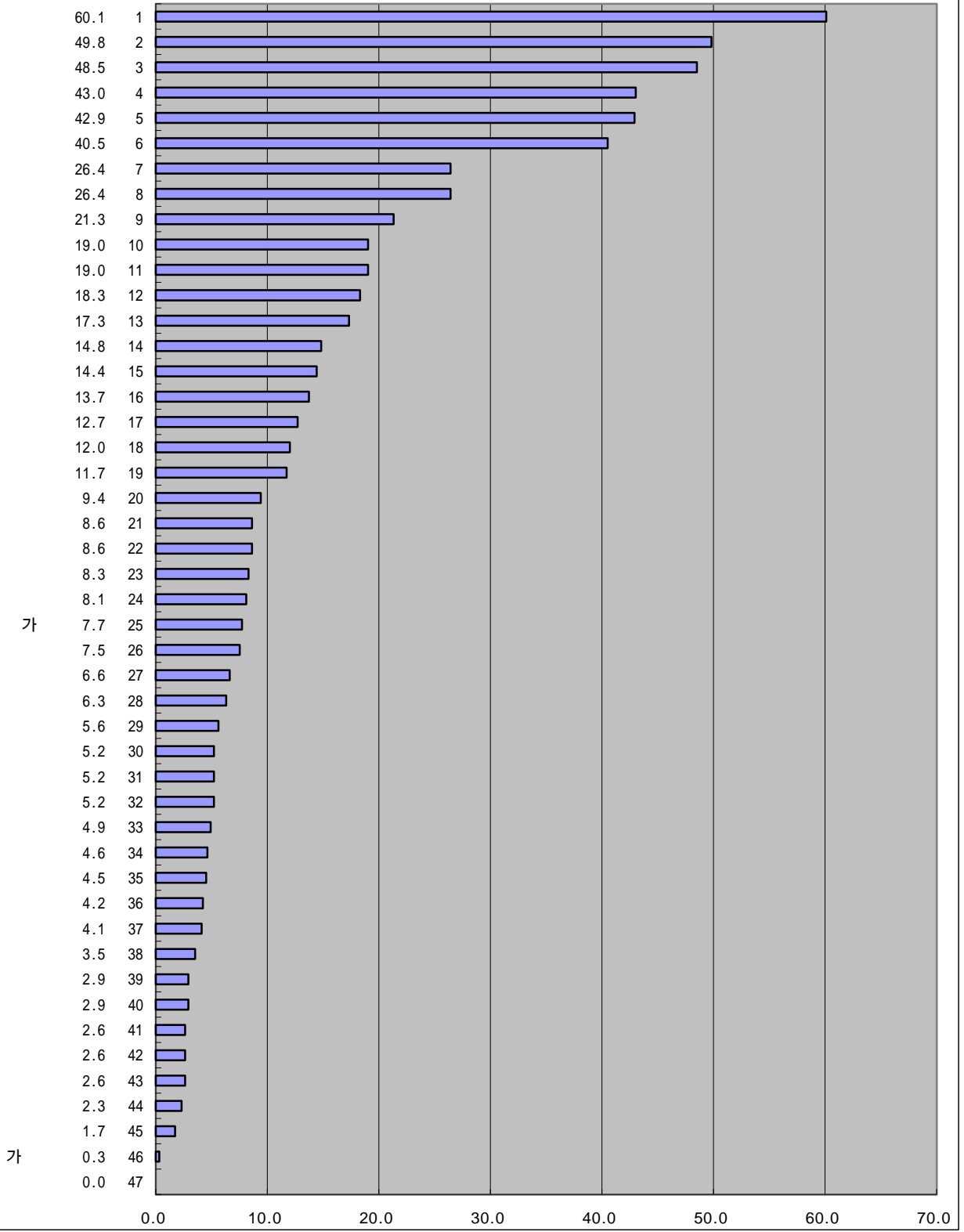
2000

가 가

8-14(a).

('99)(%)

()



가

가

IMD 가

1999

가

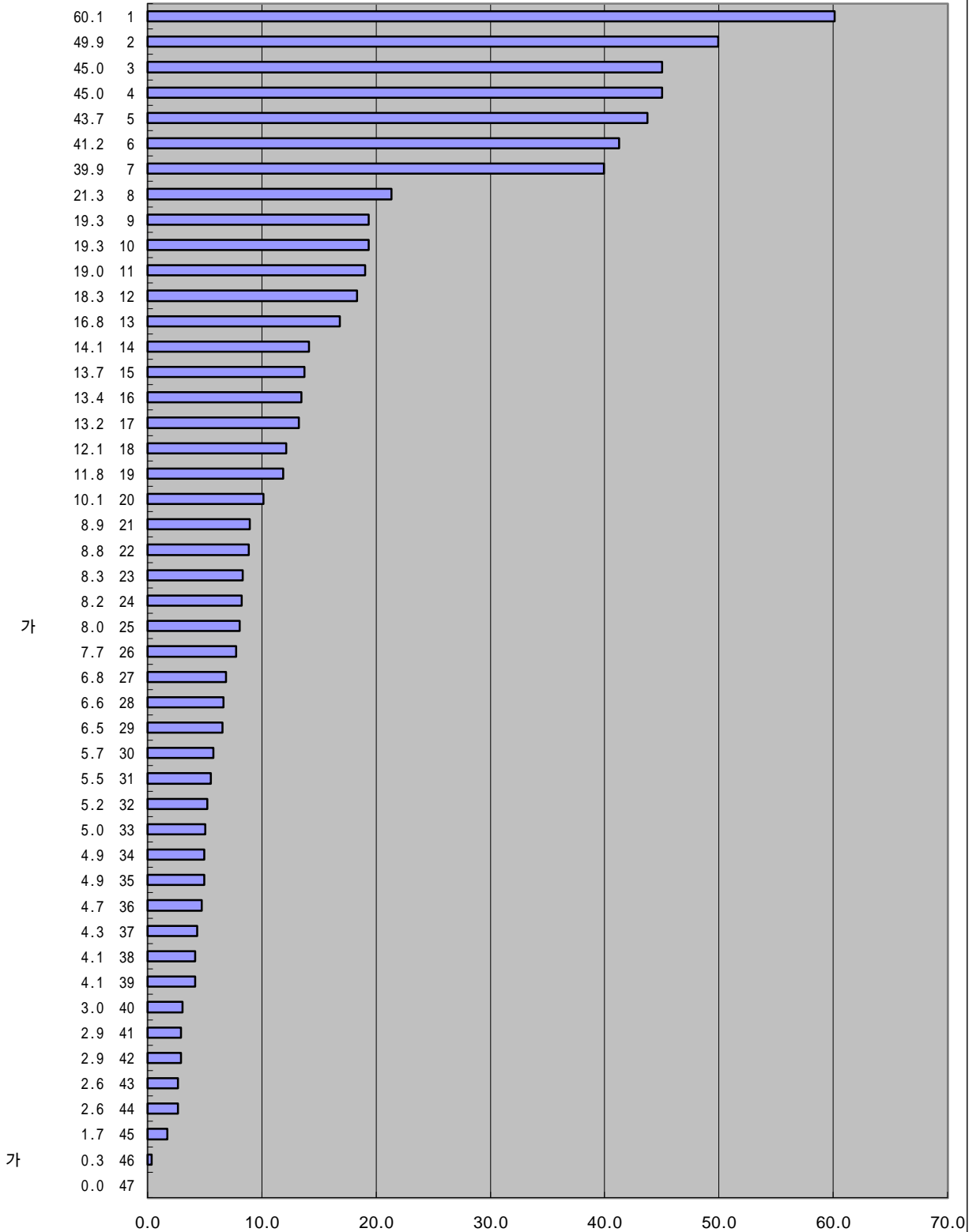
가

8-14(a).

-

('98)(%)

()



가

가

IMD 가

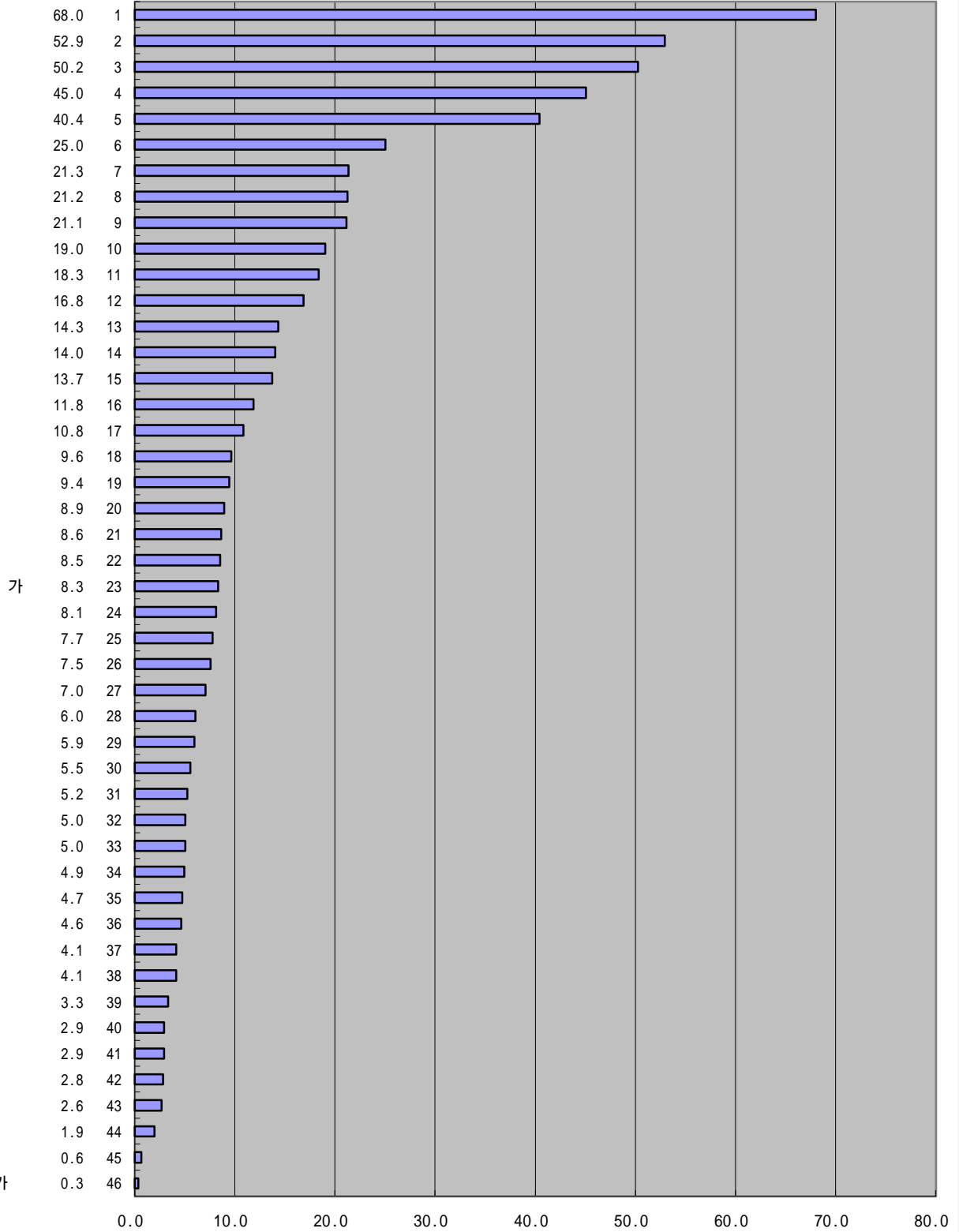
1998

가 가

8-14(a).

('97)(%)

()



IMD 가

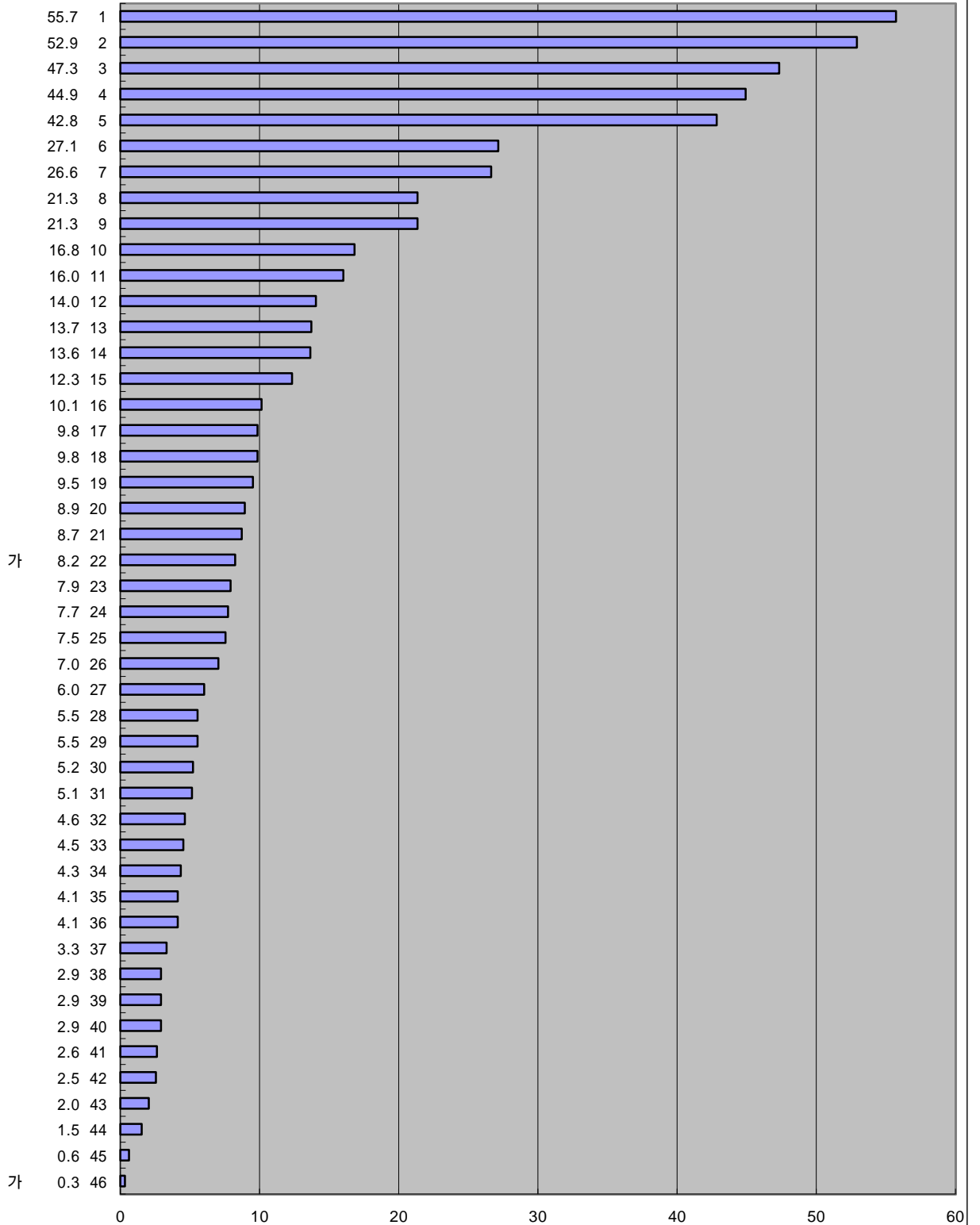
1997

가 가

8-12(a).

('96)(%)

()



가

가

:

(IMD), 1997

(1997.3.25)