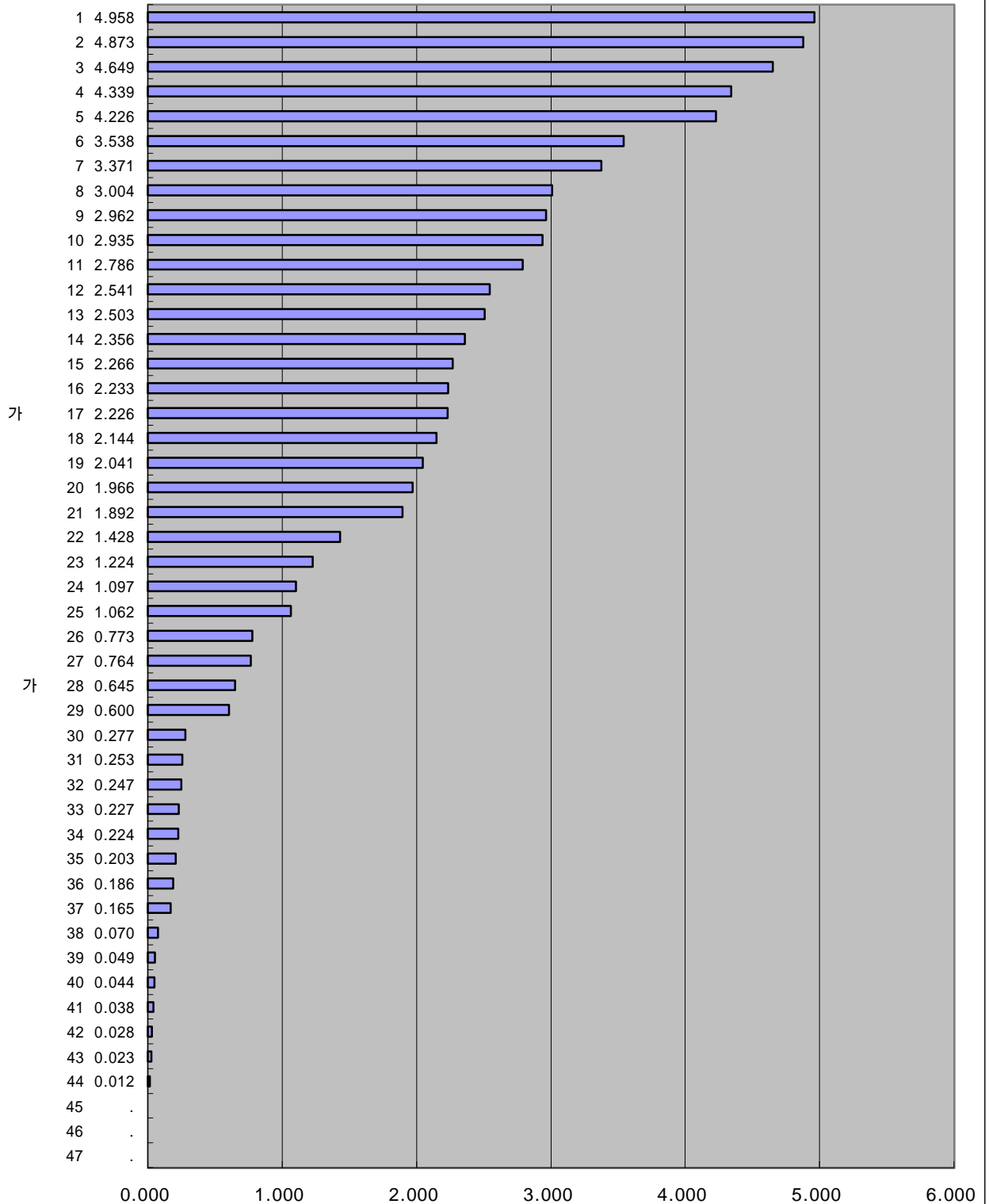


IMD 가
1997-2000
가 가

	2000 7-9. 1		1999 7-9. 1			
	('98)(,)		('97)(,)			
	3.538	6	0.277	30		
	0.224	34	0.212	33		
	0.049	39	2.541	12		
	0.773	26	2.773	11		
	2.541	12	0.799	26		
	3.004	8	3.010	8		
	1.097	24	3.371	7		
	2.786	11	3.556	6		
	4.226	5	4.226	4		
	1.966	20	.	.		
	.	.	0.108	36		
	0.165	37	0.047	39		
	2.962	9	2.962	9		
		
	0.203	35	2.266	15		
	2.266	15	0.043	40		
	4.958	1	4.715	2		
	4.873	2	4.873	1		
	0.764	27	0.792	27		
	2.041	19	2.041	18		
가	2.226	17	2.121	17		
	0.253	31	0.074	37		
	0.645	28	2.144	16		
	0.186	36	1.718	21		
	2.356	14	2.364	14		
	1.892	21	1.892	20		
	2.233	16	1.224	23		
	1.224	23	1.055	25		
	2.144	18	0.040	41		
	0.038	41	0.186	34		
	1.062	25	4.687	3		
	.	.	0.257	31		
	0.227	33	1.113	24		
	2.503	13	0.028	42		
	0.044	40	2.503	13		
	0.247	32	0.250	32		
	0.012	44	0.013	44		
	0.070	38	0.068	38		
	0.023	43	0.609	29		
	0.600	29	0.178	35		
	4.339	4	2.786	10		
	3.371	7	4.054	5		
	2.935	10	0.026	43		
	4.649	3	1.954	19		
가	0.277	30	0.645	28		
	1.428	22	1.428	22		
	0.028	42	.	.		

IMD 가 2000 가 가 가

7-9. 1
('98) (,)



IMD 가

1999

가 가

7-9. 1

('97)(,)

