

가

IMD 가
1997-2000
가 가

	2000 6-27. ('95-'97) (,)		1999 6-28. ('95-'97) (,)		1998 6-27. ('94-'95) (,)		1997 6-25. ('93-'95) (,)	
	54.10	39	51.05	41	86.918	40	86.92	39
	99.95	42	33.05	36	33.052	34	33.05	34
	15.31	27	15.32	28	16.100	25	16.99	25
	44.61	38	44.61	40	51.832	37	13.99	23
	13.25	25	13.57	26	15.510	24	11.01	21
	0.78	8	0.78	9	0.773	10	0.74	7
	23.60	31	23.60	32	22.309	29	24.71	29
	1.41	11	1.41	12	2.347	12	4.38	11
	13.81	26	13.81	27	13.806	23	5.31	13
	0.00	2	0.00	2	0.002	2	.	.
	0.15	3	0.15	4	0.212	5	0.29	4
	9.03	21	8.70	21	11.863	22	16.18	24
	19.04	29	19.04	30	19.908	27	18.90	26
	3.08	13	3.09	14
	10.46	22	10.46	23	7.473	17	7.47	15
	4.81	14	4.81	15	4.810	13	4.81	12
	26.85	33	26.86	34	28.017	31	33.02	33
	0.38	5	0.38	6	0.703	8	0.70	6
	41.37	37	41.37	39	79.176	39	84.08	38
가	8.81	20	8.81	22
	0.00	1	0.00	1	0.000	1	0.00	1
	.	.	221.66	45	221.664	43	221.66	42
	312.31	44	312.31	46	331.666	44	392.99	43
	25.04	32	25.09	33	25.163	30	20.25	27
	11.07	23	11.09	24	11.396	21	7.68	16
	0.83	9	0.83	10	0.005	3	0.55	5
	165.88	43	165.88	44	165.877	42	178.46	41
	36.15	35	36.17	37	36.212	36	44.88	36
	18.32	28	18.19	29	18.586	26	25.14	30
	8.53	18	8.55	19	5.897	14	5.90	14
	0.55	6	0.55	7	0.743	9	1.16	9

	0.69	7	0.69	8	0.694	7	0.17	3
	19.11	30	19.11	31	33.778	35	33.78	35
	95.44	41	95.17	43	73.522	38	53.43	37
	.	.	0.07	3	0.073	4	0.07	2
	2.57	12	2.57	13	2.208	11	2.37	10
	29.21	34	28.87	35	28.975	32	30.96	31
	1.37	10	1.37	11	5.988	15	10.37	20
	6.57	15	6.60	16	7.140	16	12.36	22
	8.04	16	8.04	17	8.044	18	8.04	17
	64.62	40	64.62	42	92.376	41	92.50	40
	8.23	17	8.23	18	9.042	19	9.04	18
가	12.66	24	12.69	25	20.543	28	23.88	28
	8.60	19	8.60	20	9.443	20	9.50	19
	36.62	36	36.62	38	31.455	33	31.45	32
	0.24	4	0.24	5	0.220	6	0.97	8

:

(IMD),

(1997, 1998, 1999, 2000)

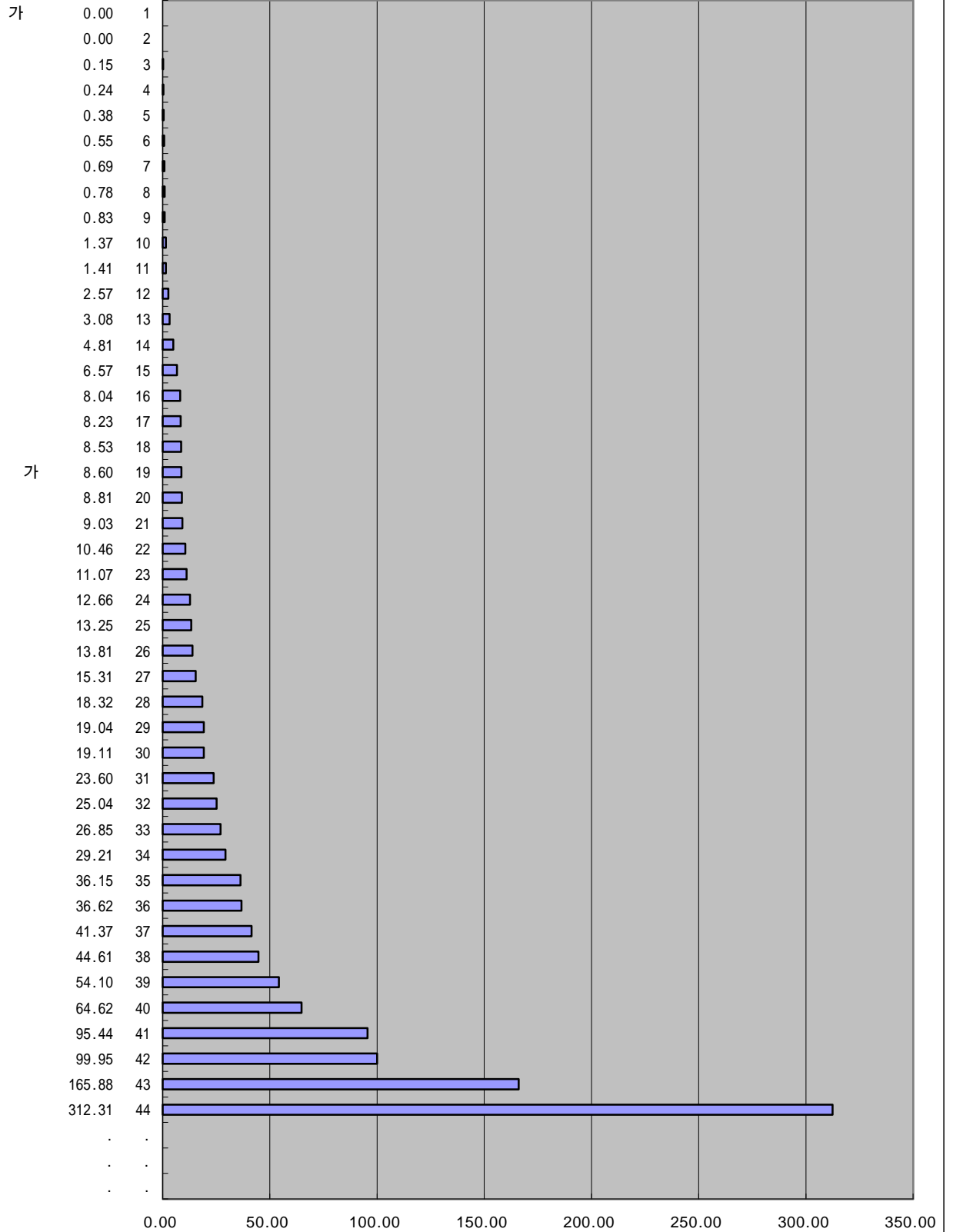
IMD 가

2000

가 가

6-27.

('95-'97)(,)



:

(IMD), 2000

(2000.4.19)

IMD 가

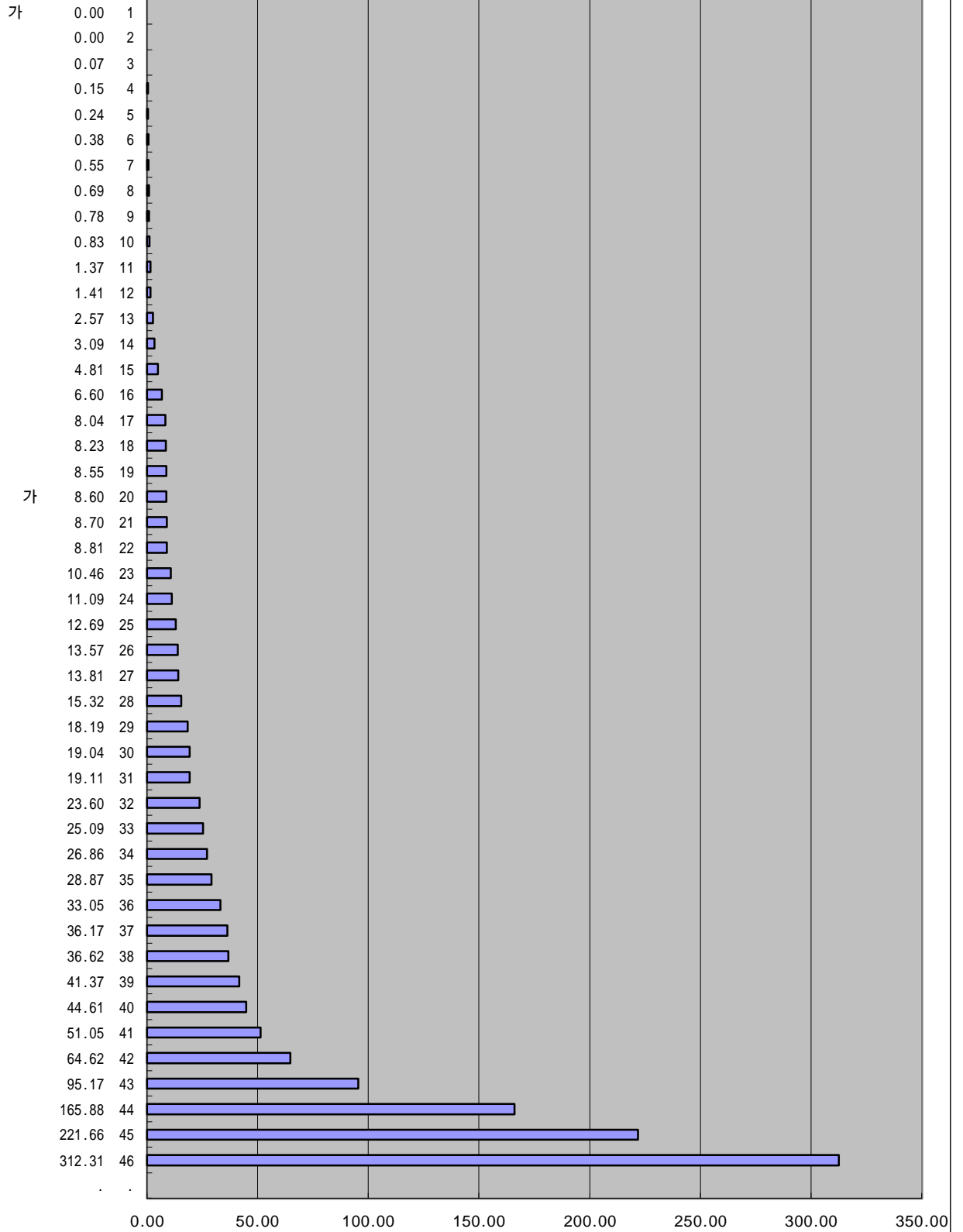
1999

가

가

6-28.

('95-'97)(,)



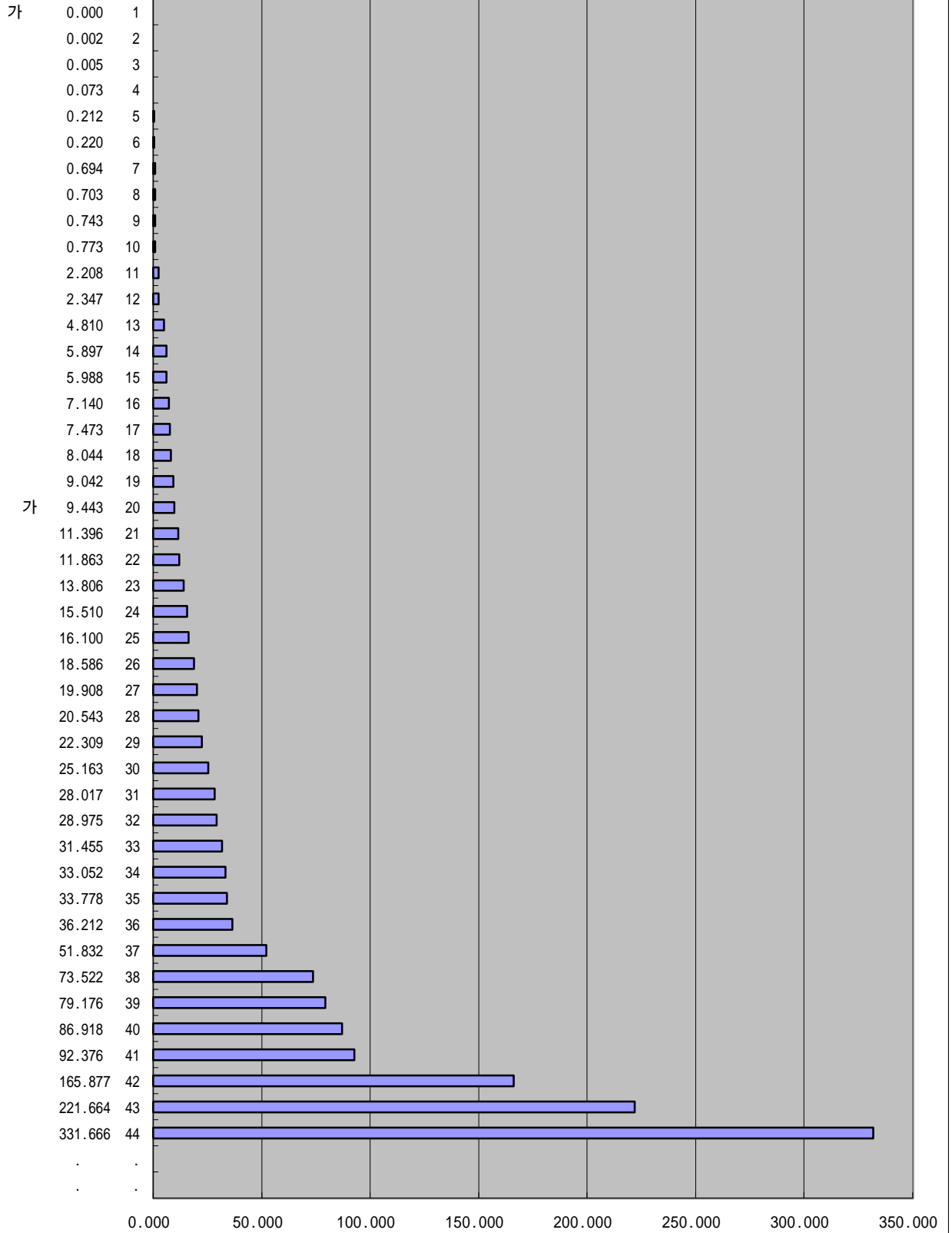
IMD 가

1998

가 가

6-27.

('94-'96)(,)



IMD 가

1997

가 가

6-25.

('93-'95,)(, 1)

