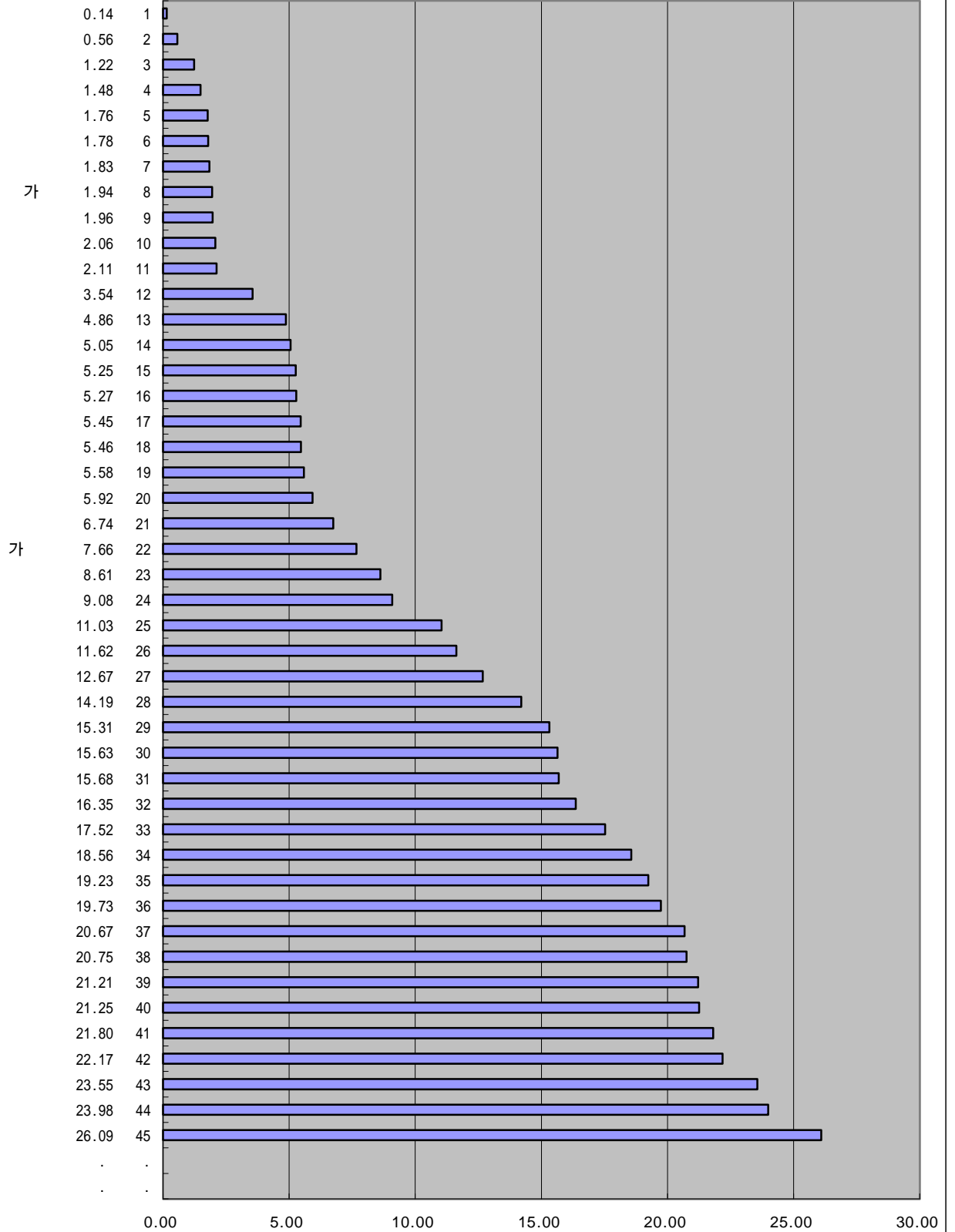


가

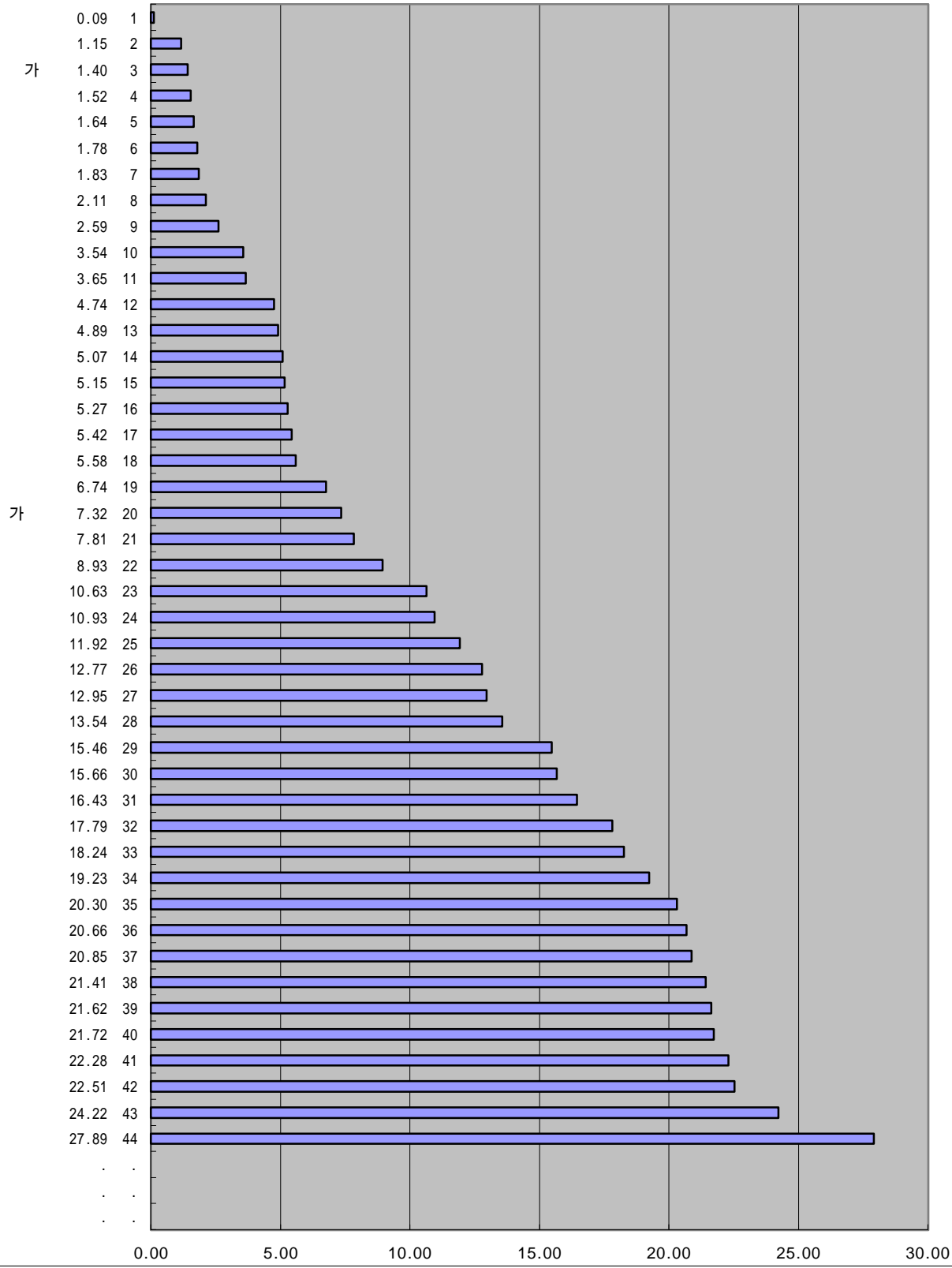
IMD 가  
1997-2000  
가 가

	2000 6-12. ( '99 )(\$)		1999 6-13. ( '98 )(\$)		1998 6-13. ( '97 )(\$)		1997 6-7. ( '96 )(\$)	
	( )	( )	( )	( )	( )	( )	( )	( )
	8.61	23	7.81	21	8.08	24	8.61	22
	5.27	16	5.27	16	3.85	17	4.17	15
	19.73	36	20.30	35	17.53	35	23.01	37
	23.98	44	22.28	41	21.59	44	23.95	41
	9.08	24	8.93	22	9.28	25	10.60	24
	5.45	17	5.07	14	5.57	22	5.62	19
	21.80	41	21.72	40	20.33	40	23.36	38
	26.09	45	27.89	44	26.40	46	30.33	45
	1.22	3	1.15	2	0.98	9	1.13	5
	19.23	35	19.23	34	18.63	38	20.06	34
	1.96	9	2.59	9	0.90	8	1.53	9
	1.76	5	1.52	4	1.39	13	1.27	6
	18.56	34	18.24	33	17.70	36	17.20	31
	1.48	4	3.65	11	0.24	4	1.34	7
	22.17	42	22.51	42	21.40	43	25.58	43
	6.74	21	6.74	19	2.26	15	2.53	13
	21.21	39	21.41	38	20.57	41	22.74	36
	23.55	43	24.22	43	23.74	45	27.98	44
	11.62	26	11.92	25	11.02	27	12.49	26
	5.05	14	10.63	23	.	.	.	.
가	7.66	22	7.32	20	6.69	23	7.32	21
	5.58	19	5.58	18	3.69	16	3.69	14
	14.19	28	12.95	27	11.13	28	12.17	25
	12.67	27	12.77	26	12.19	29	13.79	28
	15.63	30	15.66	30	14.80	31	13.63	27
	21.25	40	21.62	39	20.68	42	24.17	42
	11.03	25	10.93	24	10.23	26	9.99	23
	16.35	32	16.43	31	15.09	32	17.40	32
	0.56	2	.	.	0.23	3	0.32	3
	0.14	1	0.09	1	0.06	1	0.25	1
	20.75	38	20.66	36	17.51	34	20.44	35
	2.11	11	2.11	8	0.27	5	0.39	4
	2.06	10	1.64	5	1.26	12	1.64	11
	4.86	13	4.74	12	4.84	20	5.15	17
	15.68	31	15.46	29	15.78	33	16.13	30
	3.54	12	3.54	10	0.17	2	0.27	2
	.	47	.	.	0.76	7	1.61	10
	1.83	7	1.83	7	0.53	6	23.89	40
	.	46	.	.	1.07	11	2.09	12
	5.25	15	5.15	15	4.63	19	5.20	18
	17.52	33	17.79	32	17.82	37	18.85	33
	20.67	37	20.85	37	19.70	39	23.60	39
	1.78	6	1.78	6	1.70	14	.	.
가	5.92	20	4.89	13	3.87	18	7.10	20
	1.94	8	1.40	3	1.04	10	1.40	8
	15.31	29	13.54	28	13.95	30	15.22	29
	5.46	18	5.42	17	5.13	21	4.82	16

IMD 가  
 2000 가  
 6-12.  
 ('99)(\$, )



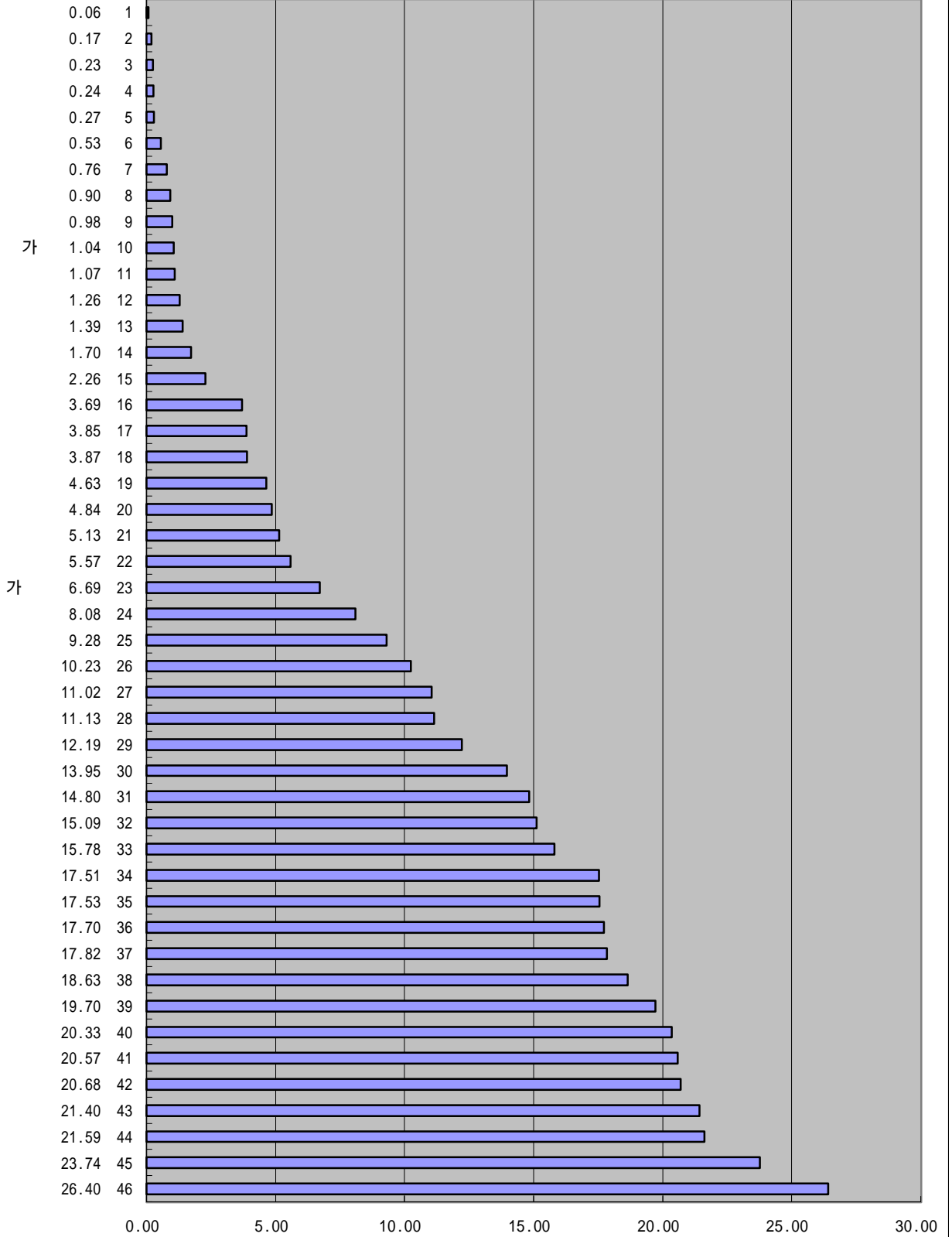
IMD 가  
 1999 가  
 6-13.  
 ('98)(%, )



IMD 가  
1998 가  
가

6-13.

('97)(\$, )



IMD 가

1997

가 가

6-7.

('96)(\$, )

