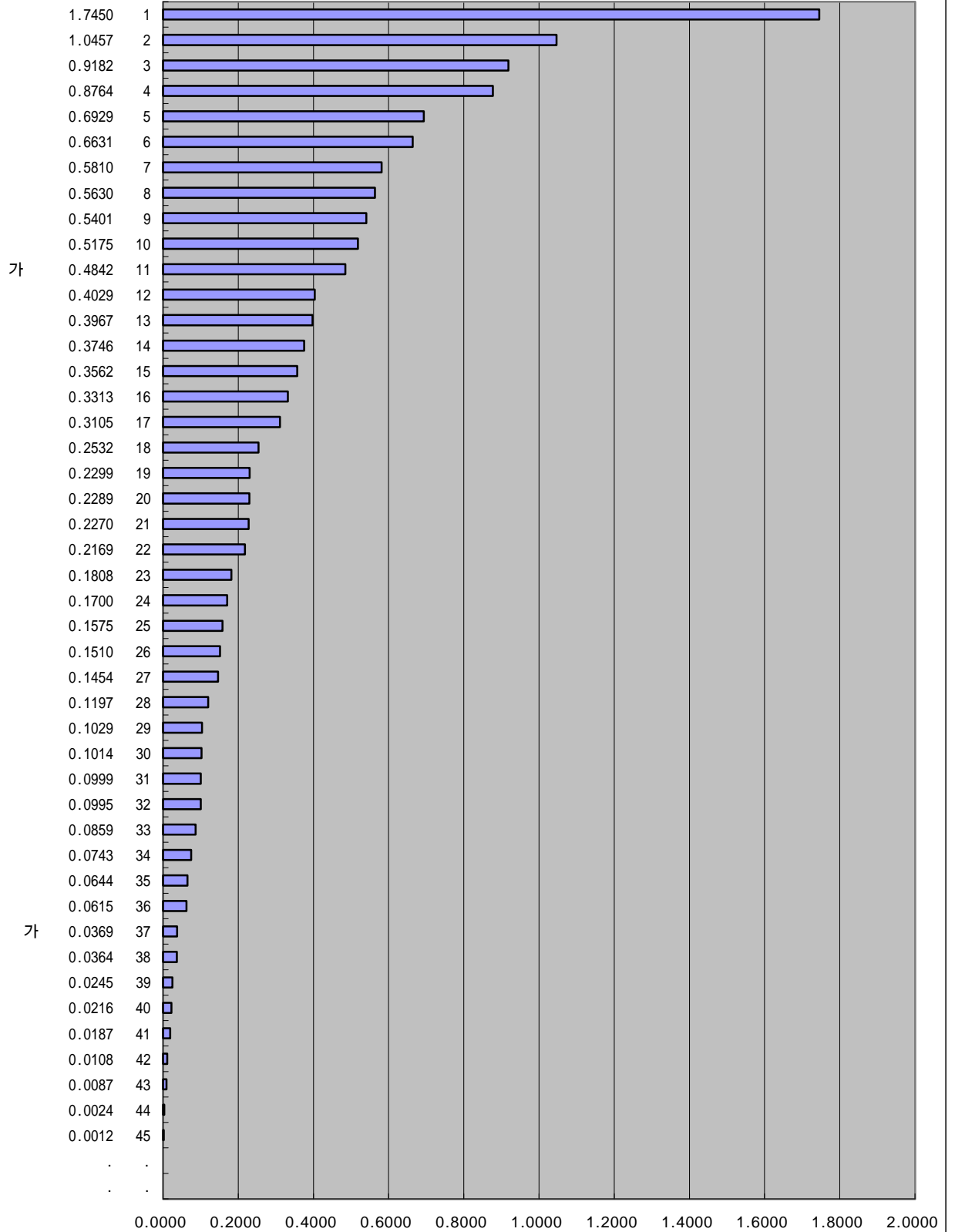


IMD 가
1997-2000
가 가

	2000		1999			
	4-26. ('98)(,)		4-26. ('98)(,)			
	0.0995	32	99.1	32		
	0.0364	38	34.6	38		
	0.2169	22	217.2	22		
	0.4029	12	402.0	12		
	0.5401	9	516.9	10		
	0.3967	13	396.7	13		
	0.2270	21	227.0	21		
	0.1510	26	150.6	26		
	0.0012	45	1.2	45		
	0.5810	7	581.0	7		
	0.1029	29	99.5	31		
	0.0743	34	74.0	34		
	1.7450	1	1745.4	1		
	0.1014	30	102.2	29		
	0.2299	19	229.6	19		
	0.0999	31	99.8	30		
	0.3746	14	374.2	14		
	0.3313	16	330.8	16		
	0.3105	17	310.5	17		
	0.0859	33	85.4	33		
가	0.4842	11	483.7	11		
	0.2289	20	228.9	20		
	0.5630	8	556.8	8		
	0.2532	18	253.9	18		
	0.8764	4	868.0	4		
	0.1454	27	145.4	27		
		
	0.1197	28	119.6	28		
	0.0024	44	2.4	44		
	0.0108	42	10.7	42		
	0.6929	5	697.9	5		
		
	0.0245	39	24.5	39		
	0.1700	24	170.0	24		
	1.0457	2	1044.6	2		
	0.0615	36	69.1	35		
	0.0216	40	21.6	40		
	0.0644	35	63.0	36		
	0.0087	43	8.7	43		
	0.1575	25	158.7	25		
	0.3562	15	356.2	15		
	0.1808	23	180.4	23		
	0.0187	41	18.7	41		
	0.6631	6	662.9	6		
가	0.0369	37	36.9	37		
	0.5175	10	517.4	9		
	0.9182	3	917.6	3		

IMD 가
2000 가
가

4-26.
('98)(,)



IMD 1999 가

4-26. ('98)(,)

