

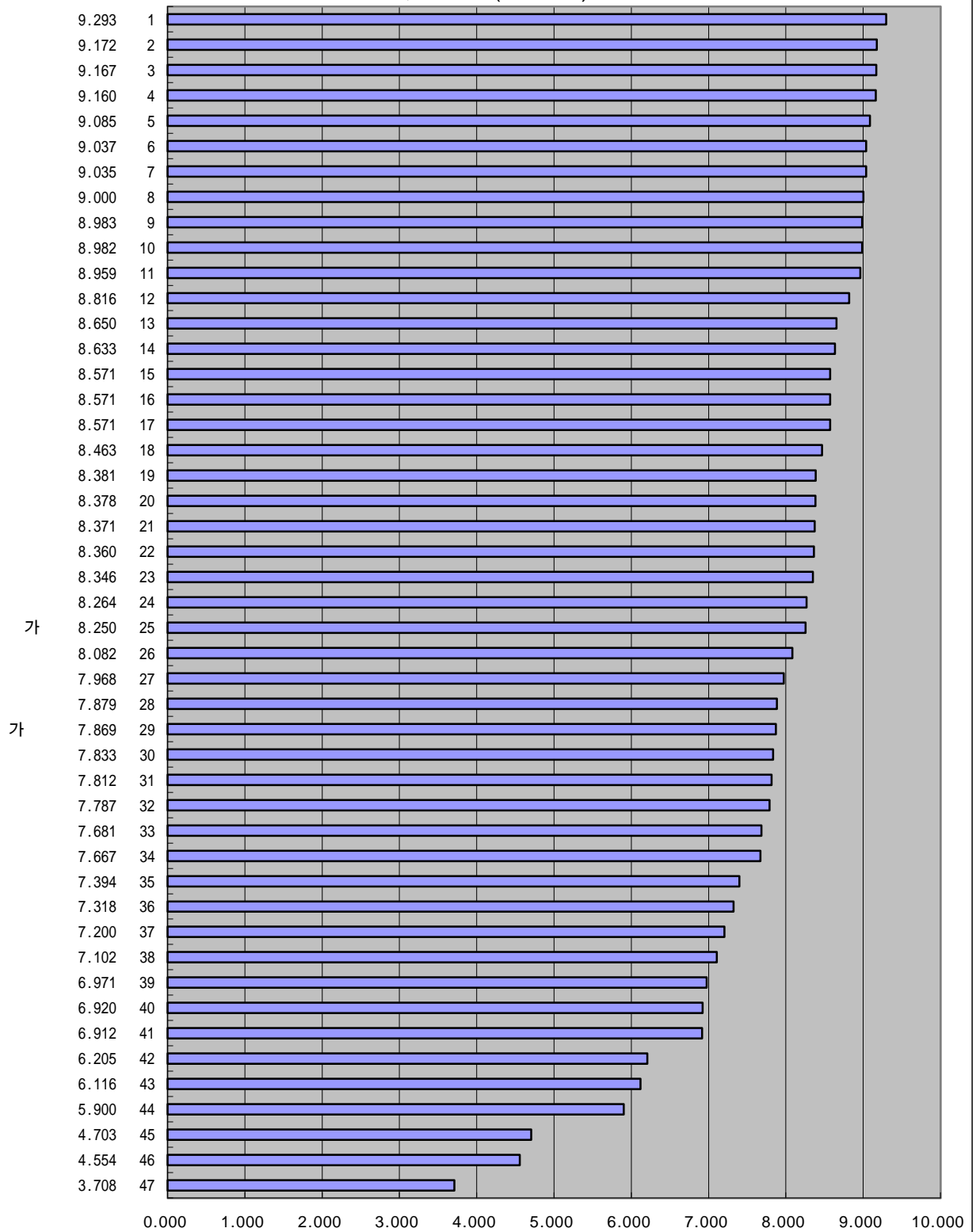
IMD 가
1997-2000
가 가

	2000 4-7. 2000 , (1-10)		1999 4-7. 1999 , (1-10)		1998 4-5. 1998 , (1-10)		1997 4-5. 1997 , (1-10)	
	8.571	15	8.61	15	8.25	16	8.10	20
	7.200	37	7.26	34	7.74	28	6.67	36
	9.293	1	9.11	4	8.77	4	8.61	9
	8.633	14	8.15	22	8.10	22	8.76	5
	8.982	10	9.23	2	8.86	2	8.84	4
	5.900	44	5.78	43	5.95	41	5.79	43
	9.172	2	9.05	5	8.81	3	9.18	2
	9.035	7	9.03	7	8.62	9	8.72	6
	4.554	46	4.66	46	5.81	44	4.00	45
	9.037	6	8.88	8	8.75	5	8.42	12
	6.116	43	6.21	42	5.81	43	6.06	42
	7.879	28	7.77	30	7.49	30	6.64	37
	8.381	19	7.93	28	8.49	11	8.40	13
	7.667	34	7.96	26	8.16	19	8.00	23
	8.650	13	8.60	16	8.11	21	8.16	19
	7.787	32	7.95	27	7.95	24	7.25	31
	8.816	12	8.71	12	8.49	12	8.05	21
	8.571	16	8.31	19	8.64	8	8.36	15
	8.371	21	8.78	11	7.98	23	7.76	26
	4.703	45	4.78	45
가	7.869	29	7.55	33	7.16	35	7.75	27
	8.959	11	9.04	6	8.65	7	8.56	10
	7.833	30	6.88	38	7.41	32	7.29	30
	9.085	5	8.66	13	8.60	10	8.94	3
	8.360	22	8.19	21	8.24	17	8.17	18
	9.167	3	8.87	9	8.27	15	8.21	17
	8.346	23	8.25	20	7.91	26	6.63	38
	7.812	31	7.96	25	7.37	33	6.68	35
	6.205	42	6.49	39	6.55	38	6.28	39
	7.102	38	6.44	41	7.11	36	6.21	41
	7.394	35	6.44	40	5.83	42	7.11	32
	3.708	47	4.00	47	4.16	46	5.68	44
	7.681	33	7.79	29	7.26	34	7.41	29
	8.983	9	8.58	17	7.92	25	8.48	11
	7.968	27	7.57	32	7.68	29	8.21	16
	8.082	26	7.68	31	7.48	31	7.06	33
	7.318	36	6.95	37	6.18	39	6.96	34
	8.571	17	8.80	10	8.48	13	8.38	14
	6.920	40	7.13	35	6.03	40	6.24	40
	8.264	24	8.64	14	8.36	14	8.61	8
	8.378	20	8.05	24	7.79	27	7.85	25
	9.160	4	9.13	3	8.73	6	8.67	7
	6.912	41	6.98	36	6.91	37	7.52	28
가	6.971	39	5.74	44	5.14	45	3.79	46
	8.250	25	8.12	23	8.21	18	8.00	22
	8.463	18	8.56	18	8.13	20	7.95	24
	9.000	8	9.25	1	9.03	1	9.19	1

IMD 2000 가 가

4-7.

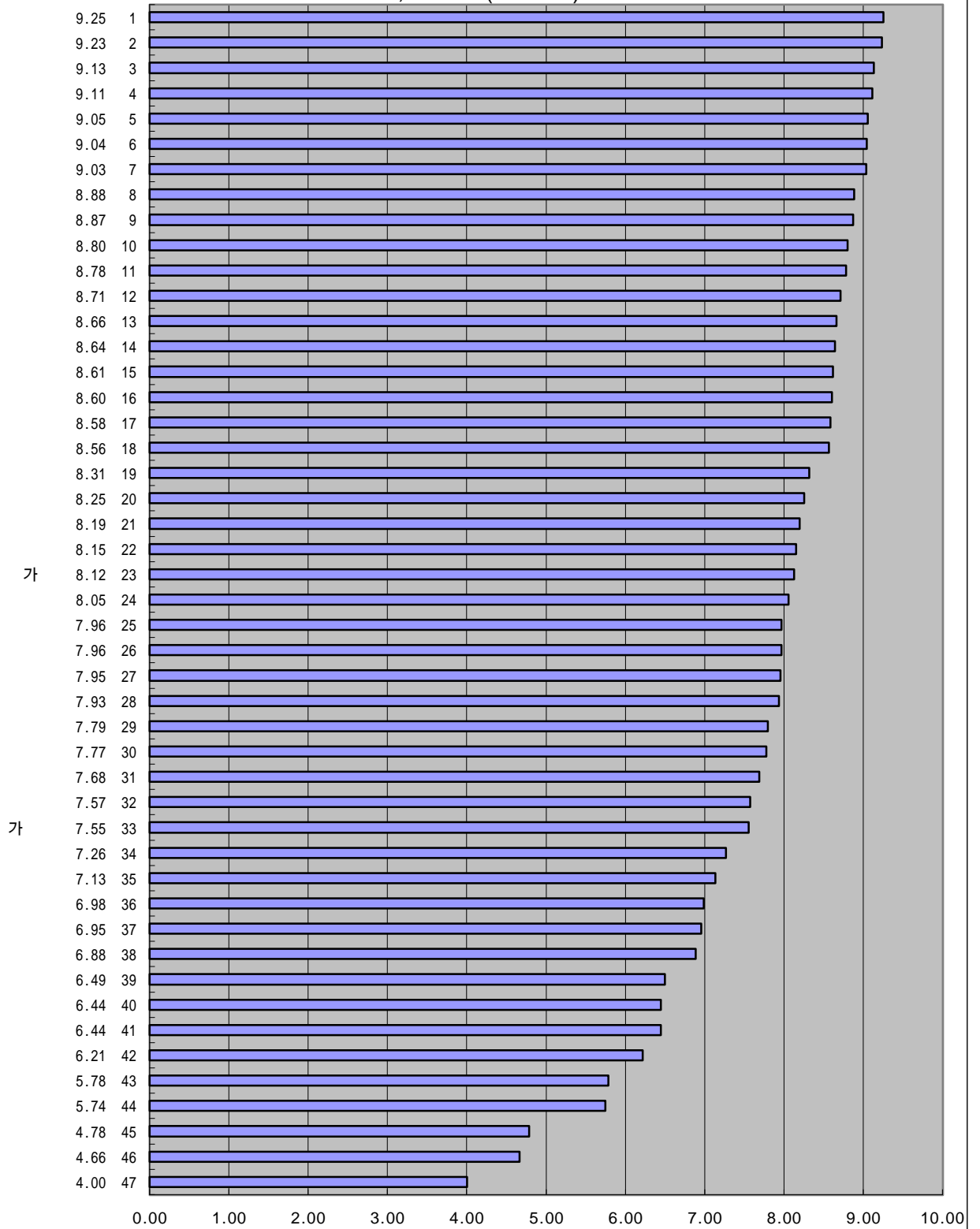
2000 , (1 - 10)



IMD 가 1999 가 가

4-7.

1999 , (1-10)



:

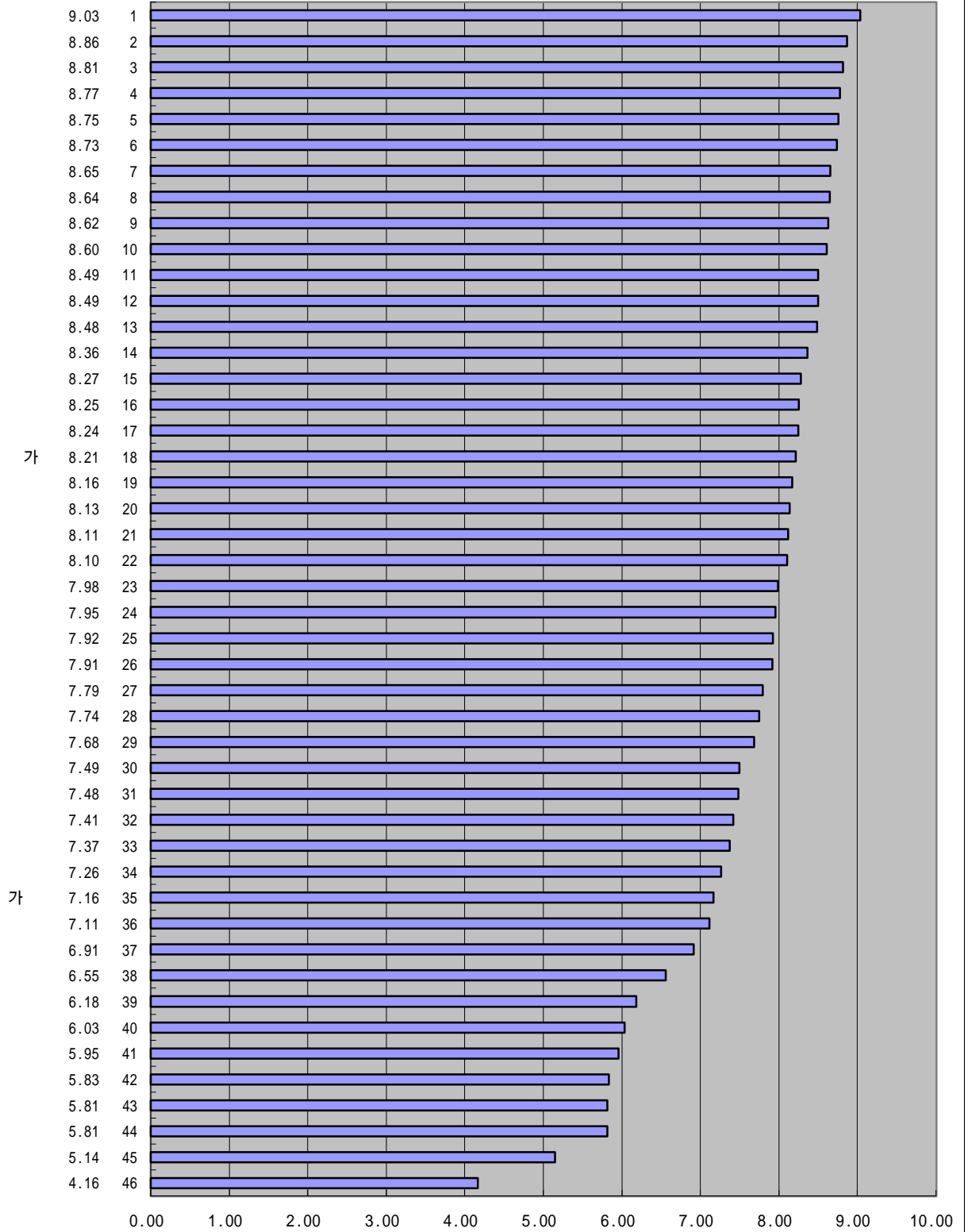
(IMD), 1999

(1999.4.21)

IMD 가
1998 가
가

4-5.

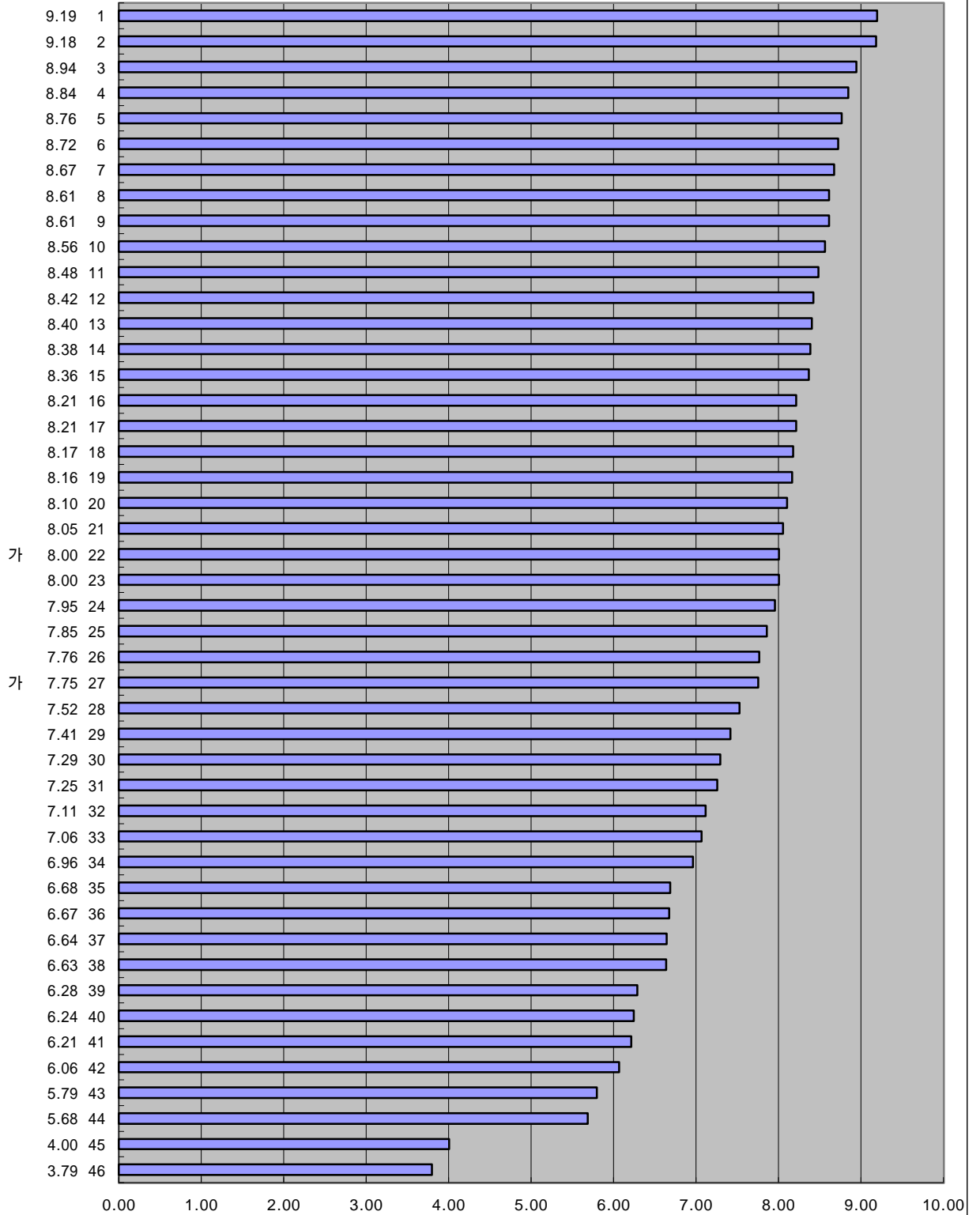
1998 , (1-10)



IMD 가
1997 가
가

4-5.

1997 , 1-10



:

(IMD), 1997

(1997.3.25)