

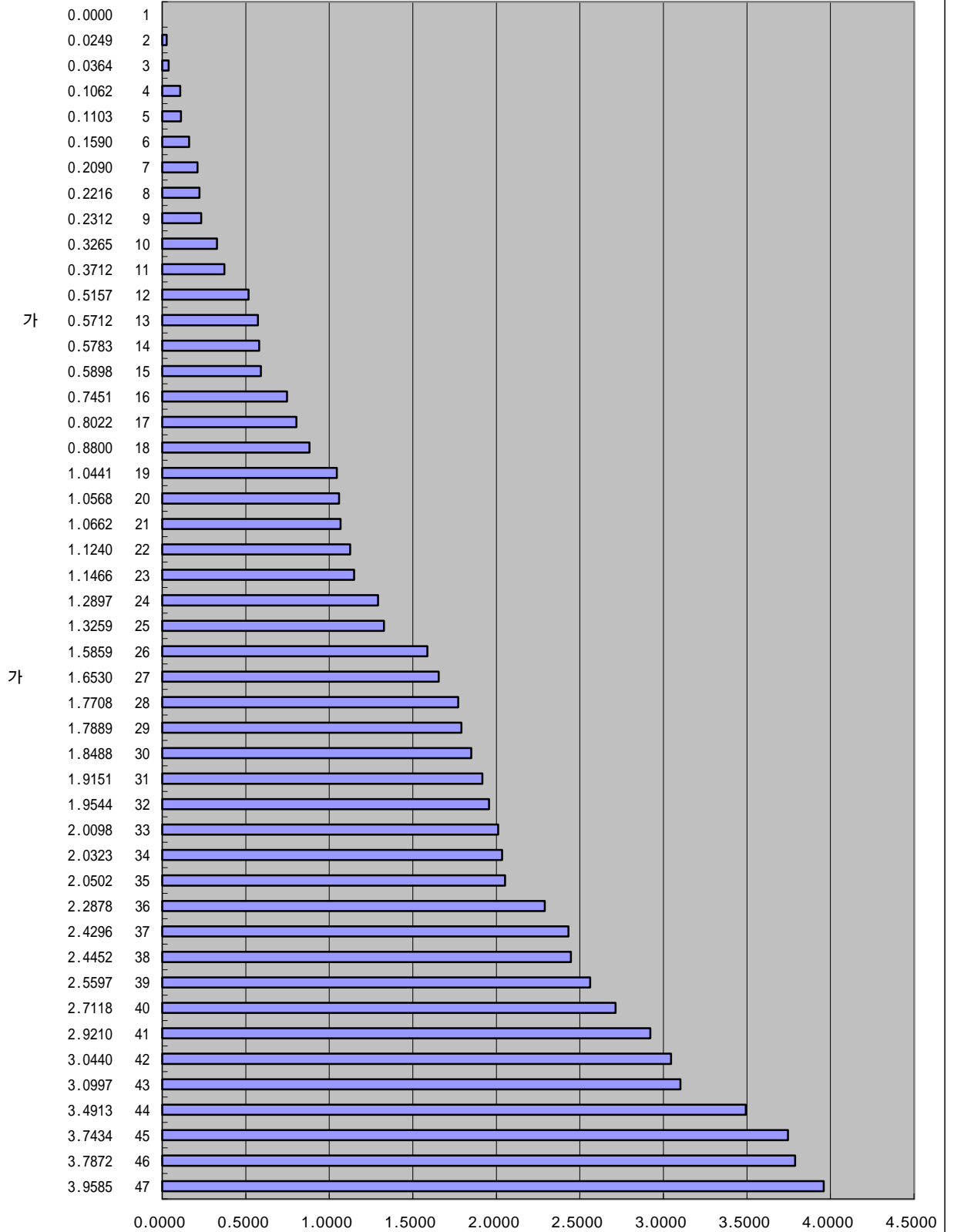
IMD 가
1997-2000
가 가

	2000		1999		1998		1997	
	3-23. ('98)(%, GDP)		3-23. ('97)(%, GDP)		3-22. ('96)(%, GDP)		3-15. ('95)(%, GDP)	
	1.3259	25	1.28	24	1.075	19	1.10	19
	1.5859	26	1.87	29	2.092	33	2.09	34
	2.0098	33	1.99	31	1.887	30	1.79	31
	1.0568	20	0.88	20	1.159	21	1.17	22
	2.0323	34	2.05	33	1.905	31	2.02	33
	3.7872	46	4.80	46	3.719	45	4.08	46
	1.7889	29	1.66	28	1.726	28	1.78	30
	0.8800	18	1.04	21	1.149	20	1.08	18
	1.7708	28	5.43	47	1.644	26	1.23	24
	3.4913	44	3.22	43	3.025	40	3.38	43
	0.5157	12	0.52	14	0.586	15	0.13	7
	0.1590	6	0.27	10	0.207	8	0.00	1
	3.0440	42	3.05	40	3.081	41	3.26	42
	0.0249	2	0.02	2	0.017	4	1.28	26
	1.2897	24	1.32	25	1.208	22	1.11	21
	1.8488	30	1.37	26	1.371	24	1.26	25
	1.9151	31	2.09	34	1.937	32	1.36	27
	2.9210	41	2.56	37	2.419	36	2.35	37
	2.0502	35	2.01	32	1.779	29	1.81	32
	1.0662	21	0.03	3
가	1.6530	27	1.65	27	1.456	25	1.46	28
	0.2312	9	0.25	9	0.219	9	0.11	6
	2.2878	36	2.60	38	2.700	39	2.81	40
	1.9544	32	1.98	30	1.663	27	1.60	29
	3.9585	47	3.74	44	3.676	44	3.70	44
	0.5898	15	0.60	17	0.624	16	0.63	15
	0.3265	10	0.34	11	2.587	37	2.49	38
	2.4452	38	2.31	35	2.243	34	2.15	35
	0.1103	5	0.12	6	0.116	6	0.10	5
	0.2216	8	0.16	7	0.423	10	0.43	10
	3.0997	43	3.22	42	3.355	43	3.23	41
	0.2090	7	0.65	18	0.002	3	0.00	1
	0.5783	14	0.54	15	0.518	13	0.56	14
	0.7451	16	0.12	5	0.001	2	0.00	1
	3.7434	45	3.77	45	3.819	46	3.88	45
	0.0000	1	0.00	1	0.000	1	0.00	1
	0.3712	11	0.43	12	0.434	11	0.55	13
	0.8022	17	0.50	13	0.458	12	0.69	16
	1.1466	23	1.15	23	1.213	23	1.19	23
	1.0441	19	0.83	19	0.835	17	0.89	17
	2.4296	37	2.53	36	2.338	35	2.32	36
	1.1240	22	1.09	22	1.057	18	1.10	20
	0.0364	3	0.04	4	0.026	5	0.17	9
	2.5597	39	3.15	41	3.147	42	0.46	11
가	0.5712	13	0.60	16	0.577	14	0.53	12
	2.7118	40	2.65	39	2.616	38	2.66	39
	0.1062	4	0.19	8	0.151	7	0.15	8

IMD 가
2000 가
가 가

3-23.

('98)(%, GDP)



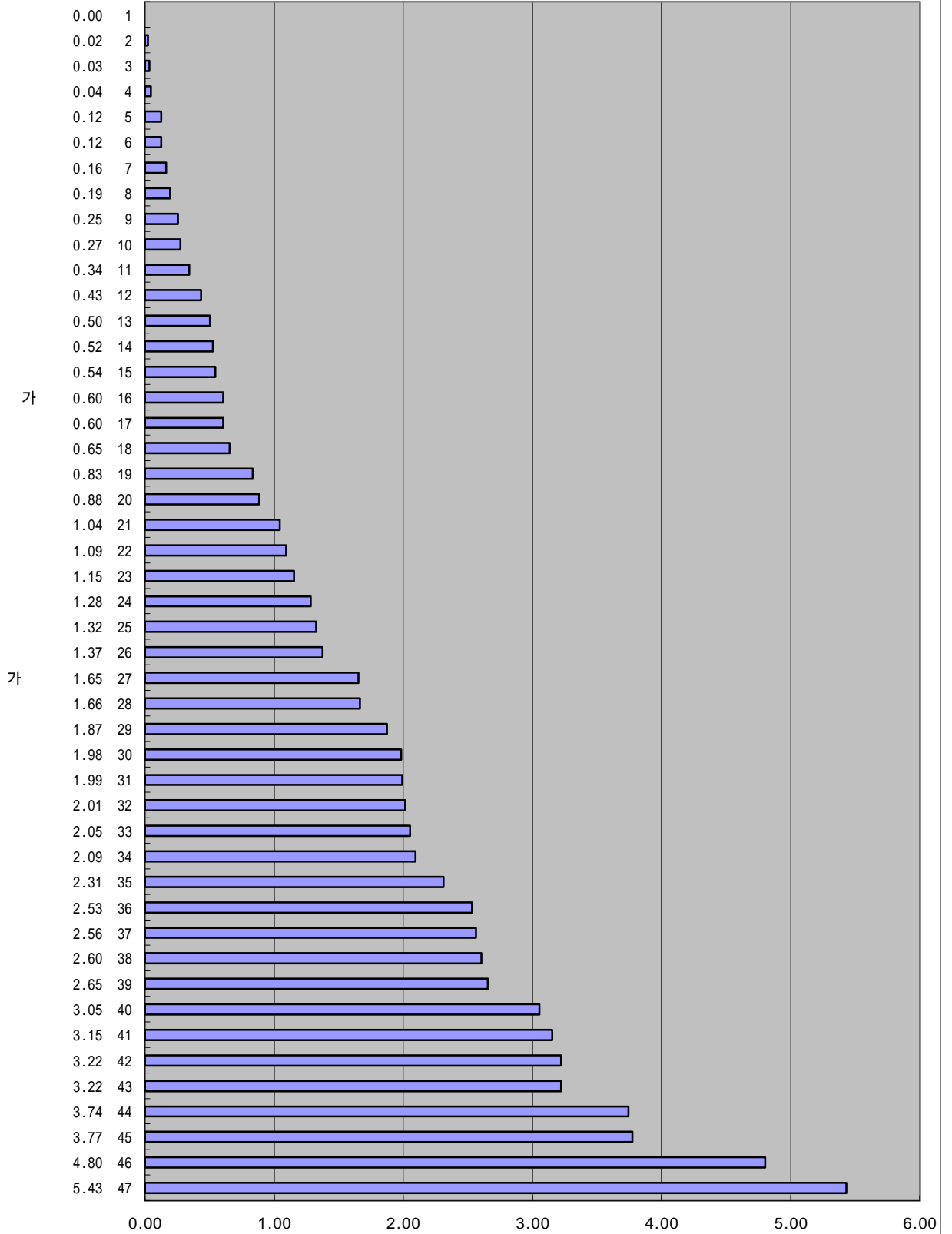
IMD 가

1999

가 가

3-23.

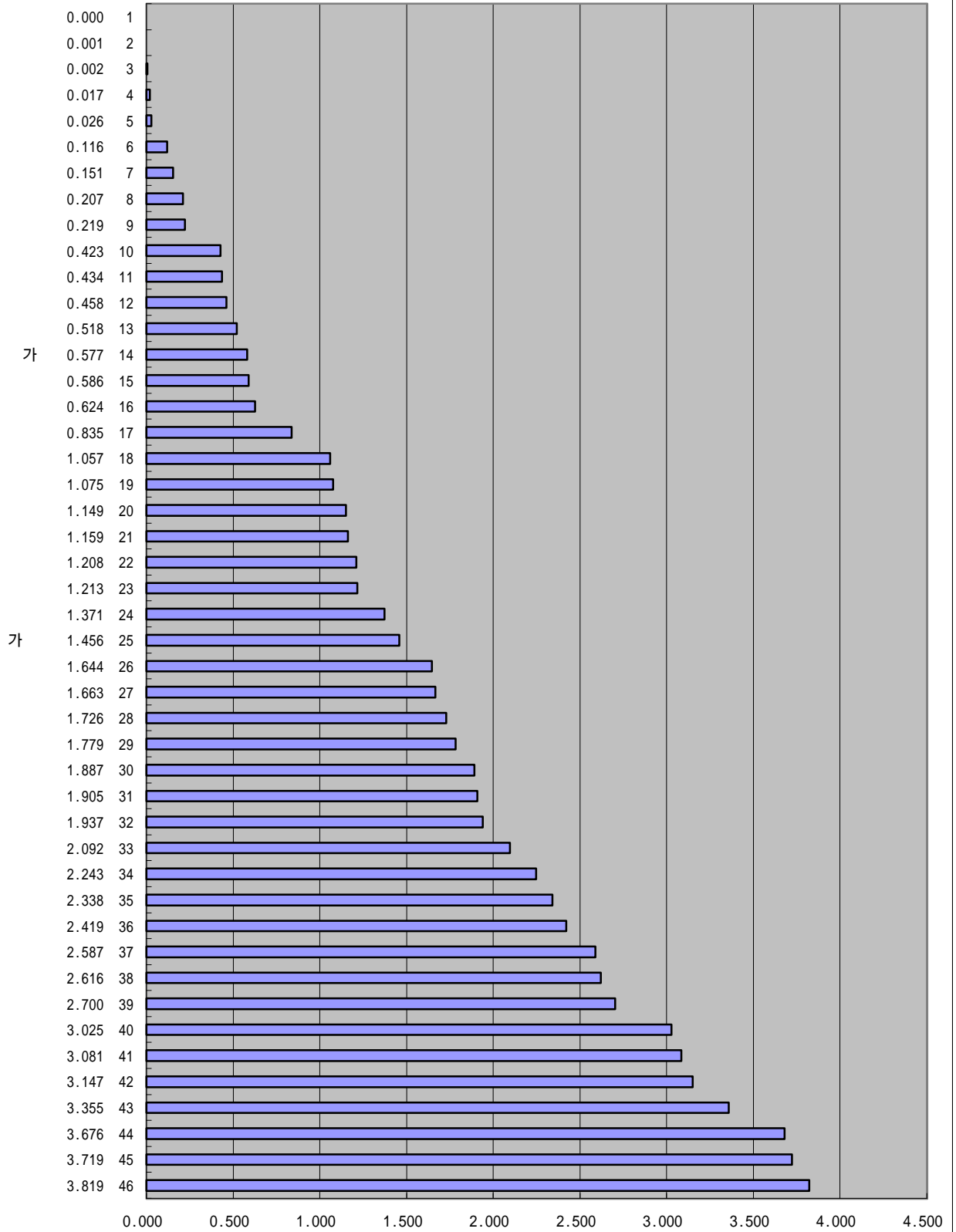
('97)(%, GDP)



IMD 가 1998 가 가

3-22.

('96)(%, GDP)



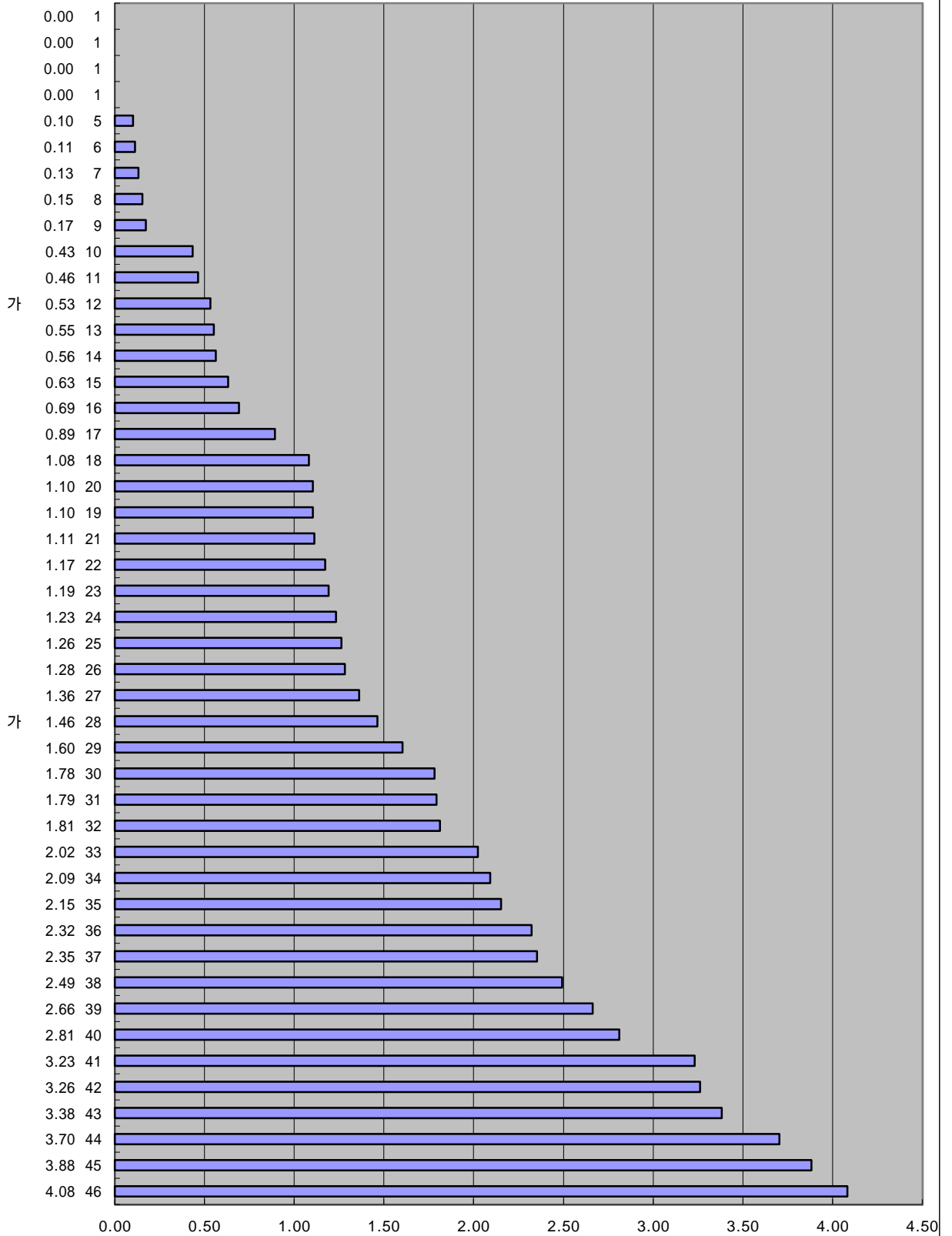
IMD 가

1997

가 가

3-15.

('95)(%, GDP)



:

(IMD), 1997

(1997.3.25)