

IMD 가
1997-2000
가 가

	2000 3-20. ()('99) (%, 1 GDP)		1999 3-20. ()('98) (%, 1 GDP)		1998 3-19. ()('97) (%, 1 GDP)		1997 3-19. ()('95) (%, 1 GDP)	
	28.56	36	28.56	36	27.96	34	4.62	28
	0.28	4	0.30	5	0.30	8	0.21	11
	18.78	27	18.16	29	17.77	29	3.09	22
	14.10	24	14.10	24	14.10	27	5.76	32
	2.61	8	2.61	9	2.00	11	0.00	1
	7.09	15	9.41	20	12.20	24	2.61	20
	1.23	6	1.79	7	1.32	10	0.32	12
	13.94	23	14.25	25	13.52	26	7.81	36
	39.51	45	40.49	42	0.01	6	5.83	33
	11.39	19	11.30	22	11.22	23	5.93	34
	12.00	21	0.00	1	0.00	1	0.14	9
	20.10	31	19.92	31	24.70	33	2.28	18
	7.64	16	7.65	16	7.65	18	4.62	29
	14.29	25	12.87	23	7.55	17	0.73	14
	33.27	41	33.13	39	33.18	40	9.39	38
	35.99	43	36.01	41	36.00	42	4.29	27
	32.91	40	45.06	44	32.92	39	12.40	43
	6.54	13	9.27	19	13.01	25	3.89	25
	32.84	39	30.80	37	30.80	36	8.57	37
	19.90	29	17.90	27
가	20.00	30	20.00	32	0.00	1	0.00	1
	19.69	28	32.00	38	32.00	38	2.78	21
	5.22	11	5.53	12	6.93	15	2.43	19
	11.99	20	8.50	18	8.50	20	3.19	23
	8.60	17	10.00	21	10.20	21	3.40	24
	29.12	37	28.05	35	29.06	35	7.35	35
	4.92	10	4.93	11	18.35	30	0.68	13
	44.44	46	46.36	45	50.59	46	12.76	44
	0.00	1	0.00	1	0.00	1	0.00	1
	4.18	9	4.24	10	4.24	13	0.00	1
	14.38	26	19.79	30	20.36	31	5.01	30
	0.00	1	0.00	1	0.00	1	0.00	1
	35.69	42	35.71	40	35.71	41	11.26	41
	0.34	5	0.30	6	0.30	8	1.31	16
	6.63	14	6.62	14	6.98	16	4.17	26
	32.00	38	18.13	28	16.77	28	0.00	1
	2.10	7	2.09	8	2.49	12	0.16	10
	22.62	33	15.16	26	10.84	22	1.74	17
	20.32	32	48.15	46	48.20	44	13.01	45
	23.75	35	23.75	34	23.75	32	5.18	31
	50.58	47	54.64	47	41.36	43	11.87	42
	23.05	34	23.05	33	31.10	37	10.32	39
	8.66	18	8.36	17	7.73	19	0.00	1
	6.00	12	7.50	15	0.01	6	0.93	15
가	37.48	44	44.51	43	48.49	45	10.94	40
	12.99	22	6.00	13	6.00	14	0.00	1
	0.00	1	0.00	1	0.00	1	.	.

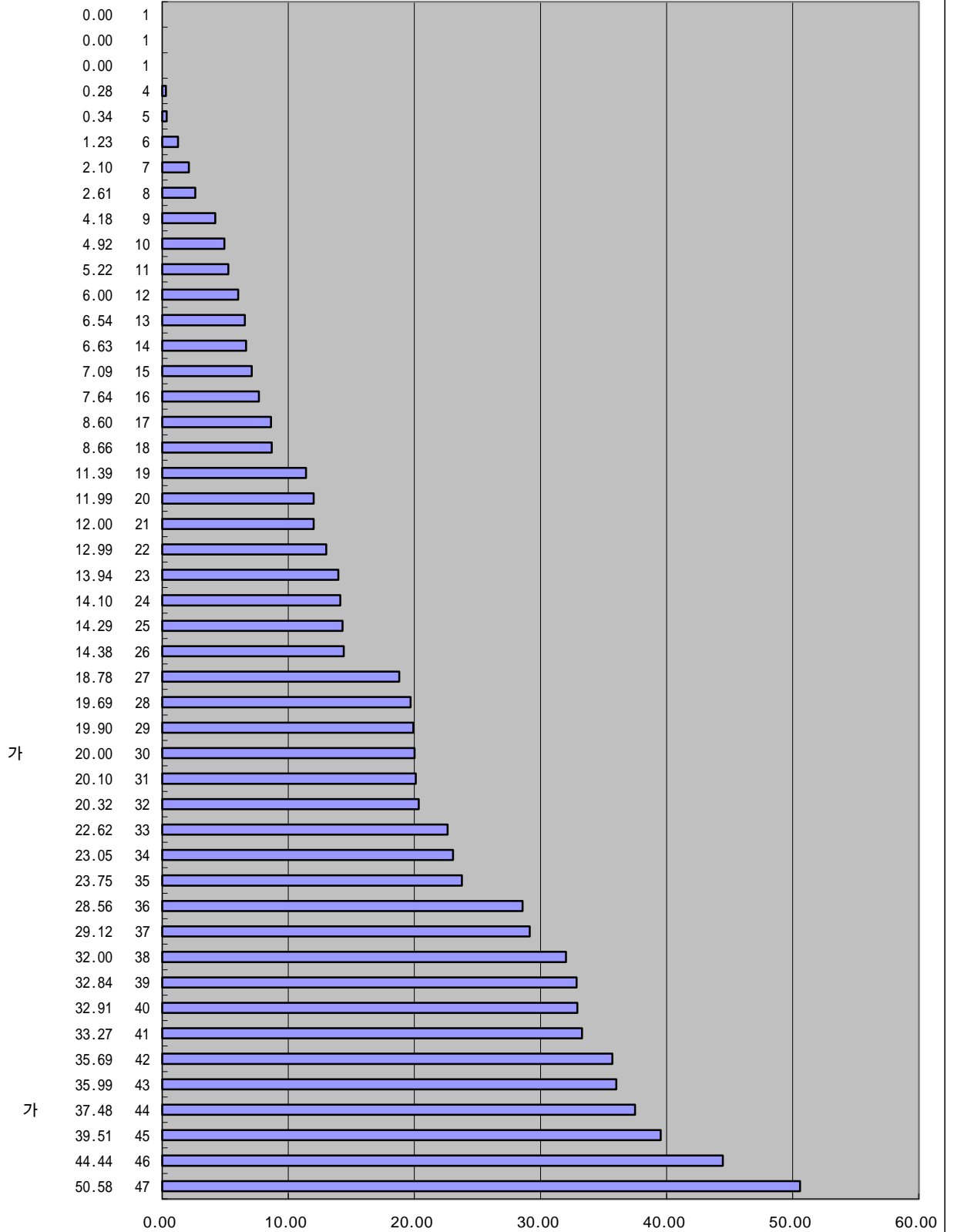
IMD 가

2000

가 가

3-20.

()('99)(%, 1 GDP)



가

가

:

(IMD), 2000

(2000.4.19)

IMD

가

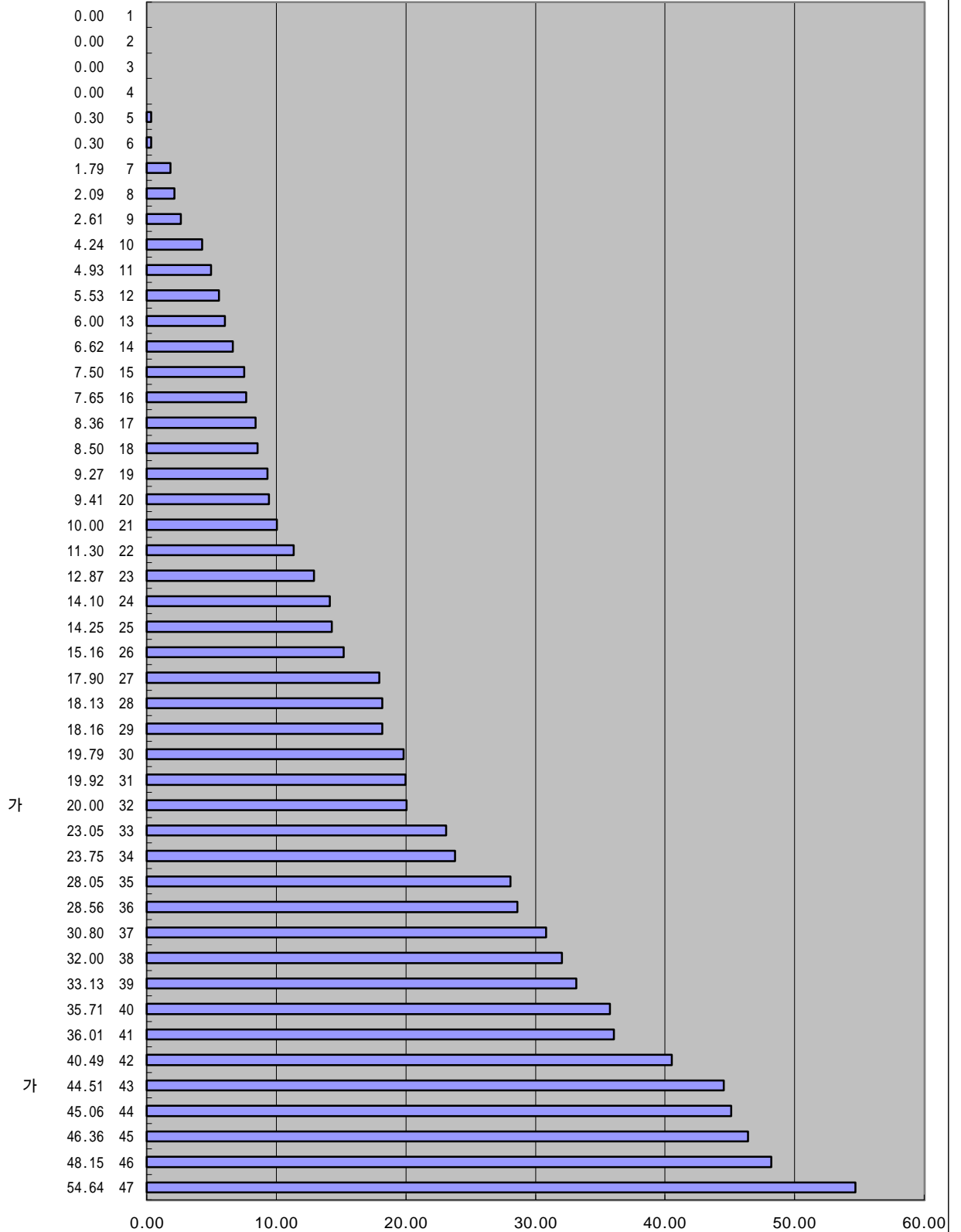
1999

가

가

3-20.

(('98)(%, 1 GDP))



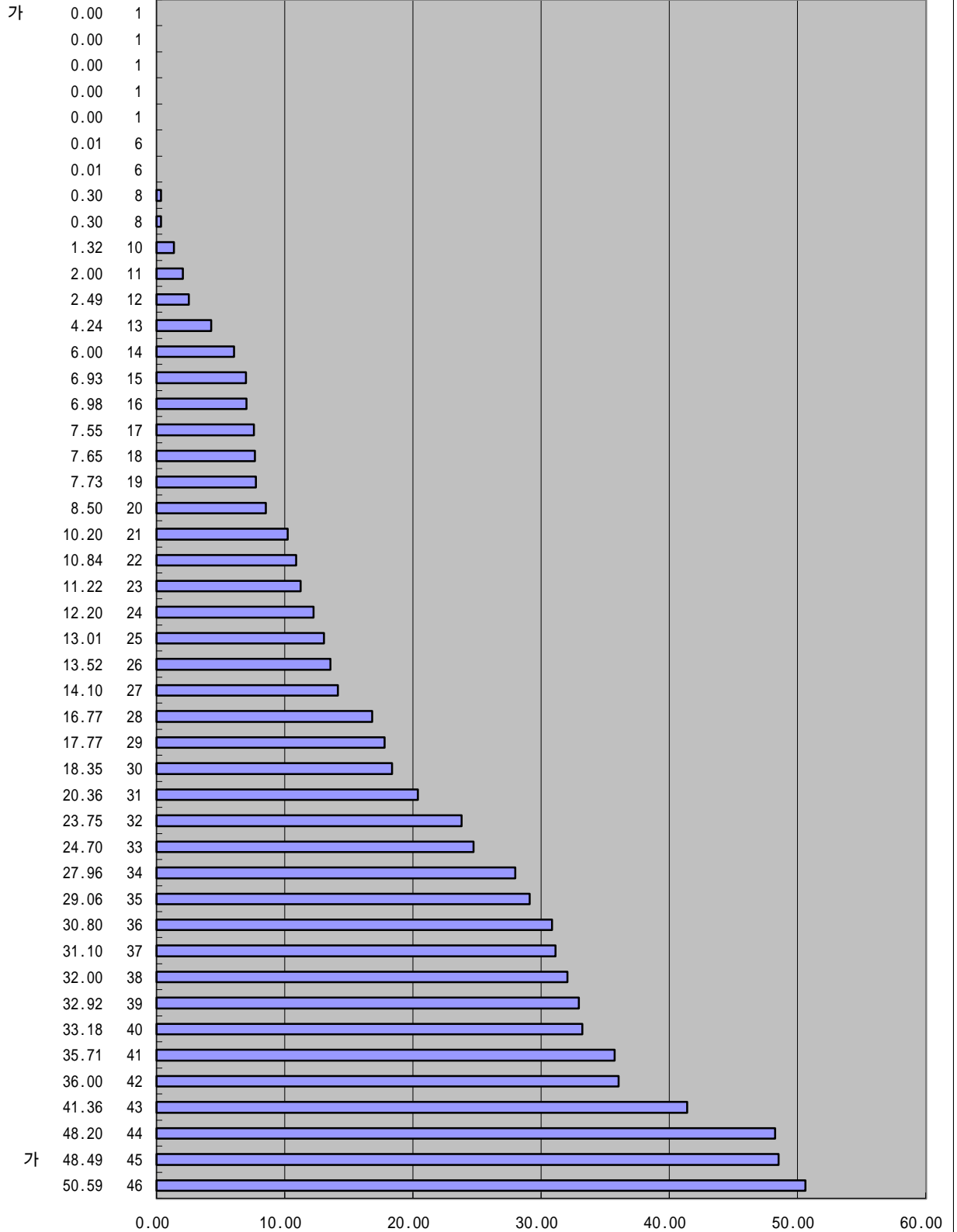
IMD 가

1998

가 가

3-19.

()('97)(%, 1 GDP)



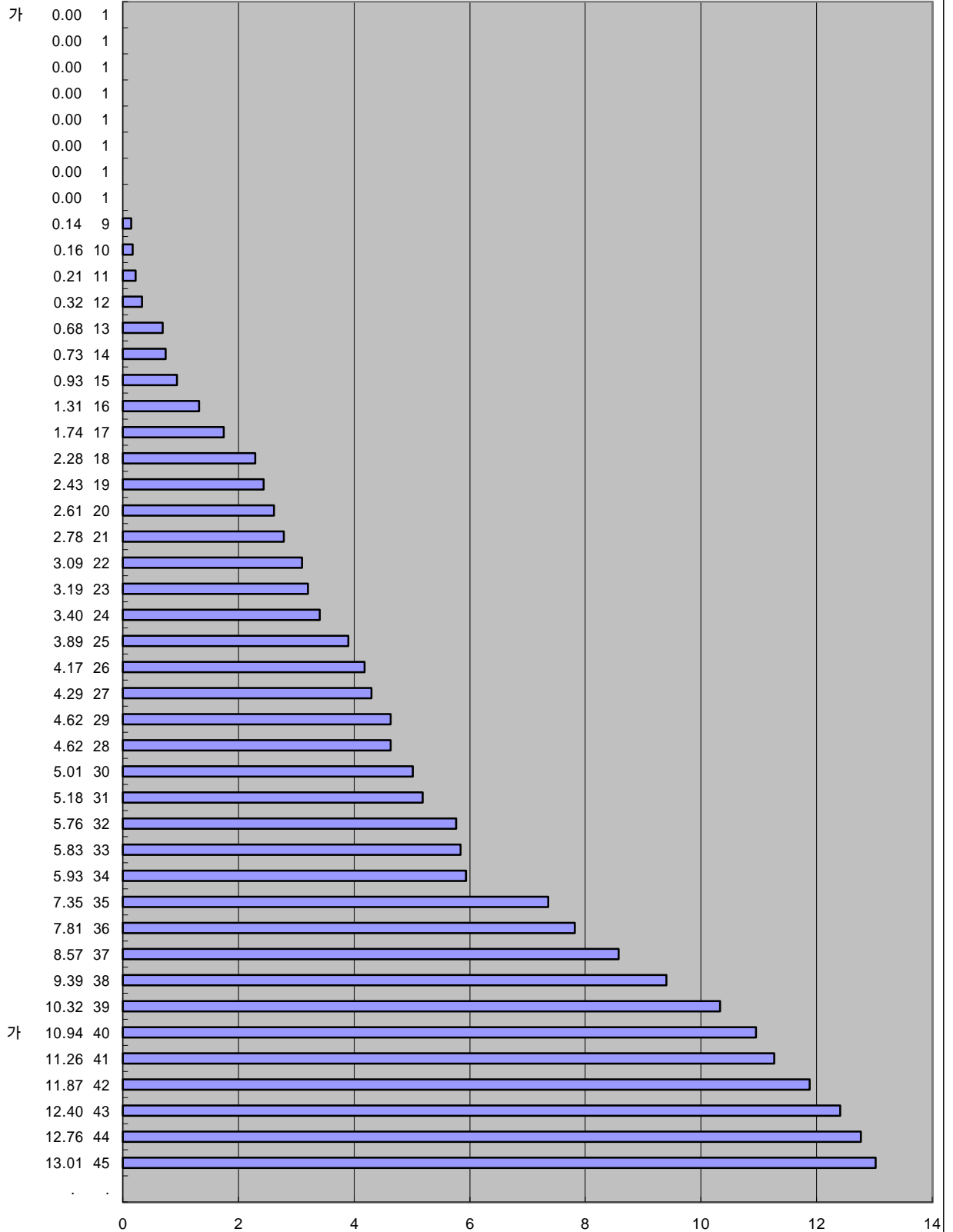
IMD 가

1997

가 가

3-19.

()('95)(%, 1 GDP)



:

(IMD), 1997

(1997.3.25)