

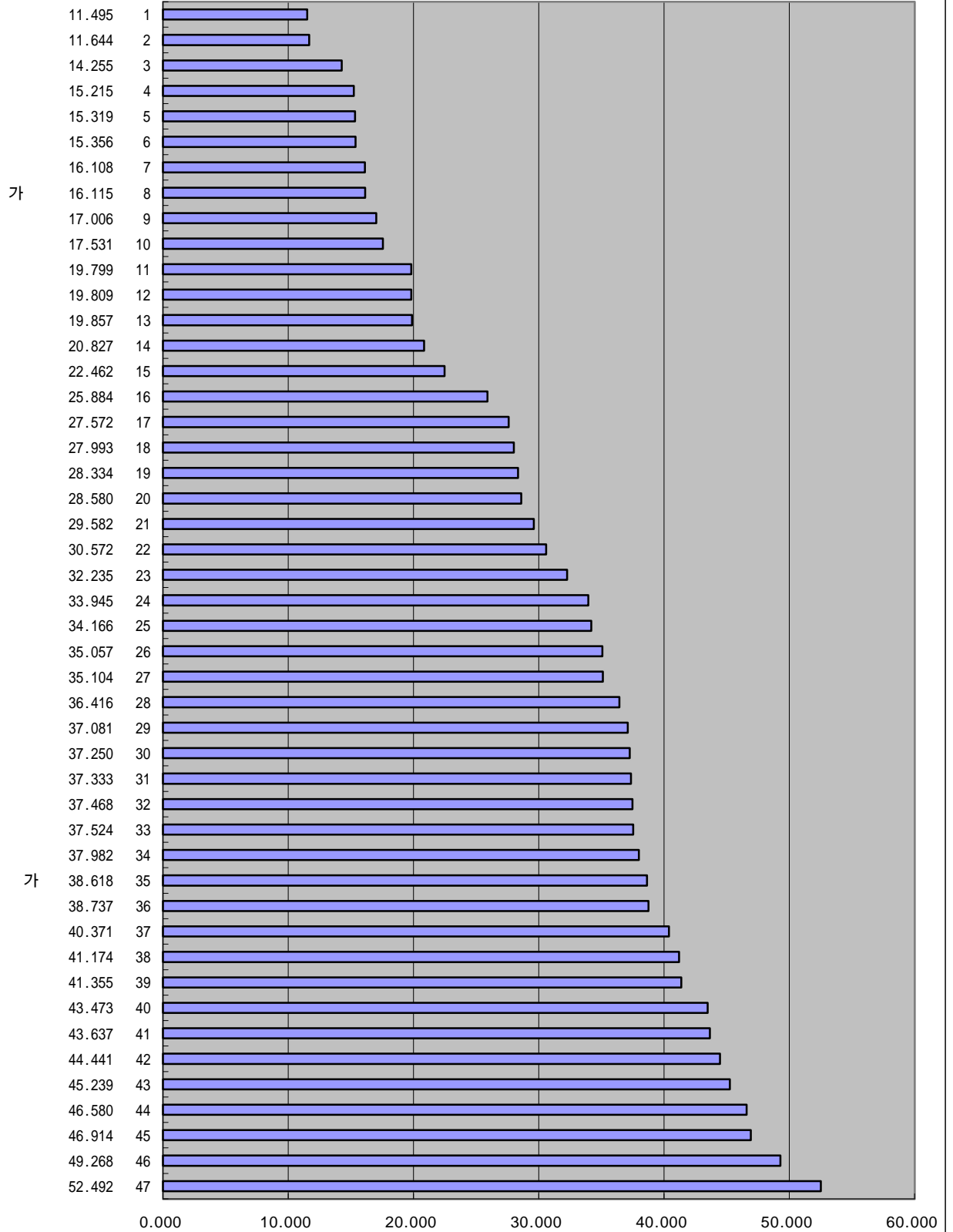
IMD 가
1997-2000
가 가

	2000 3-12. ('98)(%, GDP)()		1999 3-12. ('97)(%, GDP)()		1998 3-11. ('96)(%, GDP)()		1997 3-11. ('95)(%, GDP)()	
	33.945	24	32.18	24	33.83	27	32.71	24
	25.884	16	16.11	6	26.20	19	24.58	17
	41.355	39	43.24	40	43.50	39	44.42	39
	43.637	41	42.47	39	41.40	37	41.68	35
	35.057	26	36.92	31	36.19	32	38.56	32
	15.356	6	16.82	7	16.00	9	17.58	11
	49.268	46	49.69	46	51.93	46	51.78	46
	37.250	30	37.72	33	38.20	34	39.15	33
	27.993	18	19.39	12	16.40	11	28.95	21
	41.174	38	41.03	37	39.46	35	46.80	44
	19.857	13	19.86	13	20.58	15	20.16	15
	15.319	5	16.86	8	15.95	8	16.33	10
	28.334	19	27.86	17	27.57	20	27.01	18
	15.215	4	21.97	15	13.88	4	14.85	4
	46.580	44	46.53	44	45.97	43	45.75	41
	19.809	12	29.16	21	29.16	22	27.73	19
	52.492	47	53.31	47	51.56	45	49.92	45
	35.104	27	34.58	26	34.74	28	34.12	25
	34.166	25	35.24	28	33.72	26	34.14	26
	40.371	37	29.05	20				
가	16.115	8	41.56	38	16.26	10	16.17	8
	16.108	7	15.28	4	14.61	5	15.96	6
	32.235	23	15.89	5	32.32	24	31.20	22
	37.524	33	37.35	32	35.39	31	36.17	31
	37.333	31	34.63	27	35.12	30	35.25	28
	44.441	42	44.70	41	43.95	41	41.97	36
	36.416	28	36.74	30	34.75	29	35.36	29
	43.473	40	44.95	42	43.52	40	46.34	43
	19.799	11	38.41	34	15.43	7	15.09	5
	27.572	17	14.69	3	14.69	6	16.31	9
	28.580	20	28.43	19	28.81	21	28.75	20
	11.644	2	11.01	1	10.19	1	12.95	2
	38.737	36	39.38	36	40.50	36	44.32	38
	20.827	14	20.33	14	17.79	13	17.79	13
	37.468	32	36.37	29	36.34	33	36.09	30
	11.495	1	13.63	2	13.63	3	13.63	3
	17.531	10	19.97	11	17.98	14	18.24	14
	29.582	21	27.95	18	25.25	18	20.52	16
	37.982	34	38.84	35	41.92	38	42.58	37
	37.081	29	34.20	25	33.53	25	35.21	27
	45.239	43	46.12	43	45.64	42	44.46	40
	46.914	45	46.95	45	48.15	44	46.16	42
	17.006	9	17.01	9	16.75	12	16.03	7
	22.462	15	23.25	16	23.25	17	17.67	12
가	38.618	35	31.83	23	23.01	16	41.05	34
	30.572	22	30.24	22	31.45	23	32.12	23
	14.255	3	17.23	10	11.11	2	11.11	1

IMD 가 2000 가 가

3-12.

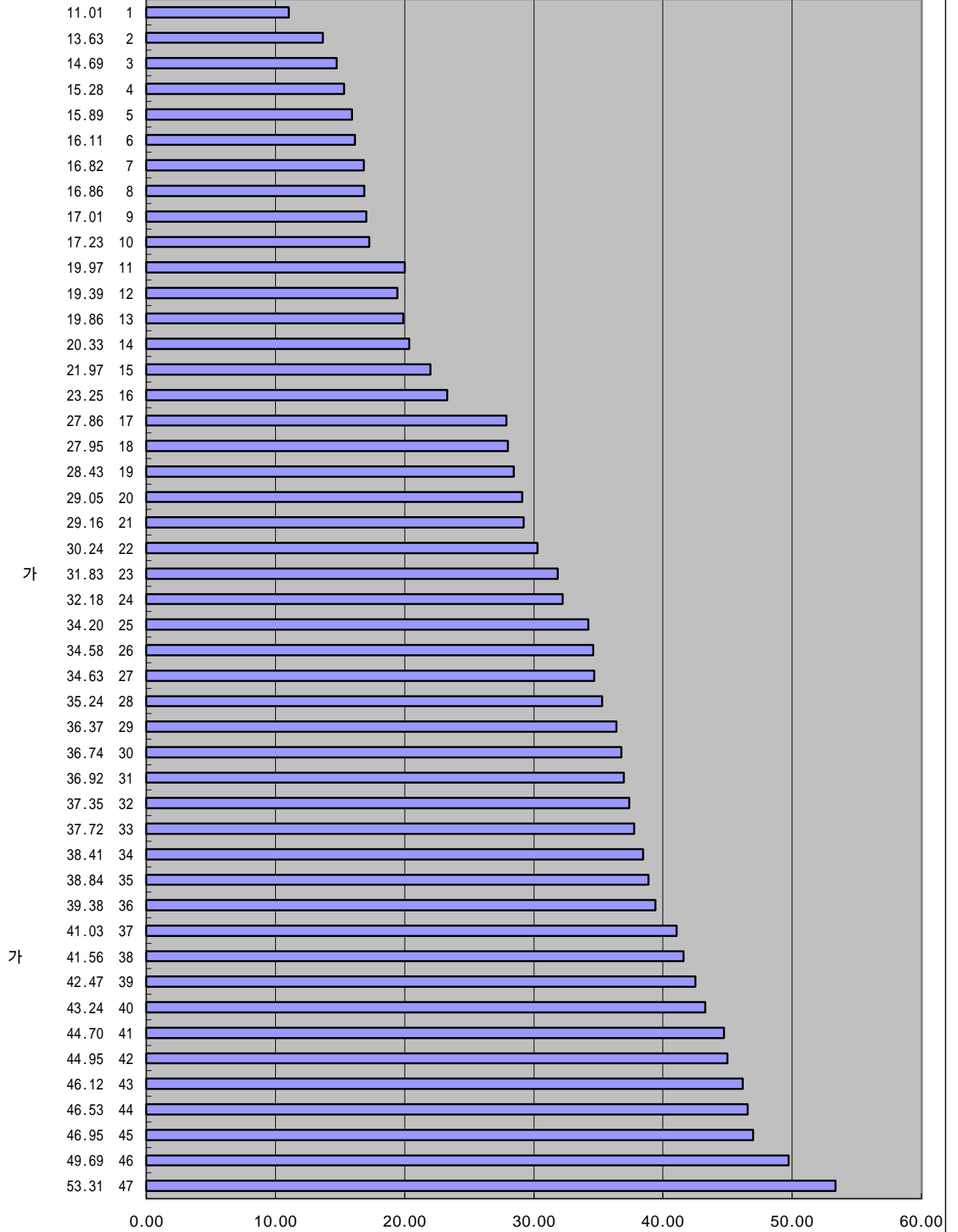
(,)('98)(%, GDP)



IMD 가
1999 가
가

3-12.

(,)('97)(%, GDP)



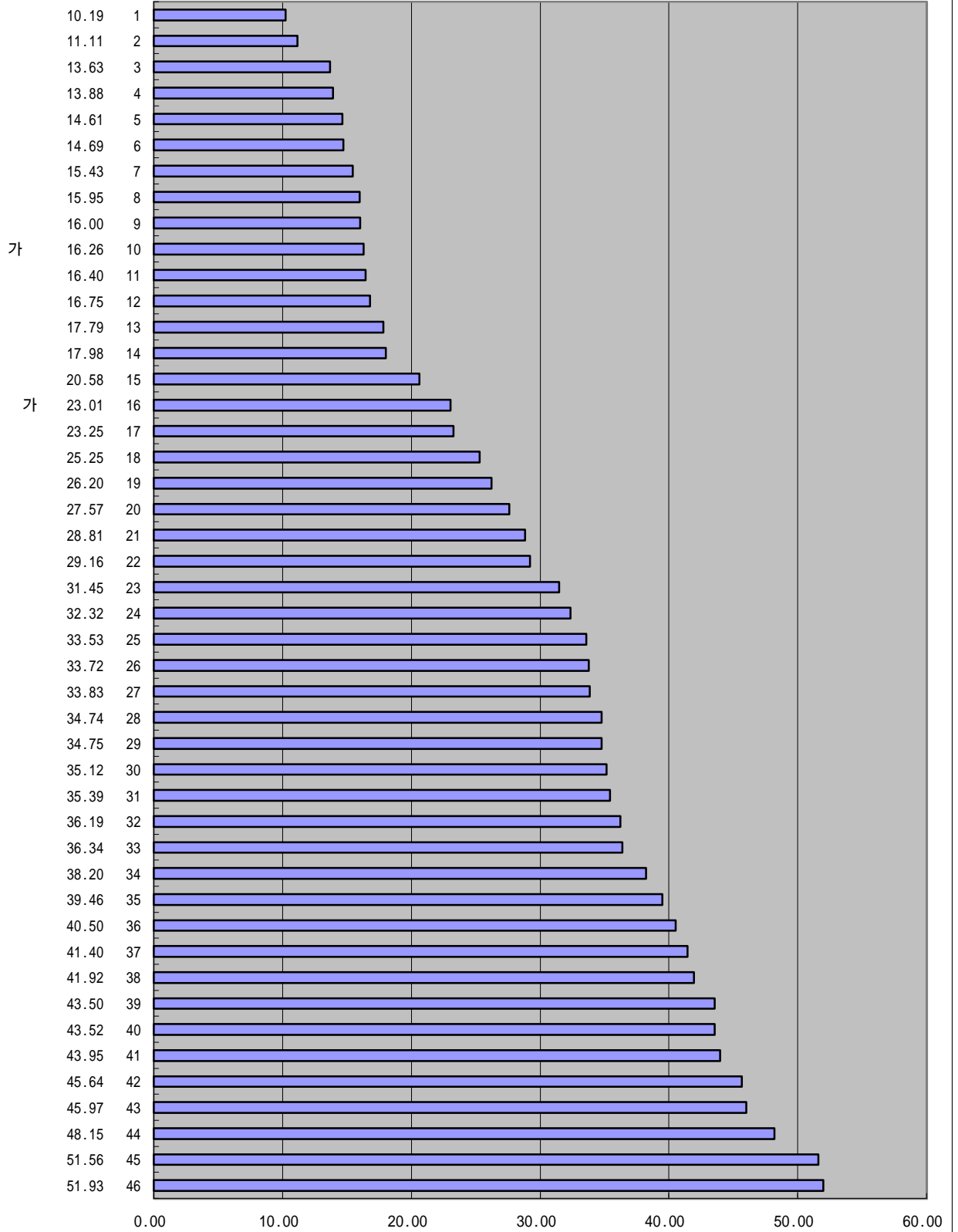
IMD 가

1998

가 가

3-11.

(,)('96)(%, GDP)



IMD 가

1997

가

가

3-11.

('95)(

)(%, GDP)

