

IMD

가

1997-2000

가

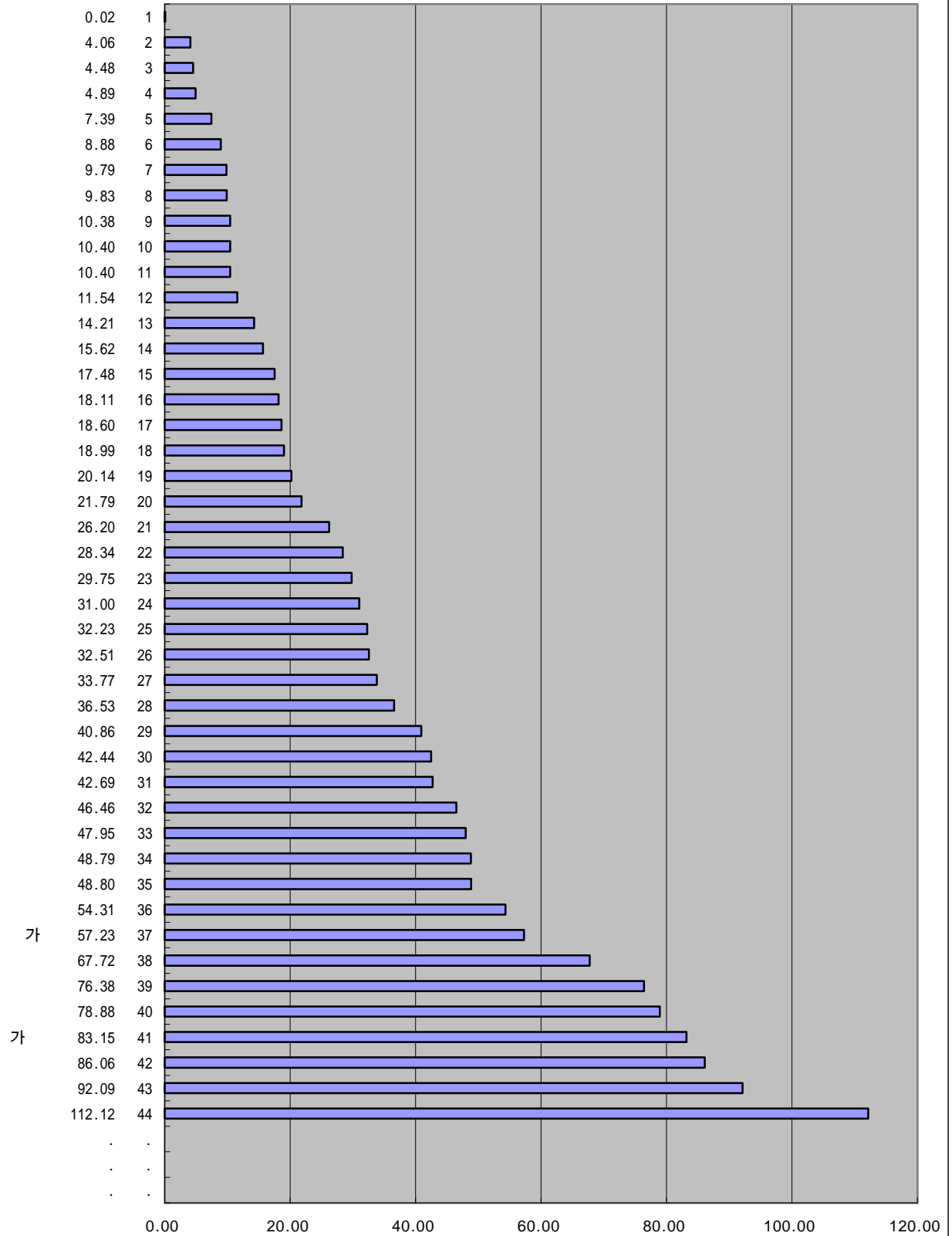
가

	2000		1999		1998		1997	
	3-2.		3-2.		3-2.		3-2.	
	('98)(%, GDP )		('97)(%, GDP )		('96)(%, GDP )		('95)(%, GDP )	
	92.09	43	94.0	41	96.943	42	80.1	40
	48.80	35	54.1	35	55.016	36	53.2	37
	42.69	31	46.9	31	47.974	35	47.2	35
	18.11	16	18.4	16	19.718	18	23.6	22
	18.60	17	29.0	22	29.032	24	29.0	25
	15.62	14	16.2	14	16.236	16	16.2	16
	.	.	.	.	.	.	.	.
	18.99	18	21.0	18	22.489	21	22.1	20
	28.34	22	.	.	12.105	14	11.3	12
	4.48	3	3.5	6	3.293	8	3.3	7
	31.00	24	31.7	24	31.737	26	42.2	32
	9.83	8	8.6	10	9.748	12	9.7	10
	29.75	23	31.8	25	36.117	29	38.2	30
	7.39	5	5.0	7	7.552	11	12.3	13
	112.12	44	112.5	42	112.505	43	113.4	43
	36.53	28	17.3	15	0.015	2	0.0	1
	32.51	26	35.6	27	37.190	30	37.2	29
	26.20	21	24.2	21	22.534	22	22.0	19
	40.86	29	44.8	28	46.573	34	35.7	27
	14.21	13	.	.	.	.	.	.
가	83.15	41	75.1	38	75.047	39	75.1	38
	8.88	6	8.5	9	1.431	5	1.4	4
	17.48	15	21.7	19	22.060	20	23.0	21
	.	.	.	.	.	.	.	.
	42.44	30	49.8	34	28.153	23	28.2	24
	47.95	33	46.6	30	43.552	32	43.1	33
	86.06	42	91.2	40	91.186	41	94.4	42
	78.88	40	78.9	39	78.877	40	78.8	39
	54.31	36	49.6	33	57.560	37	47.3	36
	0.02	1	0.0	1	0.016	3	0.2	3
	67.72	38	67.7	37	44.696	33	44.7	34
	4.06	2	3.2	5	2.431	7	2.6	6
	9.79	7	8.6	11	7.274	9	10.7	11
	10.40	10	10.3	12	11.092	13	15.0	15
	76.38	39	.	.	35.915	28	35.9	28
	11.54	12	3.2	4	1.589	6	6.9	9
	4.89	4	0.7	3	1.078	4	1.8	5
	21.79	20	21.8	20	17.533	17	17.5	17
	20.14	19	19.3	17	21.174	19	20.0	18
	48.79	34	49.2	32	.	.	.	.
	46.46	32	46.0	29	41.948	31	41.8	31
	33.77	27	34.3	26	31.536	25	24.2	23
	32.23	25	31.2	23	33.782	27	35.6	26
	10.40	11	7.5	8	7.346	10	5.4	8
가	57.23	37	60.1	36	67.876	38	80.3	41
	10.38	9	13.2	13	13.621	15	13.8	14
	.	.	0.0	2	0.000	1	0.0	1

# IMD 2000 가 가

## 3-2.

('98)(%, GDP )



IMD

가

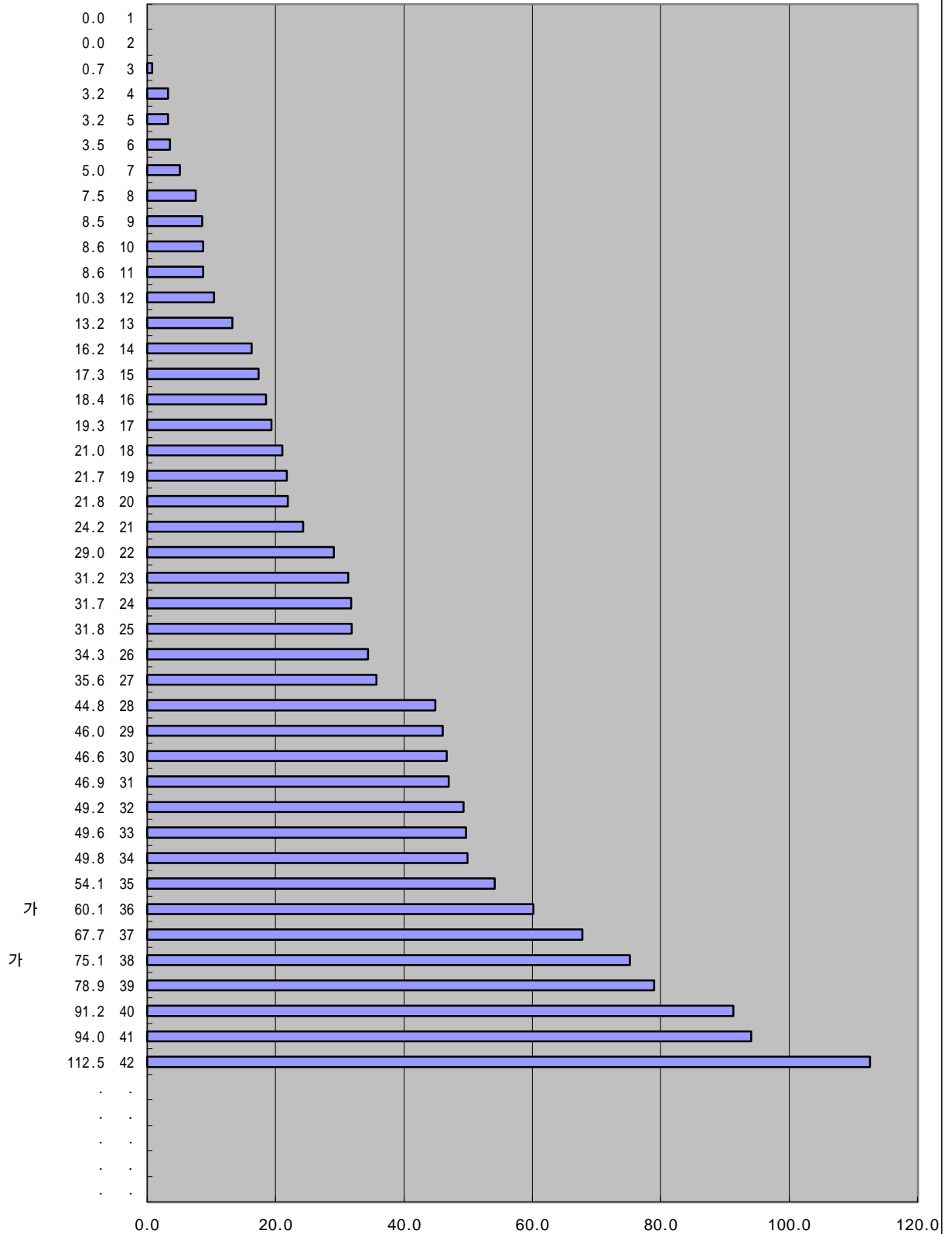
1999

가

가

3-2.

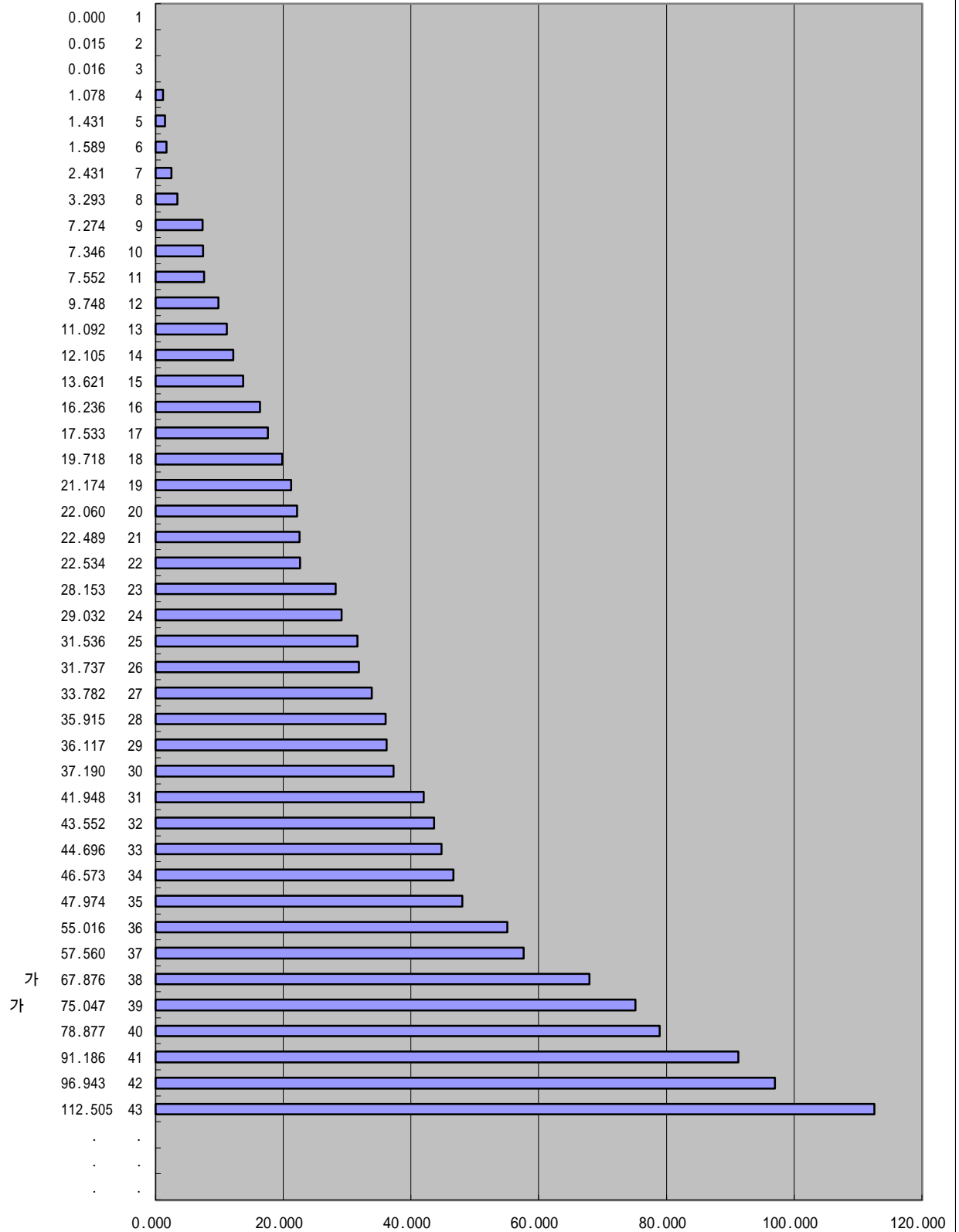
('97)(%, GDP )



# IMD 가

## 1998 가

### 3-2. ('96)(%, GDP )



# IMD 가

## 1997 가

### 3-2. 가

('95)(%, GDP )

