

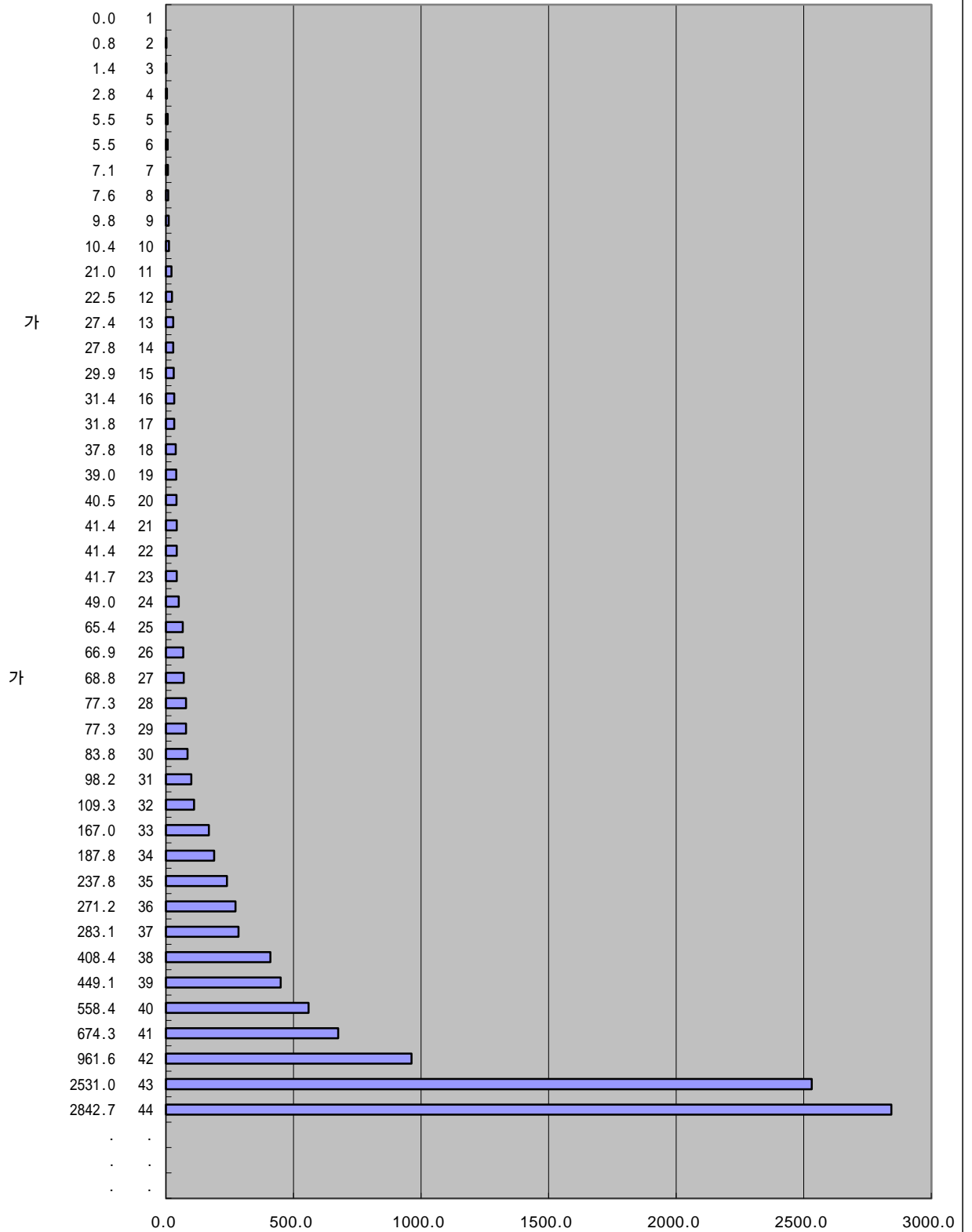
IMD                      가  
1997-2000  
가                              가

	2000		1999		1998		1997	
	3-1.		3-1.		3-1.		3-1.	
	('98)(10 \$)( )		('97)(10 \$)( )		('96)(10 \$)( )		('95)(10 \$)( )	
	109.3	13	112.1	31	119.1	32	73.7	30
	65.4	20	69.8	25	69.5	28	64.7	28
	167.0	12	170.4	33	190.0	34	186.6	35
	27.8	31	29.0	15	28.9	16	29.1	18
	9.8	36	12.1	10	12.1	12	12.1	12
	41.7	22	42.2	21	42.2	23	42.2	24
	.	.	.	.	.	.	.	.
	408.4	7	439.4	37	529.2	39	531.9	39
	77.3	16	.	.	52.9	25	40.4	23
	0.8	43	0.6	3	0.5	4	0.5	4
	22.5	33	31.5	17	31.5	19	29.8	20
	41.4	23	34.6	19	39.3	21	39.3	22
	2531.0	2	2581.9	41	2757.9	43	2772.3	43
	7.1	38	4.4	8	5.3	10	9.4	11
	271.2	9	307.4	36	307.4	38	257.8	37
	283.1	8	139.4	32	0.1	3	0.1	2
	77.3	17	81.0	28	93.6	31	85.7	32
	66.9	19	71.5	27	69.4	27	56.9	26
	237.8	10	238.5	35	260.6	36	171.0	34
	2.8	41	.	.	.	.	.	.
가	68.8	18	71.4	26	63.9	26	63.9	27
	29.9	30	27.4	12	3.7	8	3.7	7
	1.4	42	1.6	5	1.6	6	1.6	5
	0.0	44	.	.	.	.	.	.
	558.4	5	653.3	39	297.9	37	297.9	38
	98.2	14	106.6	30	85.4	29	85.4	31
	83.8	15	86.8	29	86.8	30	70.1	29
	961.6	3	961.6	40	961.6	41	961.6	41
	187.8	11	175.5	34	163.5	33	159.7	33
	.	.	0.0	2	0.0	1	0.4	3
	2842.7	1	2842.7	42	1910.7	42	1910.7	42
	39.0	26	29.1	16	19.8	13	18.1	13
	5.5	39	4.1	7	4.1	9	5.0	8
	7.6	37	7.9	9	8.0	11	7.8	10
	449.1	6	.	.	197.4	35	197.4	36
	10.4	35	3.1	6	1.4	5	5.6	9
	5.5	40	1.1	4	2.0	7	3.0	6
	41.4	24	41.8	20	29.7	17	29.7	19
	31.8	28	27.6	14	28.5	15	23.6	14
	49.0	21	50.3	23	.	.	.	.
	674.3	4	640.4	38	643.9	40	643.9	40
	40.5	25	42.8	22	39.7	22	23.6	15
	21.0	34	25.7	11	28.3	14	26.4	17
	31.4	29	33.3	18	35.6	20	24.4	16
가	27.4	32	27.5	13	30.4	18	35.1	21
	37.8	27	53.5	24	48.1	24	48.1	25
	.	.	0.0	1	0.0	2	0.0	1

IMD 가  
2000 가  
가

3-1.

( '98)(10 \$ )  
( )



:

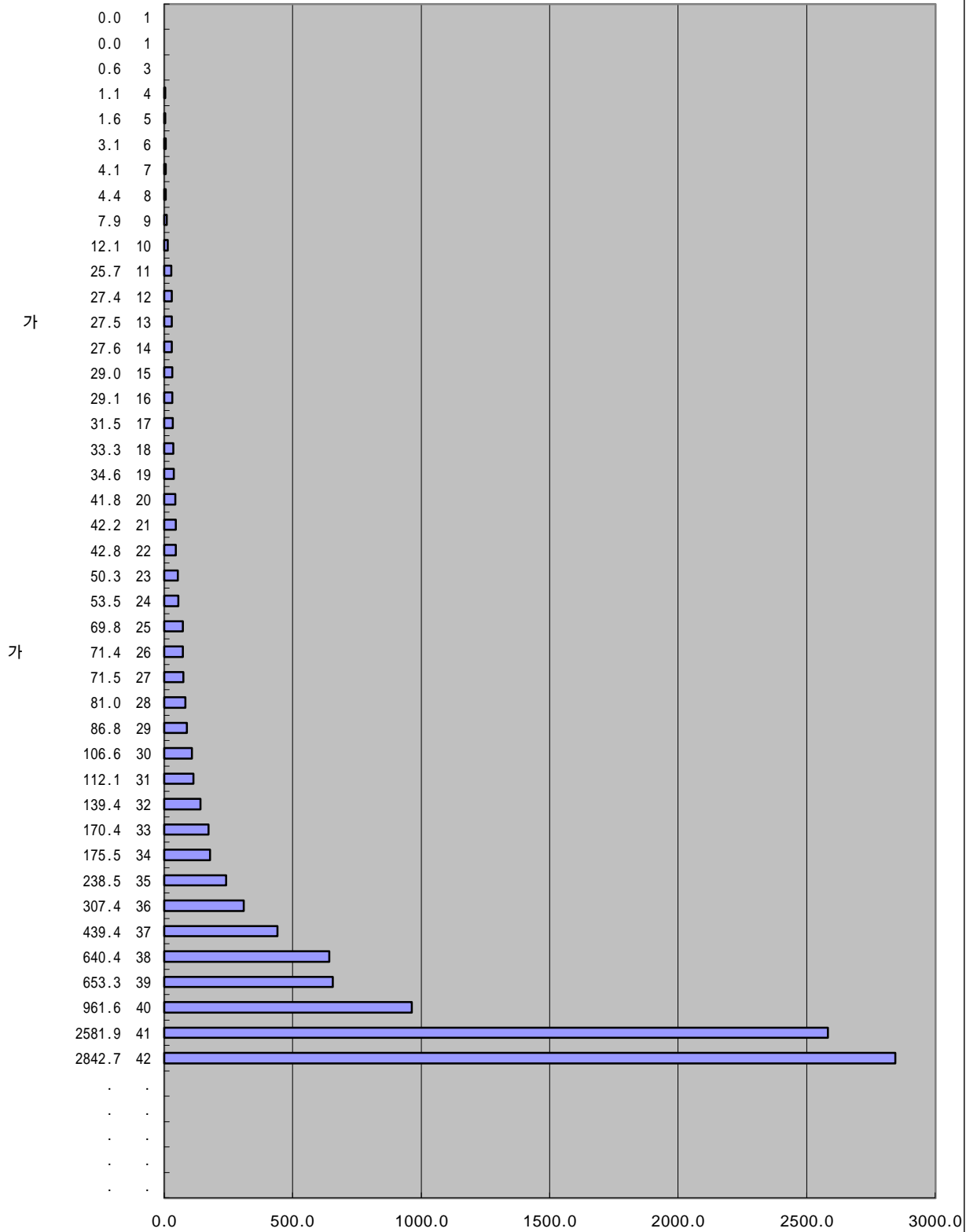
(IMD), 2000

(2000.4.19)

IMD 가  
1999 가  
가

3-1.

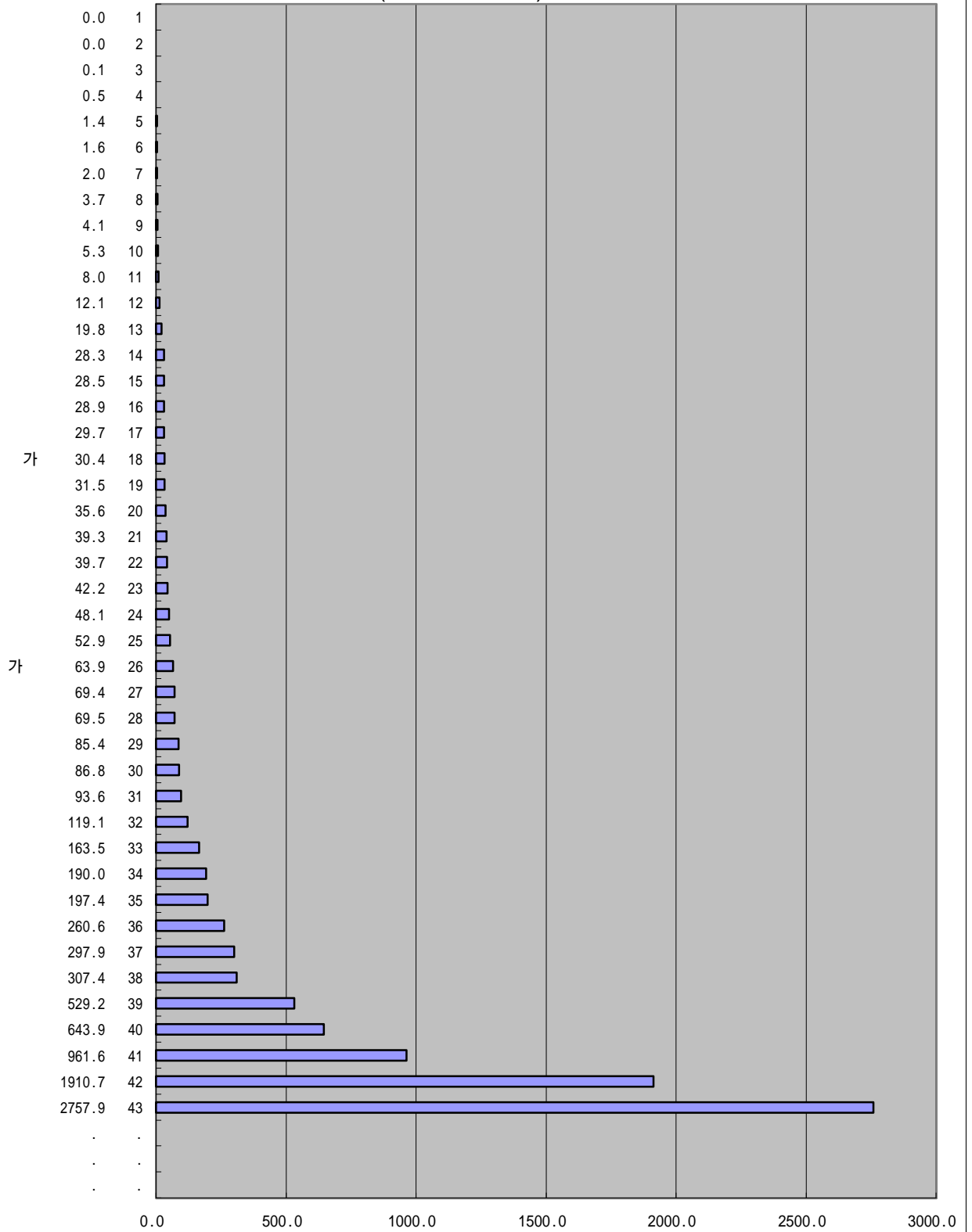
( '97)( \$ )  
( )



# IMD 가 1998 가 가

## 3-1.

( '96)(10 \$ )  
( )



IMD 가

1997

가

가

3-1.

( '95)(10 \$ )  
( )

