

# IMD                      가

## 1997-2000

### 가                      가

	2000 2-31.		1999 2-31.		1998 2-29.		1997 2-29.	
	('98)(10 \$)		('97)(10 \$)		('96)(10 \$)		('95)(10 \$)	
	22.05	28	21.86	27	20.31	24	1.05	37
	18.72	34	14.24	34	10.81	35	-0.56	45
	169.52	6	127.95	8	118.63	8	10.66	8
	24.30	26	23.70	25	23.08	23	0.62	42
	34.09	21	29.54	21	32.86	19	2.51	23
	20.07	32	19.85	29	17.14	29	1.56	32
	31.76	22	25.96	23	23.39	22	4.14	19
	228.79	4	137.73	6	170.99	3	8.94	10
	13.39	40	12.71	36	5.85	43	2.02	28
	.	.	.	.	.	.	.	.
	41.01	20	45.20	17	42.08	17	5.80	14
	60.78	16	86.84	12	71.54	13	6.96	11
	875.03	1	720.79	1	644.72	1	60.23	1
	17.98	36	13.70	35	8.28	38	0.90	39
	164.09	7	143.12	5	100.77	11	10.27	9
	156.80	8	126.28	9	108.34	9	4.86	16
	53.79	18	43.86	18	42.01	18	14.27	6
	60.10	17	56.54	16	59.61	15	2.60	21
	118.93	10	110.59	11	104.98	10	6.25	13
	2.36	45	2.35	45	.	.	.	.
가	85.86	14	78.06	14	66.76	14	6.91	12
	45.47	19	36.07	19	28.92	20	1.32	36
	0.43	46	0.20	46	0.26	45	0.00	44
	23.87	27	18.31	30	13.95	31	2.32	25
	326.81	2	274.37	2	344.70	2	22.03	4
	25.39	25	21.59	28	19.89	25	1.36	35
	9.17	43	11.88	37	7.41	40	1.53	33
	105.40	11	78.51	13	74.99	12	4.88	15
	13.23	41	11.21	39	8.46	37	1.75	30
	61.12	15	62.15	15	58.56	16	4.35	18
	30.27	24	33.16	20	18.03	28	0.60	43
	261.12	3	217.34	3	169.11	4	35.85	2
	13.46	39	6.76	43	5.30	44	2.57	22
	30.48	23	25.06	24	18.69	27	1.70	31
	141.77	9	137.11	7	129.15	6	10.79	7
	14.20	38	11.75	38	12.81	33	2.50	24
	19.98	33	23.10	26	19.59	26	2.07	27
	7.44	44	6.43	44	6.22	42	0.89	40
	21.72	29	16.46	31	13.72	32	3.66	20
	21.13	30	8.59	42	6.75	41	0.65	41
	179.19	5	174.15	4	168.43	5	23.74	3
	15.52	37	9.04	41	9.40	36	1.04	38
	10.13	42	9.93	40	8.24	39	1.48	34
	20.48	31	14.83	33	12.49	34	1.78	29
가	18.26	35	15.88	32	15.01	30	4.52	17
	104.98	12	126.26	10	123.86	7	14.31	5
	96.16	13	26.87	22	24.27	21	2.10	26

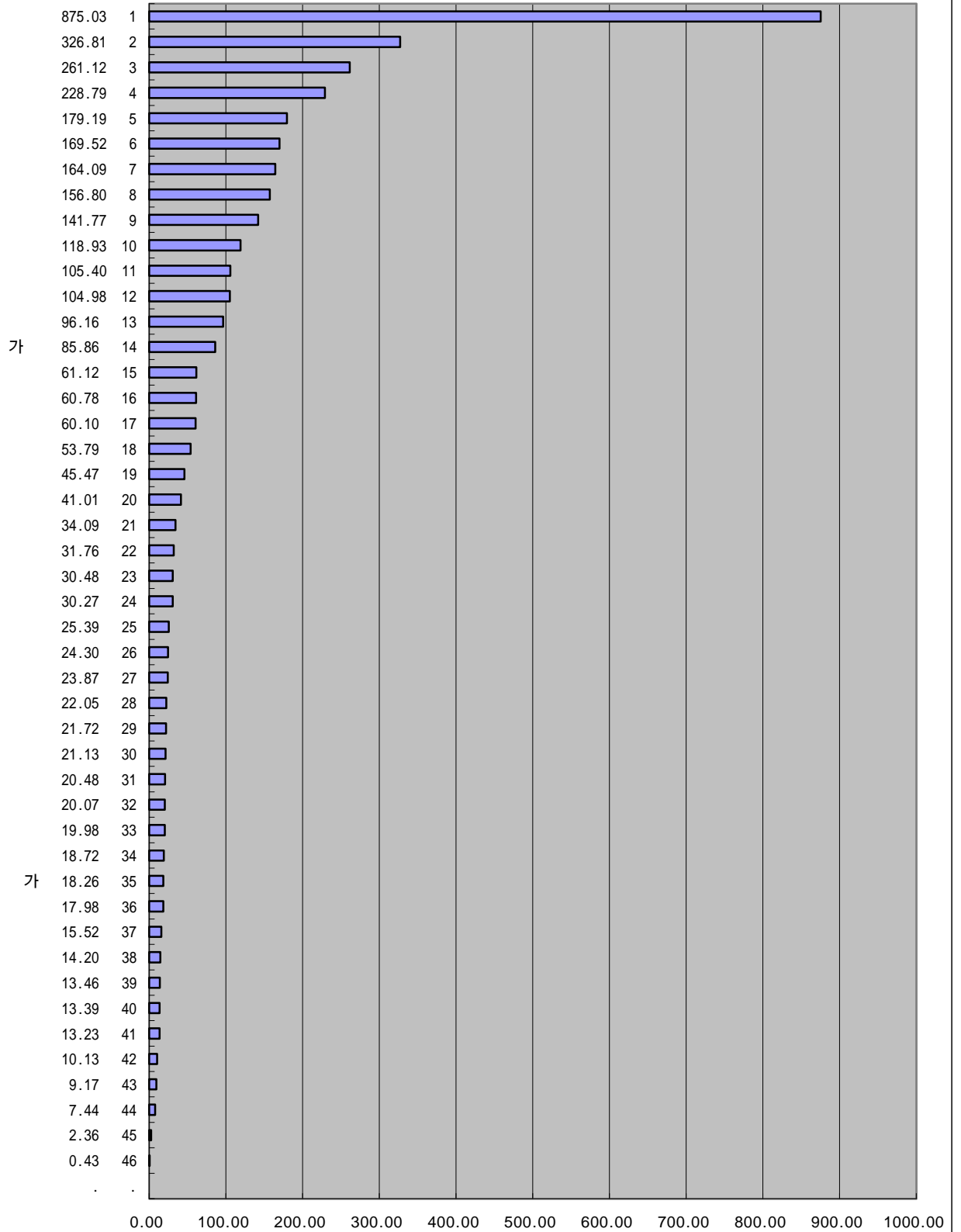
IMD 가

2000  
가

가

2-31.

('98)(10 \$)



:

(IMD), 2000

(2000.4.19)

IMD

가

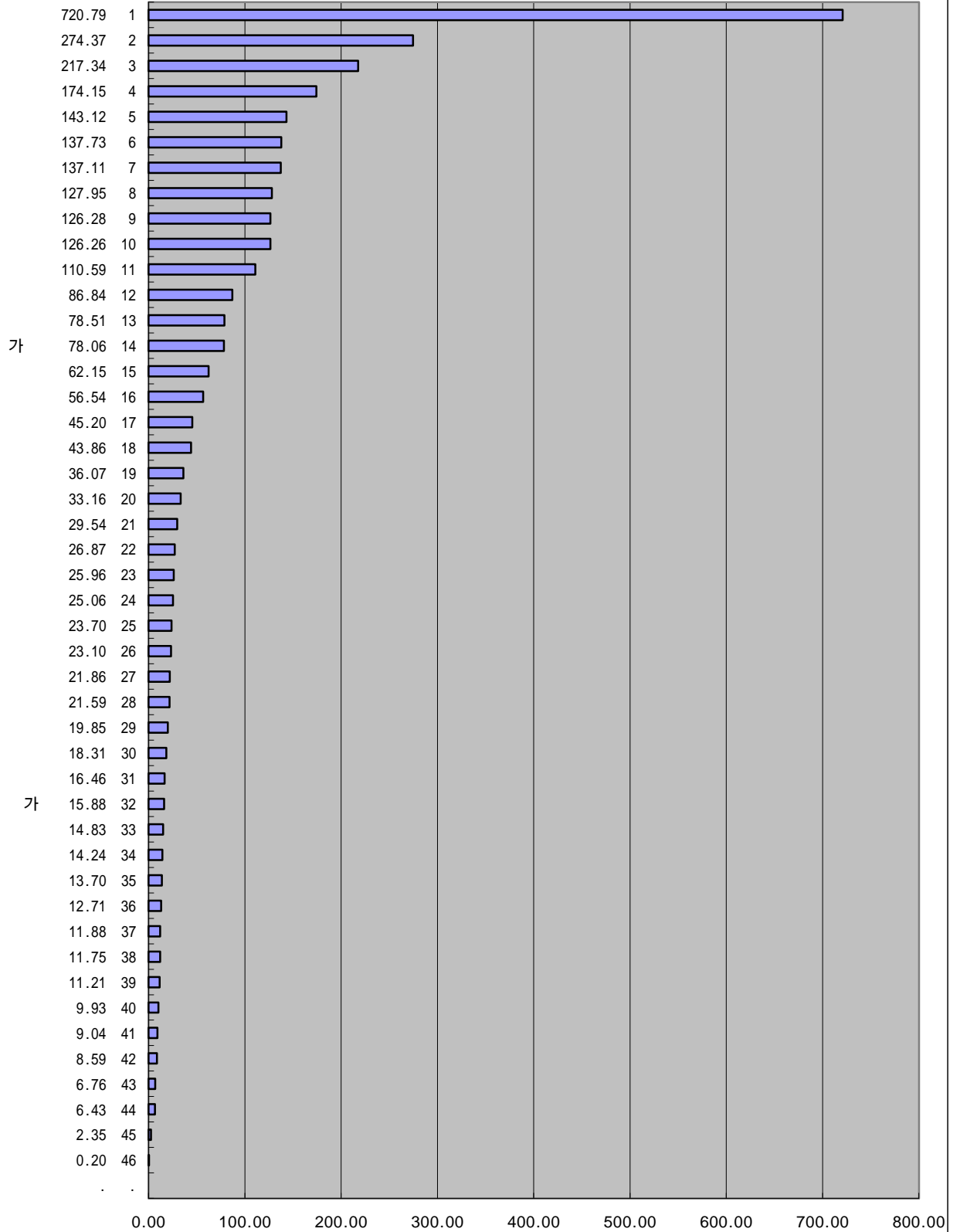
1999

가

가

2-31.

('97)(10 \$)



:

(IMD), 1999

(1999.4.21)

IMD 가

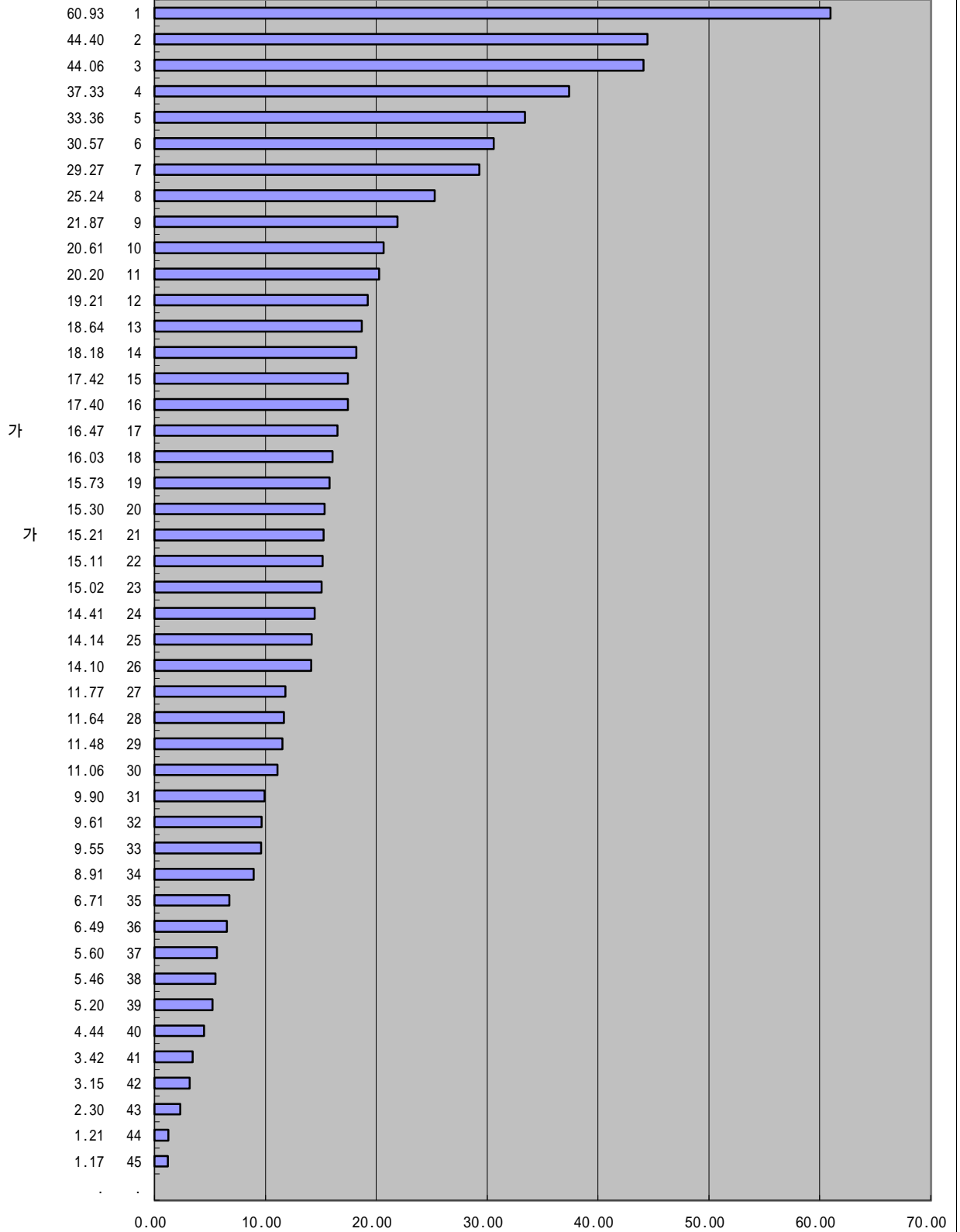
1998

가 가

2-29.

가

('96)(%, )



IMD 가

1997

가

가

2-29.

('95)(10 \$)

