

# IMD 가

## 1997-2000

### 가 가

	2000		1999		1998		1997	
	1-8(a).		1-8(a).		1-26(a).		1-26(a).	
	GDP		GDP		GDP		GDP	
	('00)(%, )	( )	('99)(%, )	( )	('98)(%, )	( )	('97)(%, )	( )
	3.7	15	3.2	22	3.4	28	2.5	35
	3.2	22	1.9	37	1.9	43	2.2	38
	2.7	34	2.7	24	3.7	22	2.7	32
	3.3	21	2.3	31	4.7	16	3.0	28
	3.5	17	2.0	36	3.7	23	2.9	30
	6.3	4	4.7	5	6.2	9	6.3	9
	1.5	43	2.0	35	2.8	36	2.9	29
	2.3	38	2.2	32	3.0	33	2.2	37
	.	.	-7.0	47	2.0	42	2.0	41
	4.3	9	3.4	18	3.7	21	3.1	27
	2.7	32	4.5	7	8.5	2	8.0	2
	3.3	20	3.6	14	5.4	12	5.0	16
	3.1	23	1.5	39	2.7	37	2.2	40
	2.2	39	2.7	25	3.2	29	3.2	26
	2.8	31	2.3	30	2.8	35	2.2	36
	3.0	28	2.8	23	3.0	32	3.5	21
	3.0	25	2.2	33	2.6	38	2.2	39
	1.8	42	1.6	38	1.7	45	0.8	46
	3.7	16	3.4	19	3.6	26	2.7	33
	3.8	14	3.5	16	.	.	.	.
가	4.0	13	4.5	8	8.0	4	7.5	6
	3.0	24	3.4	17	5.8	10	5.0	15
	2.5	35	4.3	9	4.6	17	3.6	20
	7.5	1	6.7	3	7.3	5	6.2	10
	2.7	33	0.8	43	2.2	40	3.3	25
	2.9	30	2.4	27	3.0	31	1.4	44
	4.2	10	1.3	41	2.5	39	4.0	19
	2.4	37	2.1	34	2.1	41	1.2	45
	6.0	5	7.0	2	7.0	6	6.6	7
	2.0	41	-2.4	46	8.2	3	7.7	4
	1.4	44	0.2	45	1.7	44	1.6	43
	6.5	2	7.0	1	9.7	1	10.0	1
	1.4	45	1.3	40	3.1	30	4.5	17
	5.3	6	4.1	10	5.4	11	5.8	11
	3.0	27	2.4	28	3.5	27	3.3	24
	.	.	3.9	13	4.5	18	4.0	18
	2.5	36	1.0	42	6.6	7	8.0	3
	4.6	8	4.0	12	5.3	15	5.7	12
	5.2	7	5.1	4	5.4	13	5.1	14
	3.4	19	3.3	20	3.7	24	2.9	31
	3.0	29	2.4	29	2.9	34	2.5	34
	4.2	11	3.2	21	3.9	19	3.5	22
	4.0	12	4.0	11	6.5	8	7.5	5
가	6.5	3	0.5	44	-1.6	46	6.3	8
	3.5	18	4.6	6	3.9	20	1.7	42
	3.0	26	2.4	26	3.6	25	3.3	23
	2.0	40	3.5	15	5.3	14	5.5	13

IMD 가

2000

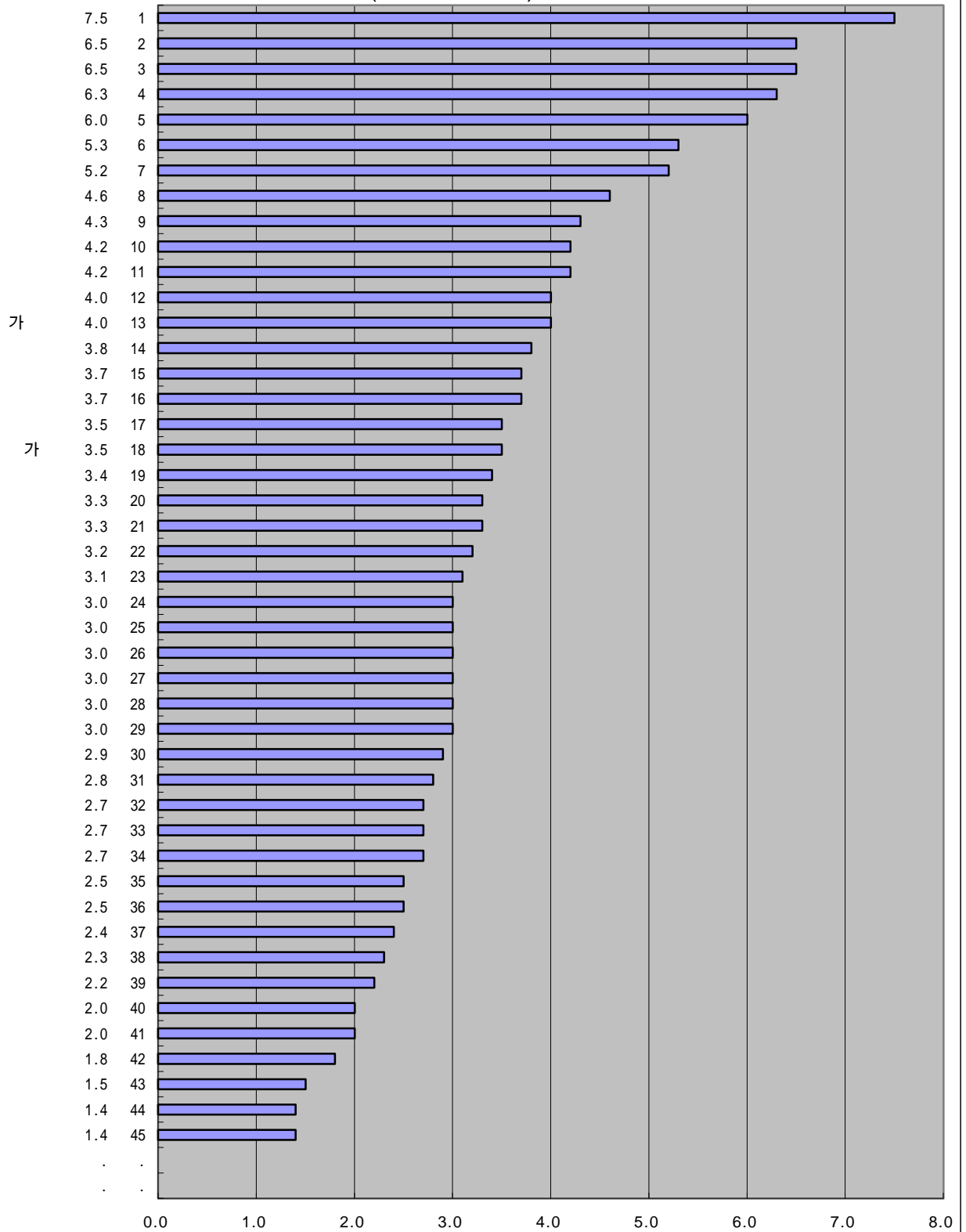
가

가

1-8(a).

GDP

( '00)(%, )  
( )



IMD 가

1999

가

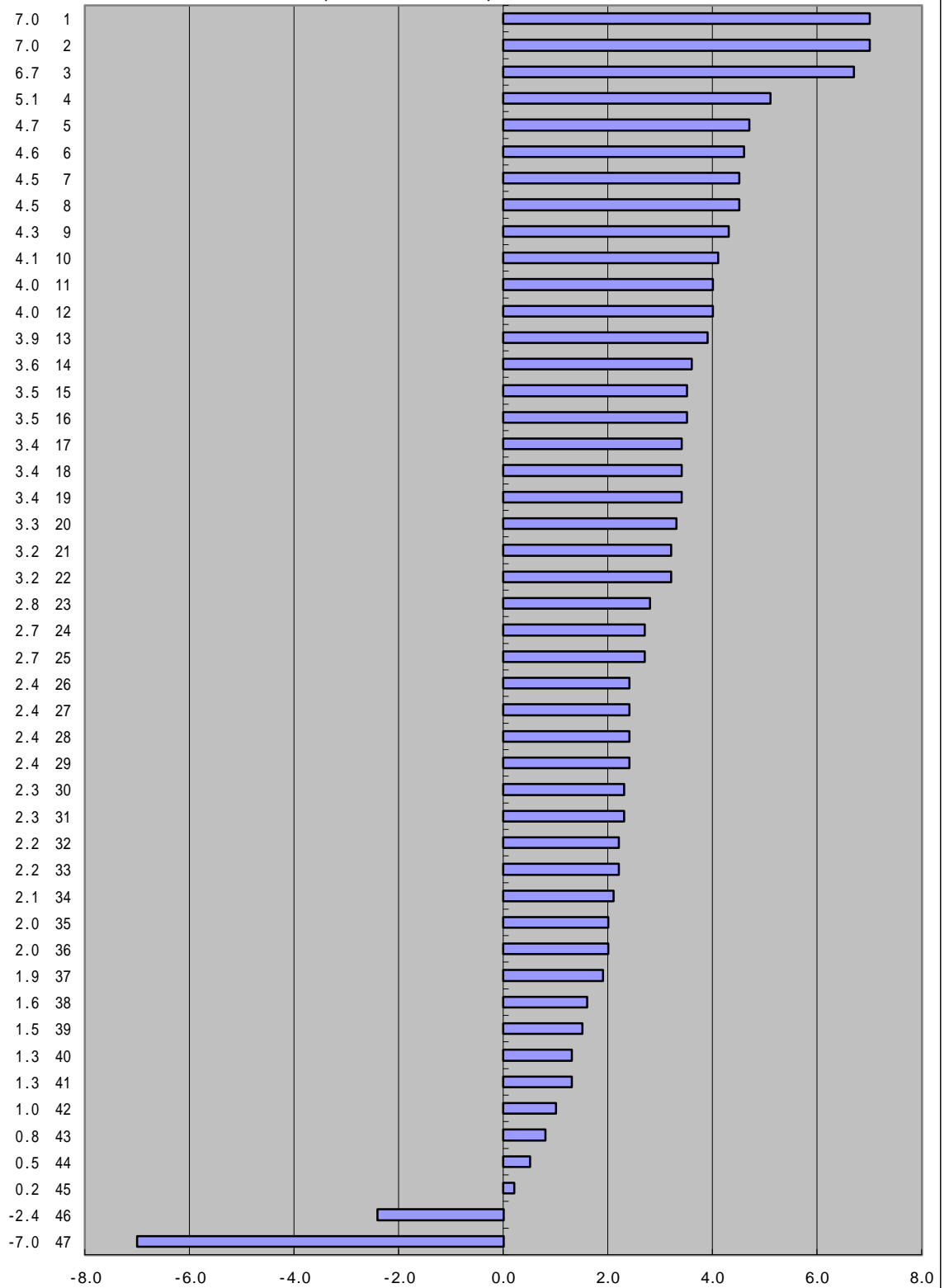
가

1-8(a).

- GDP

( '99)(%, )  
( ( ) )

가  
가



:

(IMD), 1999

(1999.4.21)

IMD 가

1998

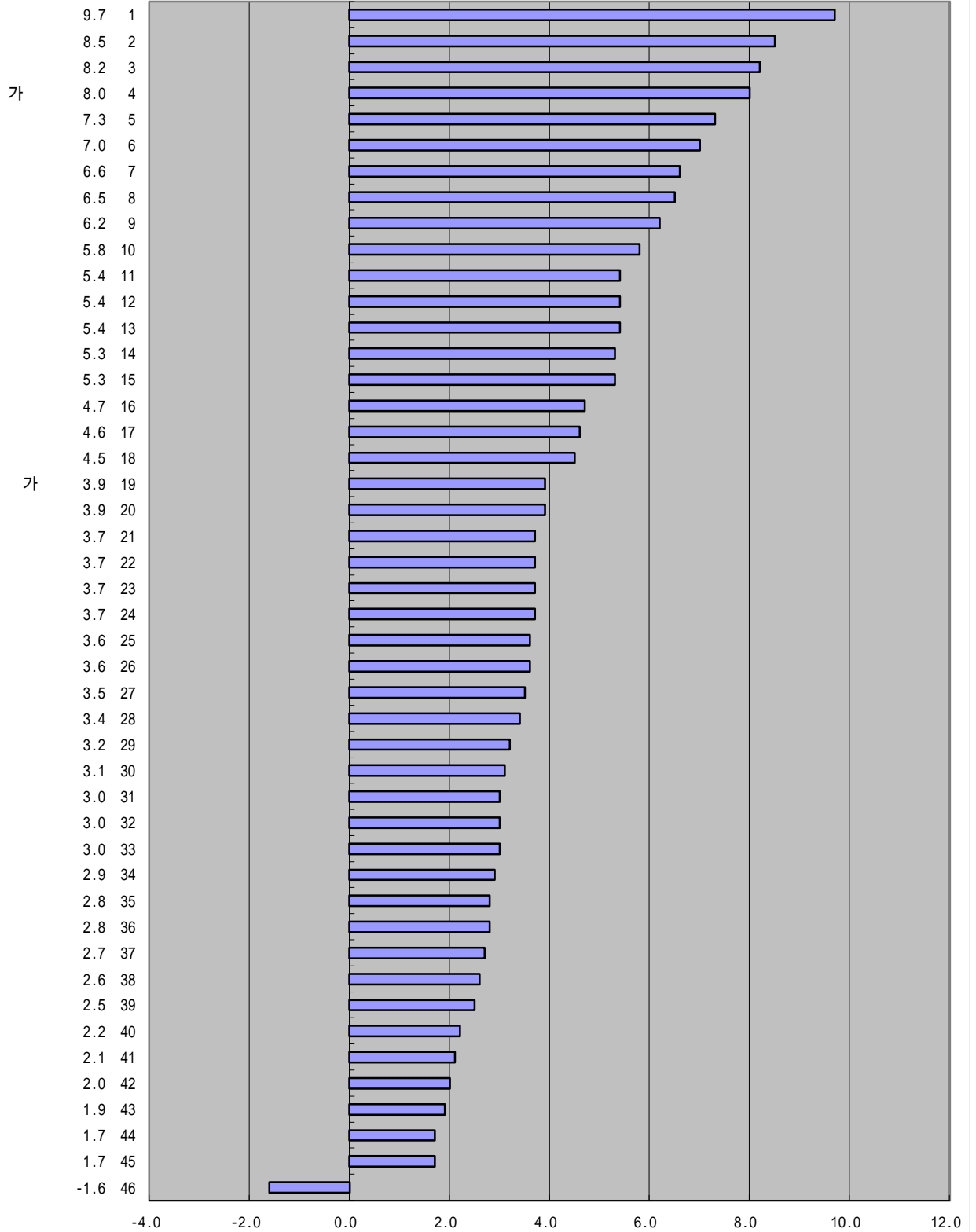
가

가

1-26(a).

GDP

( '98)(%, )  
( ( ) )



IMD 가

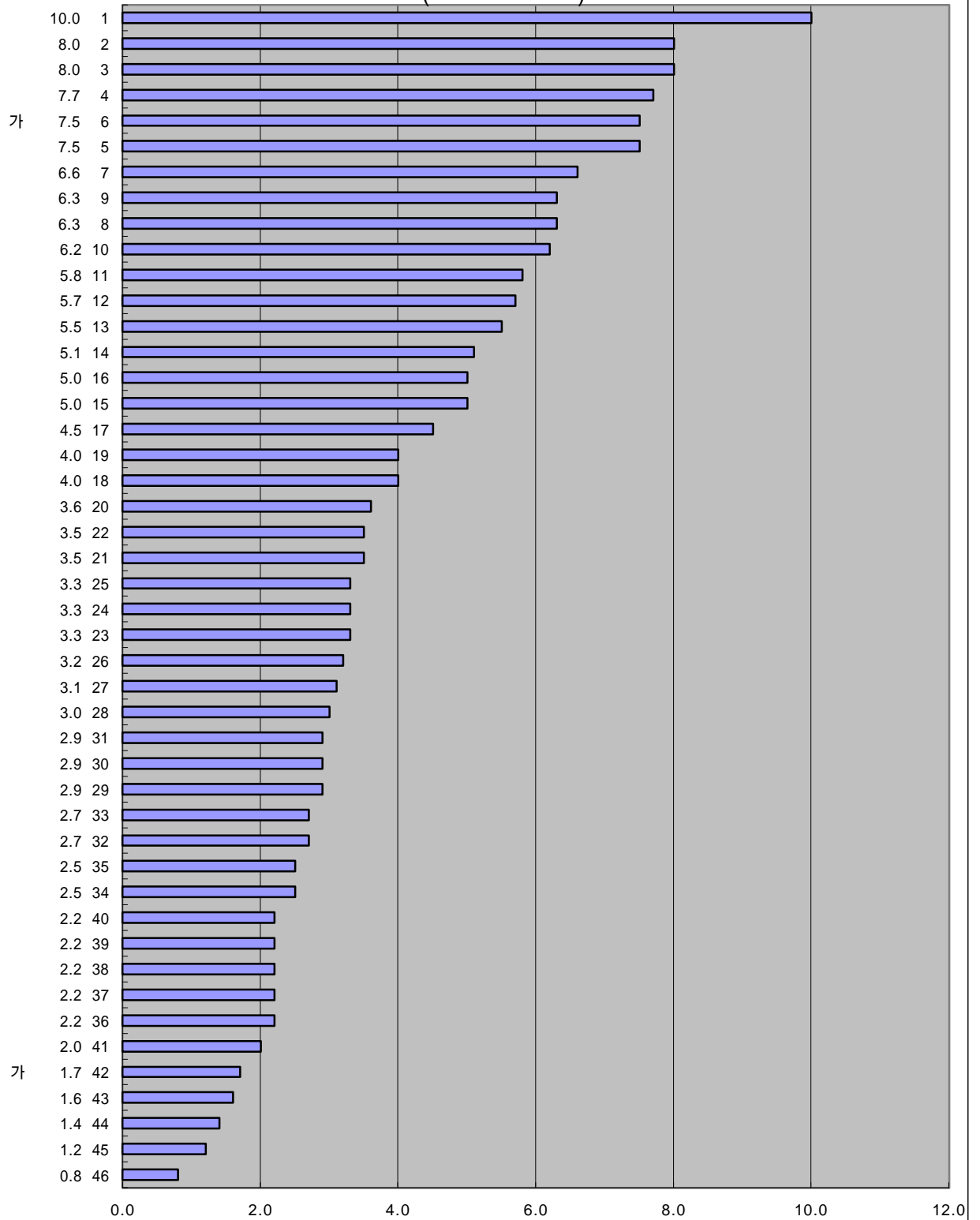
1997

가 가

1-26(a).

GDP 가

( '97)(%, GDP )  
( )



:

(IMD), 1997

(1997.3.25)