

IMD 가  
2001-2003 가

	2003		2002		2001	
	2-1-04.		2-1-04.		2-1-04.	
	('01)(%, GDP )		('00)(%, GDP )		('99)(%, GDP )	
	38.4	L21	43.4	36	44.8	36
	28.5	L17	25.7	24	14.5	17
	18.6	L11	18.7	18	18.6	19
	8.4	L05	11.4	11	19.8	22
	0.3	L01	-	-	-	-
	36.3	L20	31.3	29	31.3	29
	11.8	L08	12.4	12	11.0	10
	23.2	L13	22.3	22	25.6	25
	9.8	L06	8.5	7	5.6	7
	26.1	L15	24.6	23	24.3	24
	18.1	L10	-	-	-	-
	27.3	L16	30.8	28	36.7	32
	-	-	41.9	34	13.4	14
	33.1	L18	39.1	31	39.6	33
	98.4	L27	103.0	48	115.4	49
	60.4	L24	59.2	43	52.3	40
	-	-	-	-	-	-
	0.6	L03	0.6	4	0.6	4
	73.4	L26	73.5	45	73.5	44
	4.7	L04	4.6	6	4.5	6
	-	-	-	-	-	-
	55.0	L22	57.8	42	70.6	43
	20.0	L12	19.2	19	14.4	16
	16.6	L09	14.7	15	13.0	13
	68.5	L25	29.2	27	29.6	27
	24.3	L14	19.6	21	19.7	21
	56.6	L23	46.4	38	46.6	37
	34.4	L19	32.3	30	32.9	31
	0.5	L02	0.5	3	0.5	3
	9.9	L07	9.9	9	9.8	8
	112.3	S24	86.6	46	92.1	47
	49.3	S19	51.0	39	42.5	35
	12.7	S07	19.6	20	21.1	23
	18.6	S09	18.1	17	19.0	20
	46.1	S18	56.8	41	56.2	42
	-	-	-	-	-	-
	3.0	S03	-	-	-	-
	101.2	S23	3.2	5	3.6	5
	27.3	S12	-	-	-	-
	25.7	S11	106.6	49	107.0	48
	-	-	28.5	26	32.6	30
	29.6	S13	26.3	25	26.3	26
	12.4	S06	-	-	-	-
	99.4	S22	16.3	16	13.7	15
	9.3	S04	13.7	13	17.6	18
가	36.8	S14	86.9	47	88.5	46
	0.2	S02	9.2	8	11.9	12
	53.8	S20	45.2	37	51.4	39
	22.3	S10	0.2	2	0.4	2
	83.3	S21	53.9	40	53.8	41
	-	-	-	-	-	-
	15.8	S08	71.6	44	79.1	45
	11.8	S05	-	-	-	-
	41.7	S17	13.8	14	11.7	11
	-	-	10.9	10	10.3	9
	-	-	43.3	35	41.2	34
가	38.8	S16	41.0	32	30.7	28
	38.0	S15	41.4	33	50.9	38
	0.0	S01	0.0	1	0.0	1

:

(IMD),

(2001, 2002, 2003)

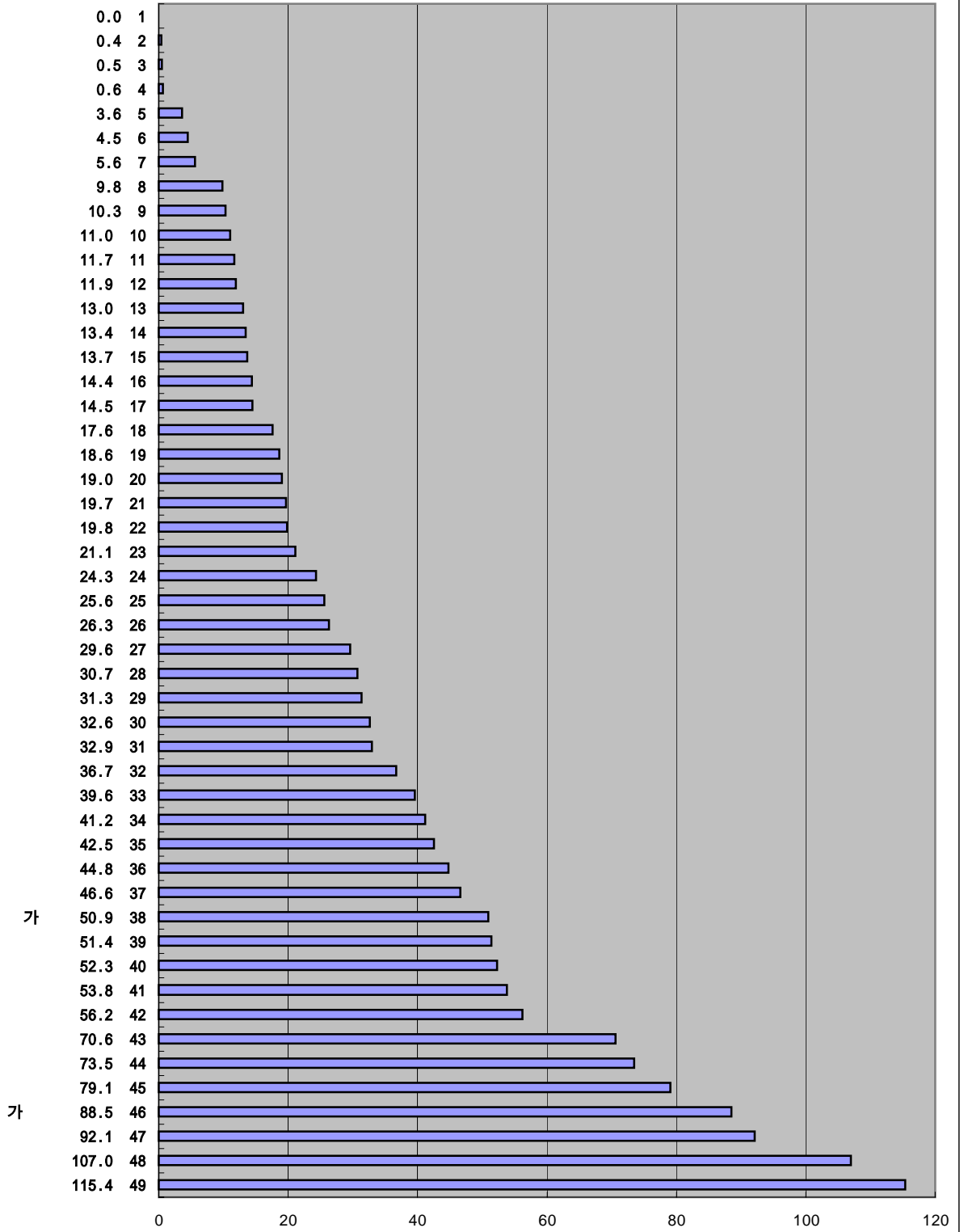
IMD 가

2001

가 가

2-1-04.

('99)(%, GDP )



가

가

:

(IMD),

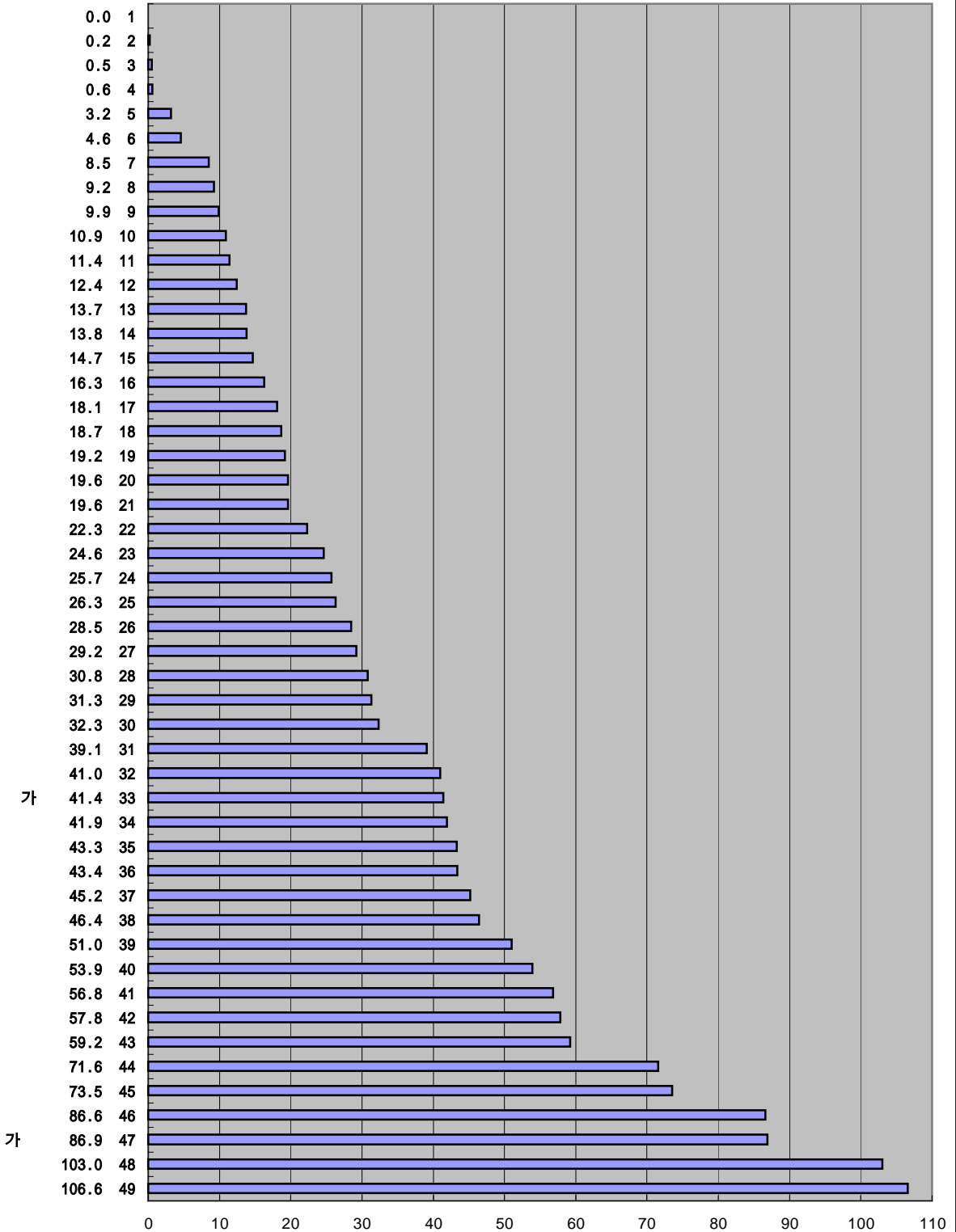
(2001, 2002, 2003)

IMD 가

2002  
가 가

2-1-04.

('00)(%, GDP )



:

(IMD),

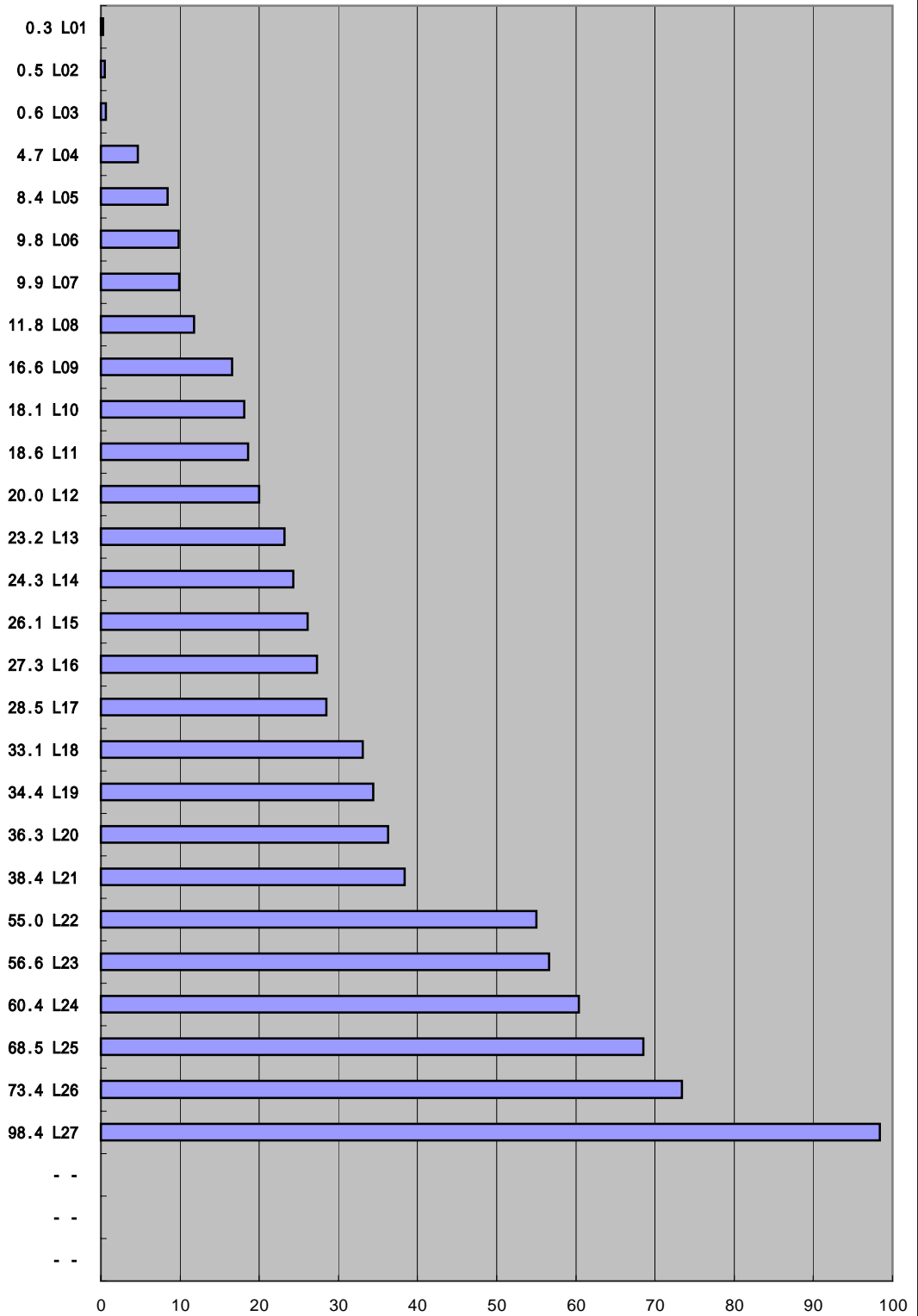
(2001, 2002, 2003)

IMD 가

2003  
가 가

2-1-04.

('01)(%, GDP )



:

(IMD),

(2001, 2002, 2003)

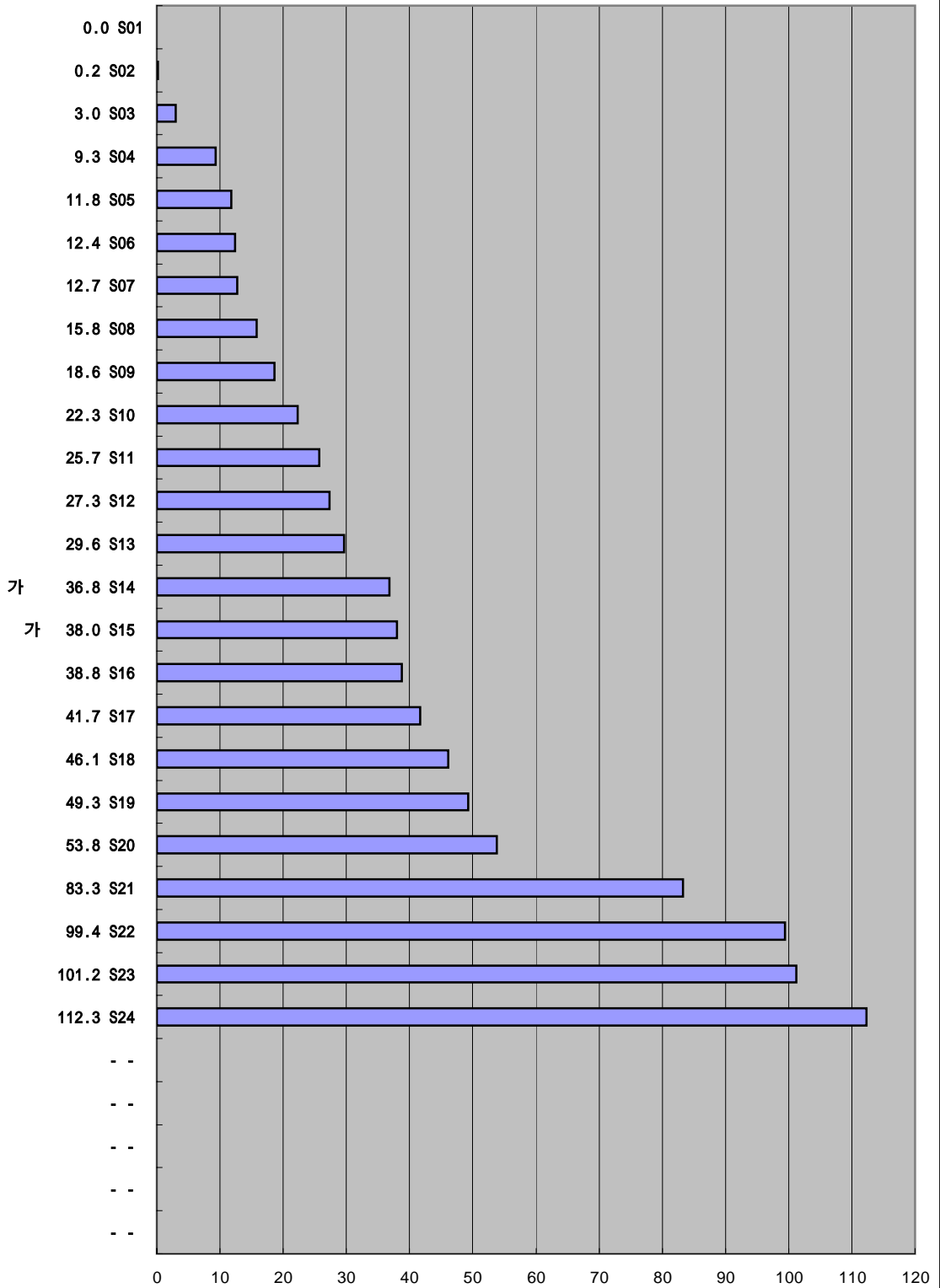
IMD 가

2003

가 가

2-1-04.

('01)(%, GDP )



:

(IMD),

(2001, 2002, 2003)